

GSM/3G Antenna

MODEL: TH-80C



1.. GENERAL DESCRIPTION

Model No	P/N
TH-80C	TH80C-SMA90M

Below is a table summarizing the antenna design specification.

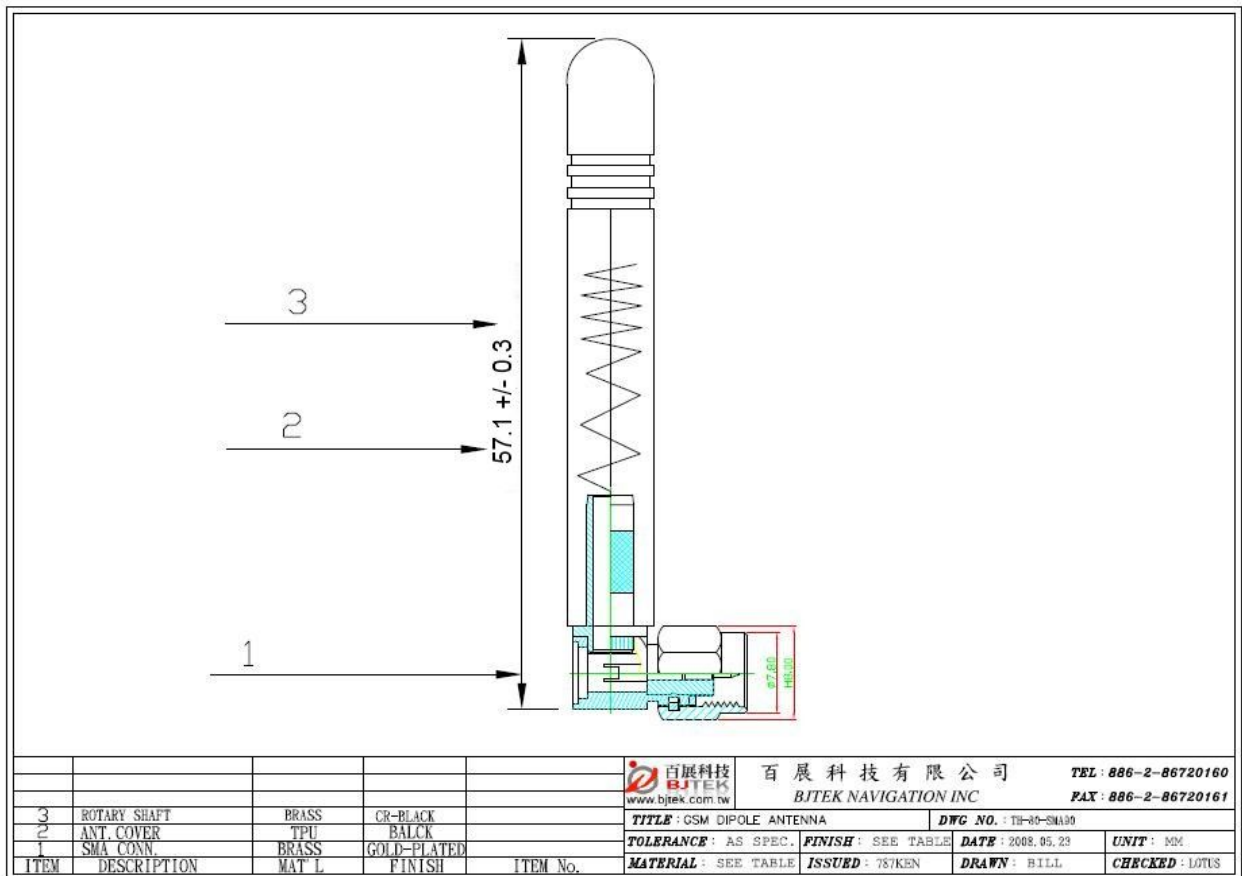
1.1 Electrical Properties

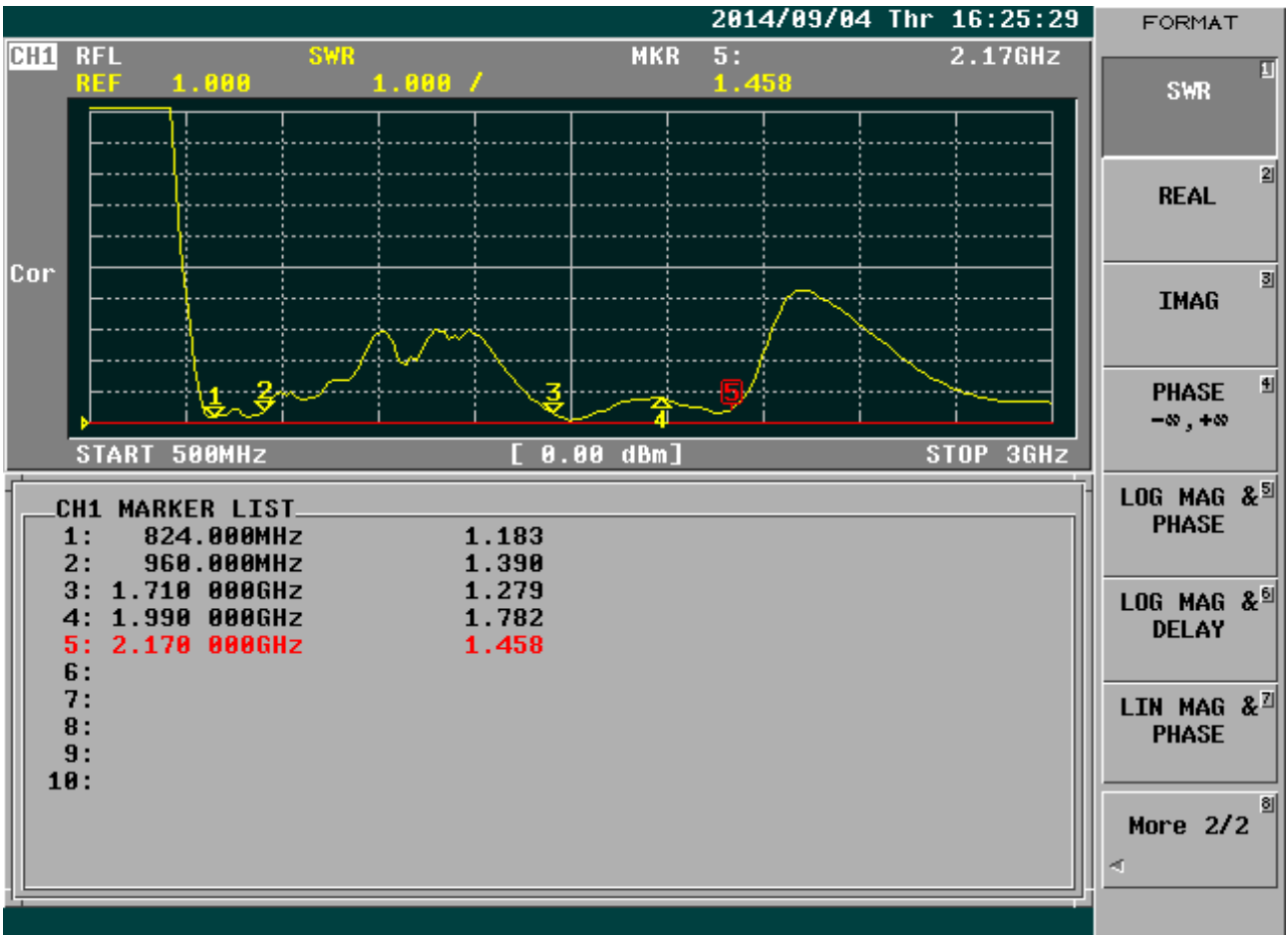
Parameter	Description
Frequency Band	824~960/1710~2170MHz
Nominal Impedance	50 ohm
Polarization	Vertical
Electrical Wave	1 / 4 λ
Admitted Power radiation	1W
V.S.W.R	3.0:1
Antenna Average Gain	0 dB
Note: Gain includes the cable loss	

1.2 Mechanical Properties

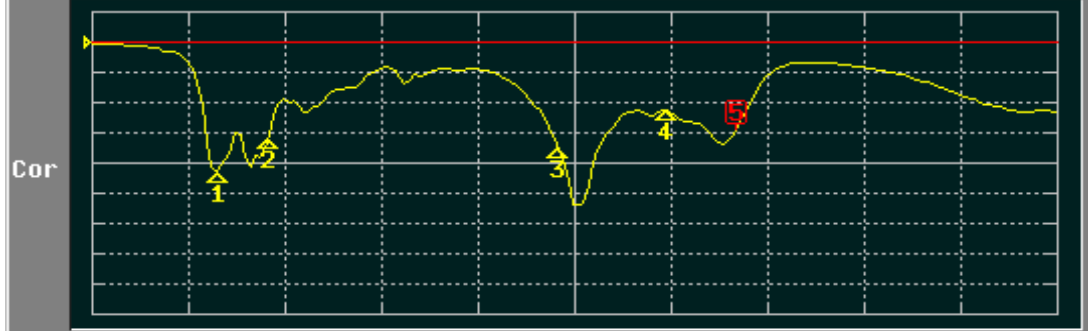
Parameter	Description
Antenna Type	External Antenna
Material	TPU
Touch Type	Screw Type

Connector Type	SMA 90° (Male)
Antenna Dimensions	57.1mm±0.3
Antenna Color	Black
Operating Temperature Range	-30°C~+70°C
Storage Temperature Range	-35°C~+80°C





CH1 RFL LOG MAG MKR 5: 2.17GHz
 REF 0.000 dB 5.000 dB/ -14.516 dB



START 500MHz [0.00 dBm] STOP 3GHz

CH1 MARKER LIST

1:	824.000MHz	-21.580 dB
2:	960.000MHz	-15.827 dB
3:	1.710 000GHz	-17.413 dB
4:	1.990 000GHz	-11.358 dB
5:	2.170 000GHz	-14.510 dB
6:		
7:		
8:		
9:		
10:		

SYSTEM

SYSTEM DRIVE

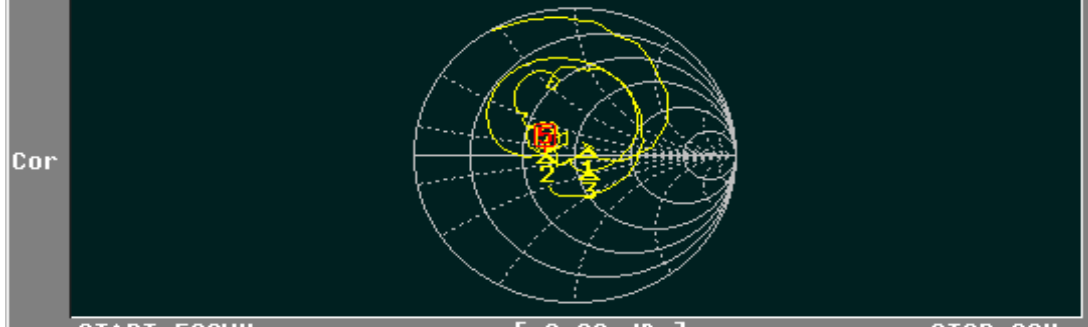
SET CLOCK

LIMIT MENU

MEAS SUB MENU

SERVICE MENU

CH1 RFL SMITH(R+jX) MKR 5: 2.17GHz
 FS 1.000 34.783 Ω 1.336 Ω



START 500MHz [0.00 dBm] STOP 3GHz

CH1 MARKER LIST

1:	824.000MHz	57.420 Ω	6.089 Ω	1.176nH
2:	960.000MHz	36.061 Ω	816.717mΩ	135.401pH
3:	1.710 000GHz	57.768 Ω	-13.050 Ω	7.131pF
4:	1.990 000GHz	32.842 Ω	15.219 Ω	1.217nH
5:	2.170 000GHz	34.783 Ω	1.336 Ω	98.052pH
6:				
7:				
8:				
9:				
10:				

FORMAT

LOG MAG

PHASE

DELAY

SMITH (R+jX)

SMITH (G+jB)

POLAR

LIN MAG

More 1/2