

# 900Mhz Gooseneck Antenna

MODEL: TH-900



## 1. GENERAL DESCRIPTION

Model No	P/N
TH-900	TH900-N(M)

Below is a table summarizing the antenna design specification.

### 1.1 Electrical Properties

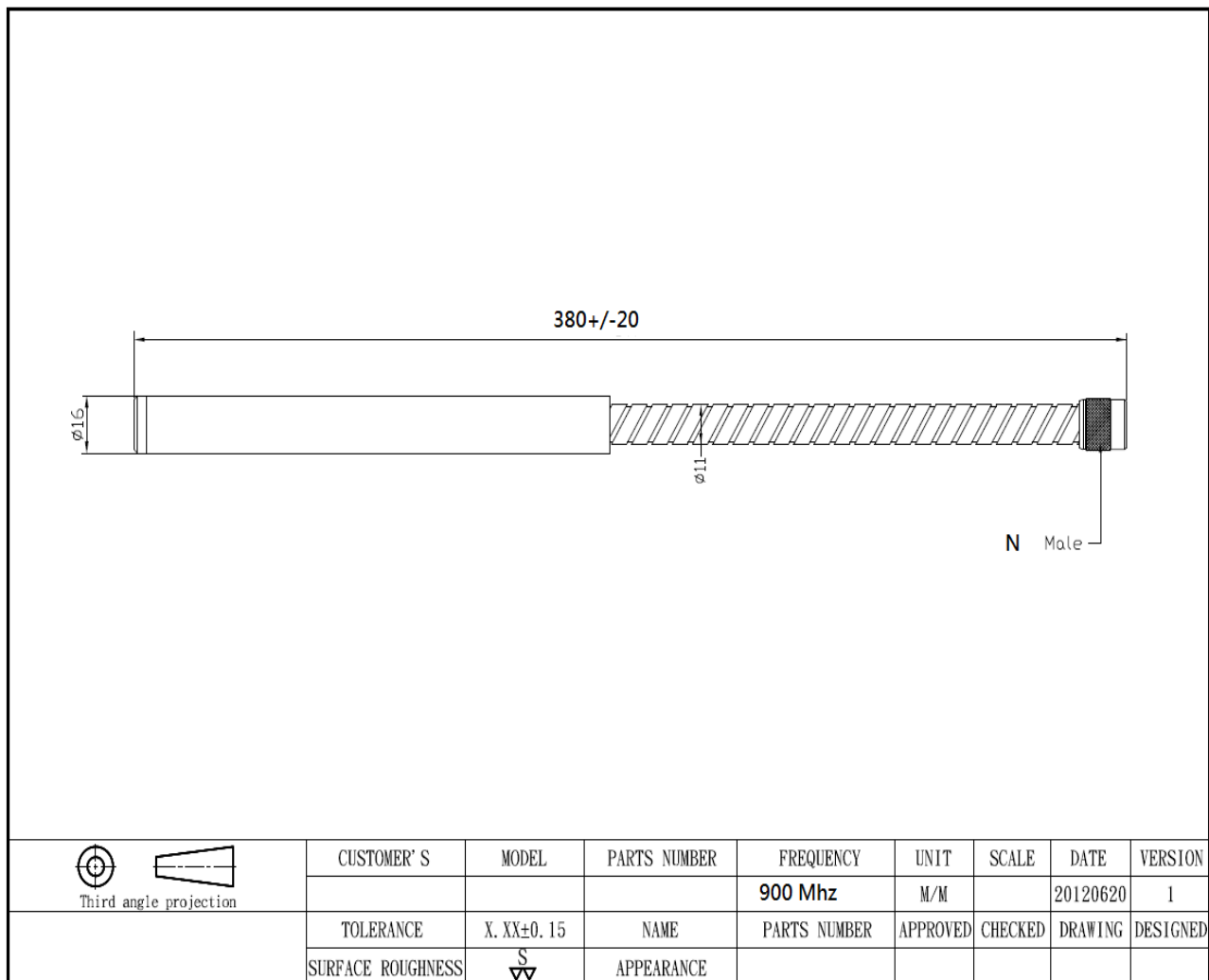
Parameter	Description
Frequency Band	800~960 MHz
Nominal Impedance	50 ohm
Polarization	Vertical
Electrical Wave	Dipole
Return Loss	Please See Data-1
V.S.W.R	2.0 : 1
Gain	3db

### 1.2 Mechanical Properties

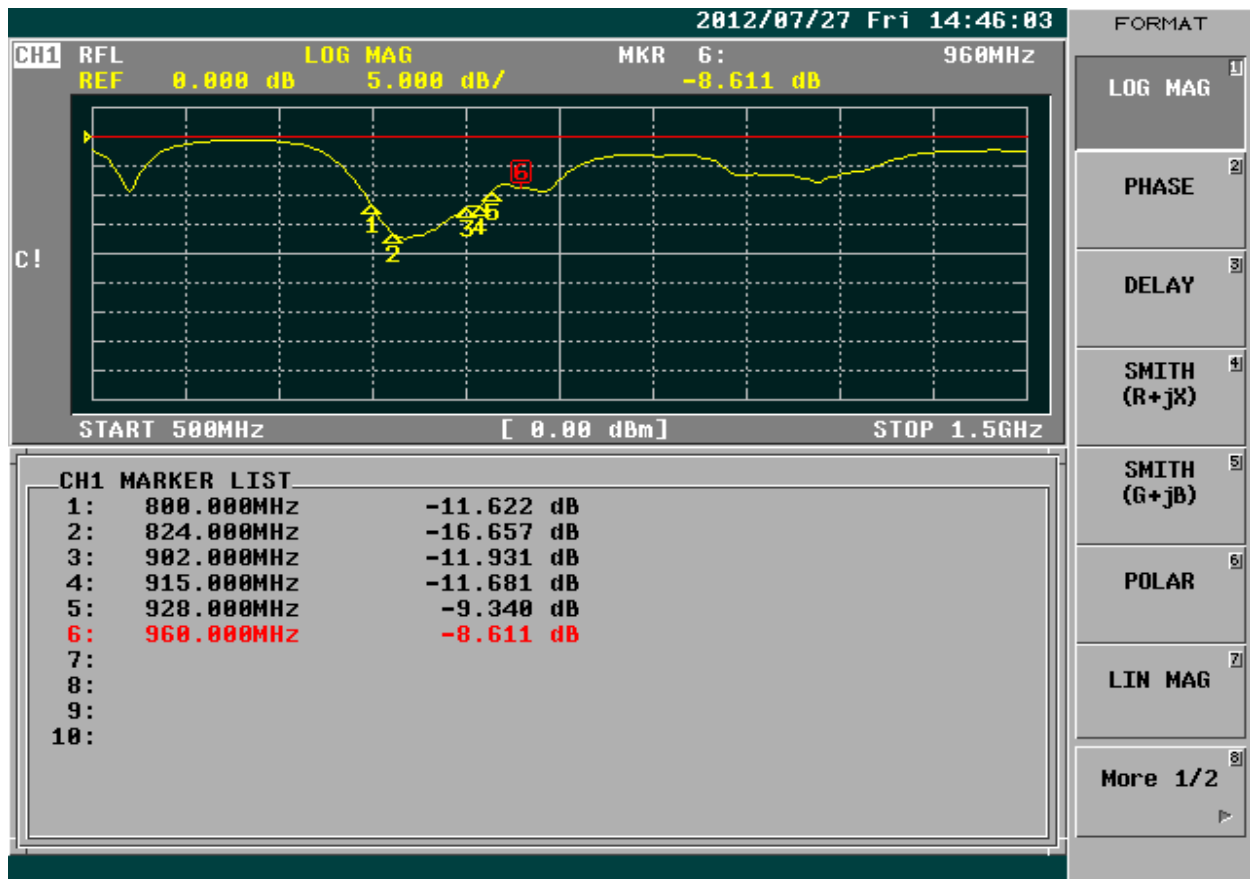
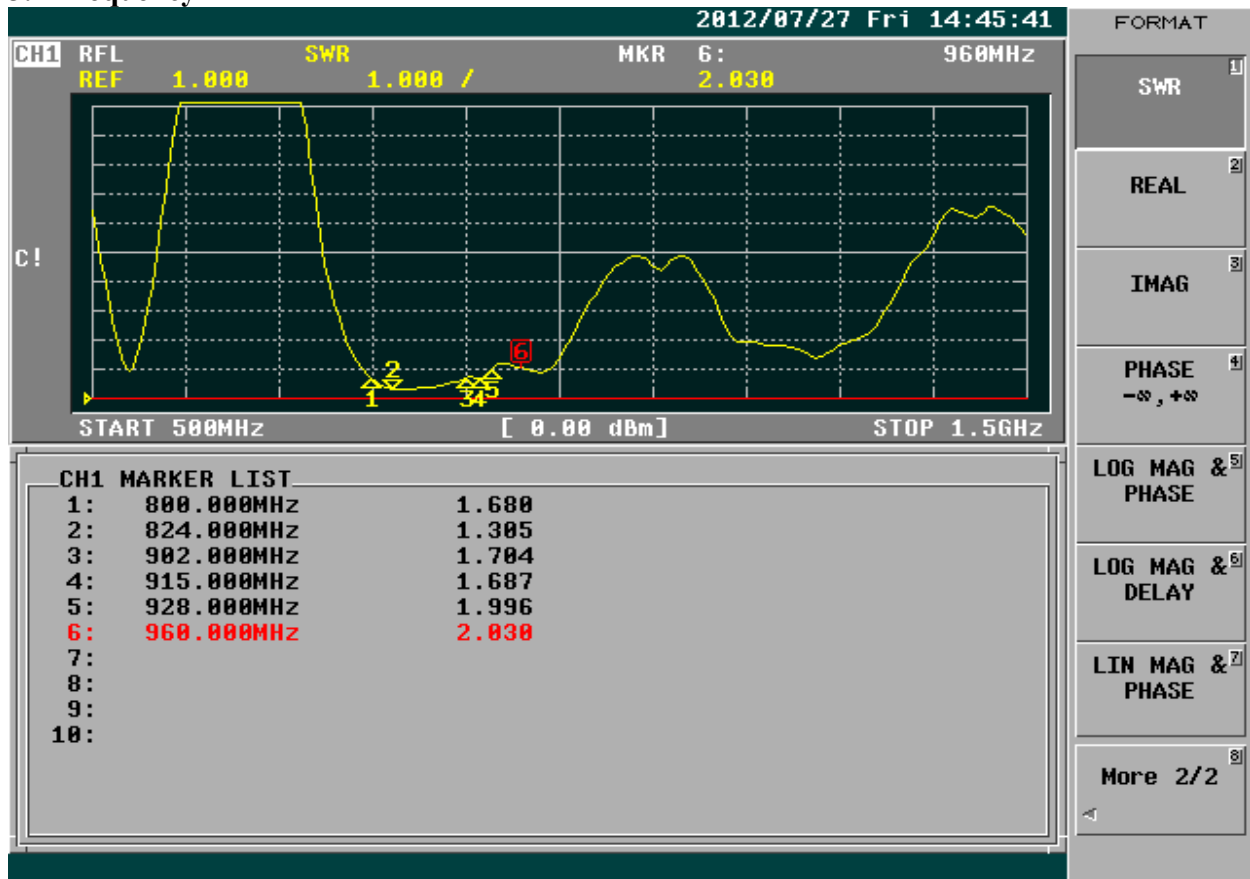
Parameter	Description
Antenna Type	External Antenna
Touch Type	Screw Type
Connector Type	N 180°(Male)

Antenna Dimensions	380mm ±20
Antenna Color	Black
Operating Temperature Range	-30°C~+80°C
Storage Temperature Range	-40°C~+90°C

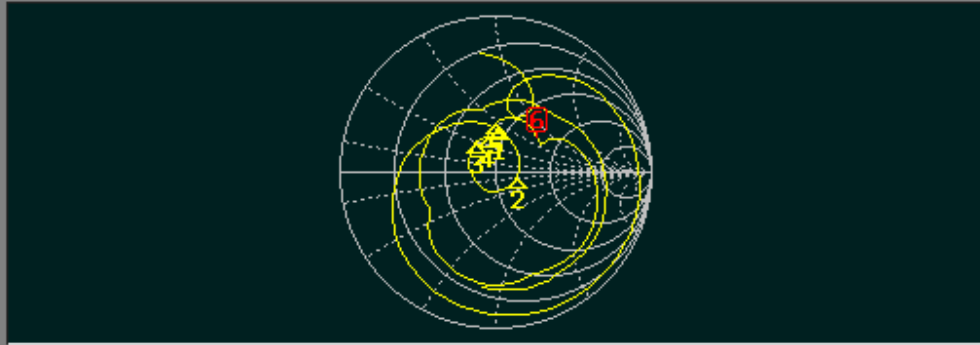
## 2. Appearance



### 3. Frequency



CH1 RFL SMITH(R+jX) MKR 6: 960MHz  
 FS 1.000 73.591 Ω 37.878 Ω



START 500MHz [ 0.00 dBm] STOP 1.5GHz

CH1 MARKER LIST

1:	800.000MHz	43.917 Ω	26.143 Ω	5.201nH
2:	824.000MHz	64.854 Ω	-5.083 Ω	37.996pF
3:	902.000MHz	36.867 Ω	15.001 Ω	2.647nH
4:	915.000MHz	40.843 Ω	19.550 Ω	3.400nH
5:	928.000MHz	41.309 Ω	28.719 Ω	4.925nH
6:	960.000MHz	73.591 Ω	37.878 Ω	6.279nH
7:				
8:				
9:				
10:				

FORMAT

LOG MAG

PHASE

DELAY

SMITH  
(R+jX)

SMITH  
(G+jB)

POLAR

LIN MAG

More 1/2