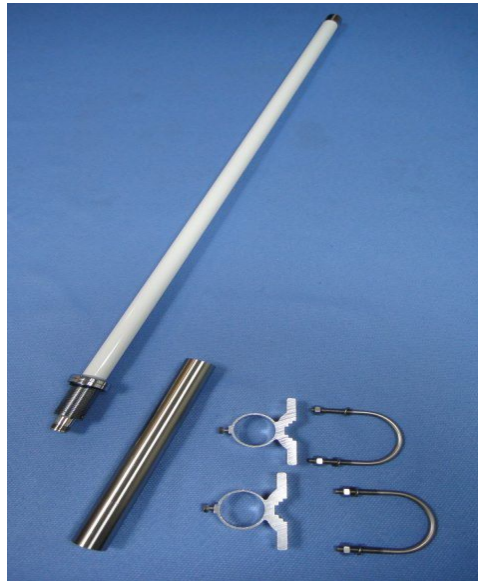


# OUTSIDE GSM ANTENNA

## MODEL: GSM-100B

Fiber Glass Antenna 850/900/1800/1900/2170Mhz



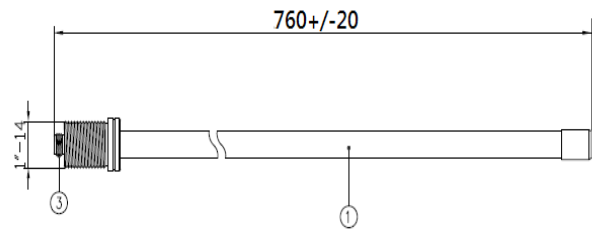
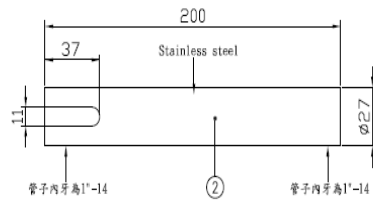
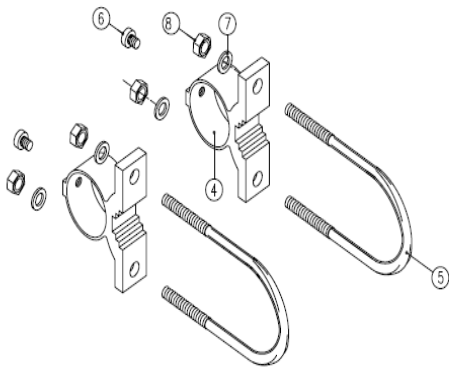
### Specifications:


Frequency range:	850/900/1800/1900/2170Mhz
Gain:	7~9dBi
V.S.W.R:	<2.0
Impedence:	50 ohm
Connector:	N Type Female
Dimension:	760mm +/-10 x OD20mm
Weight:	620g
Polarization :	vertical
Power handling :	50W
Colour :	white
Rated wind velocity :	60m/s
Working Temperature :	-40~80°C
Lightning Protection :	Direct Ground
Touch Type :	1"-14 threaded (M) 200mm SUS TUBE 1"-14 threaded (F) X2 & SUS U-Circlip x 2

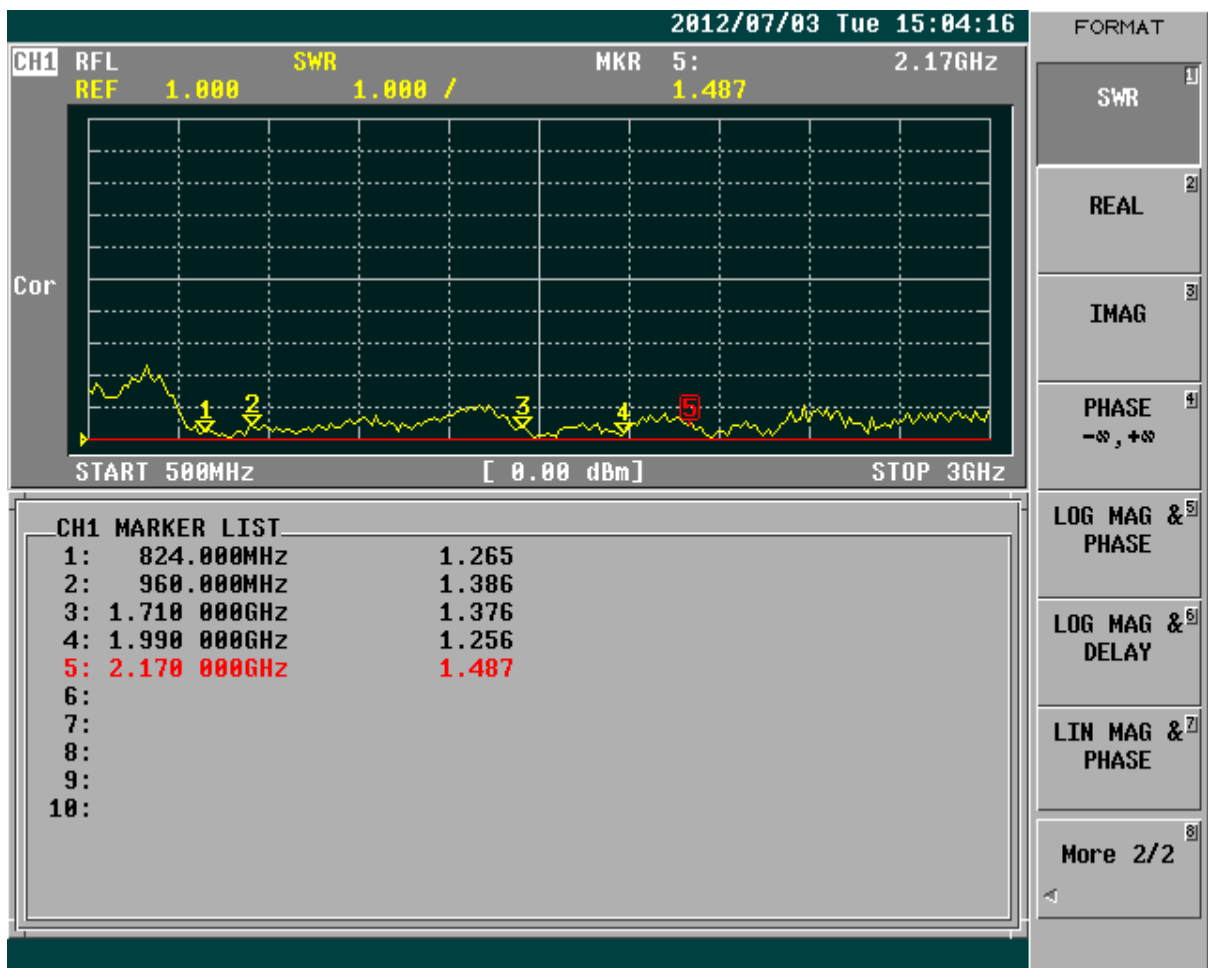
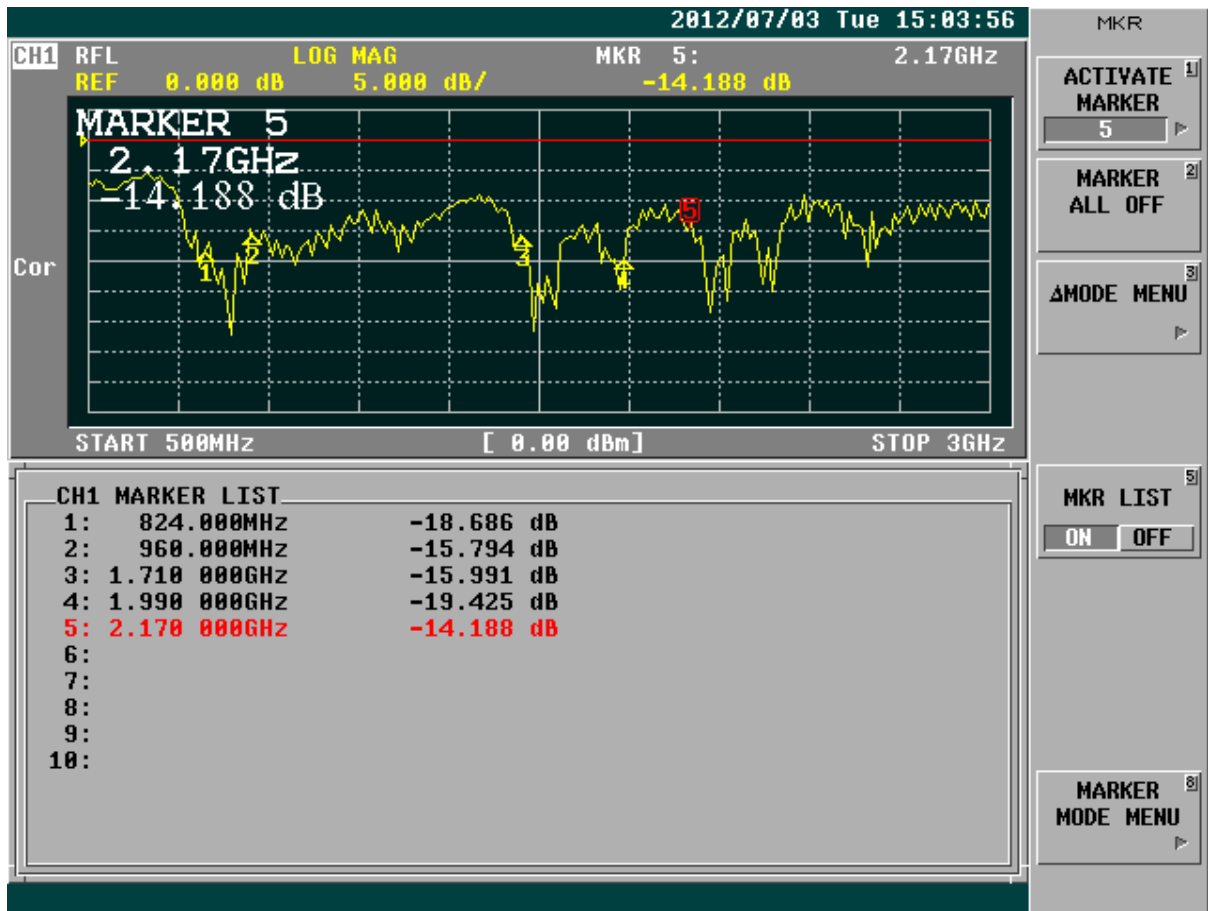
\* This specification is subject to change without prior notice



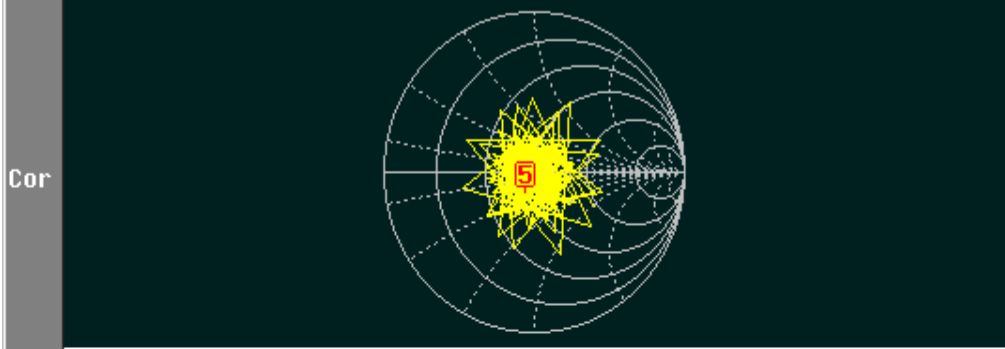
NO.	NAME	Q, TY
01	Body	01
02	Copper tube(Stainless steel)	01
03	N (Female)	01
04	Clip retaining	02
05	U-Circlip	02
06	Hexagonal nut	02
07	Round iron washer	04
08	Hexagonal nut	04



 Third angle projection	CUSTOMER'S	MODEL	PARTS NUMBER	FREQUENCY	UNIT	SCALE	DATE	VERSION
					800/1900/2100MHz	M/M		20120704
	TOLERANCE	X. XX±0.15	NAME	PARTS NUMBER	APPROVED	CHECKED	DRAWING	DESIGNED
	SURFACE ROUGHNESS	$\sqrt{S}$	APPEARANCE					



CH1 RFL SMITH(R+jX) MKR 5: 2.17GHz  
 FS 1.000 42.510 Ω -9.458 Ω



START 500MHz [ 0.00 dBm] STOP 3GHz

CH1 MARKER LIST

1:	824.000MHz	40.447 Ω	-1.912 Ω	100.998pF
2:	960.000MHz	60.217 Ω	-7.938 Ω	20.883pF
3:	1.710 000GHz	42.928 Ω	4.858 Ω	452.186pH
4:	1.990 000GHz	46.625 Ω	5.758 Ω	460.539pH
5:	2.170 000GHz	42.510 Ω	-9.458 Ω	7.753pF
6:				
7:				
8:				
9:				
10:				

FORMAT

LOG MAG

PHASE

DELAY

SMITH (R+jX)

SMITH (G+jB)

POLAR

LIN MAG

More 1/2