

# Yagi UHF ANTENNA

**MODEL: YGA-450**



## 1.1 Electrical Properties

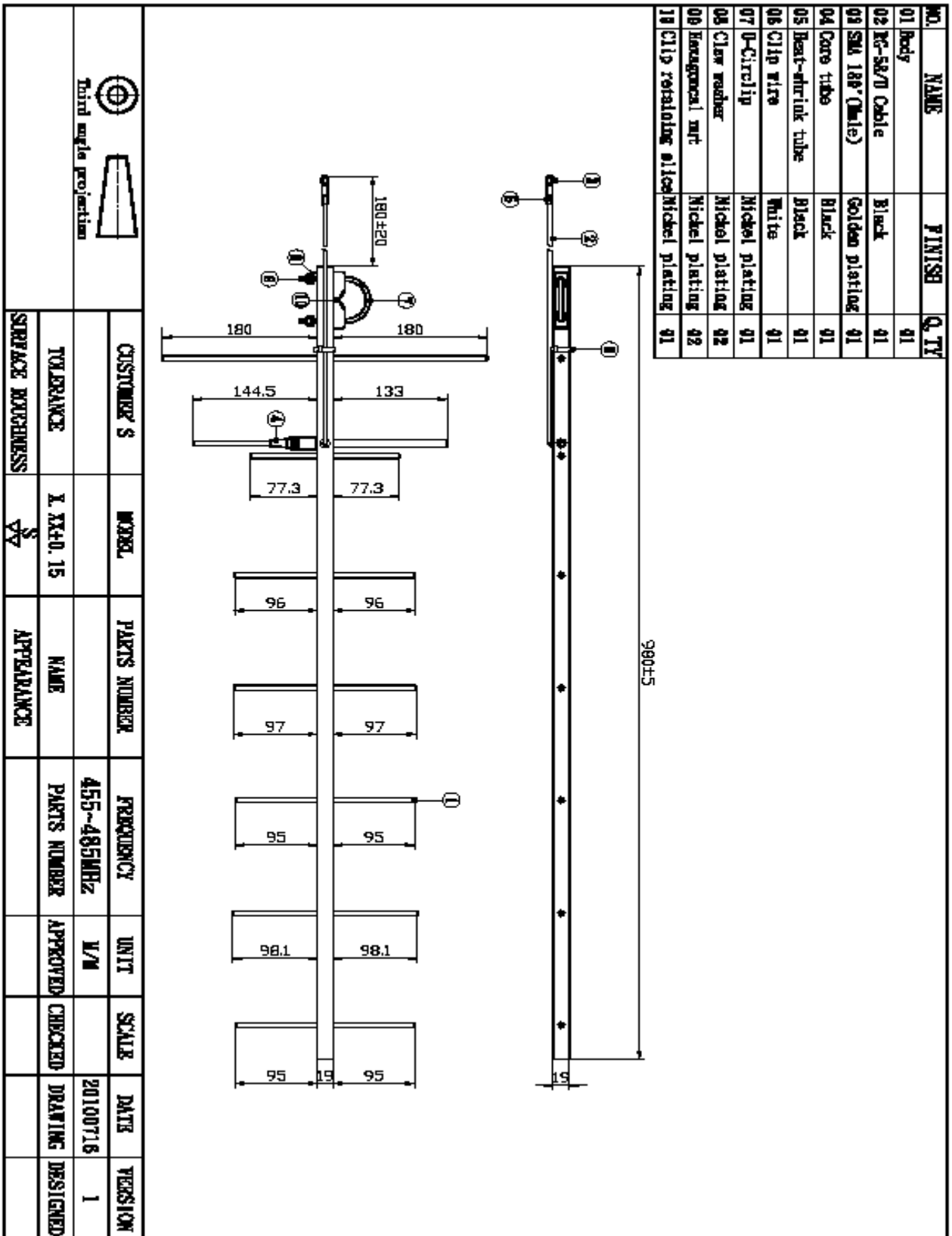
Parameter	Description
Frequency Band	455~485MHz
Nominal Impedance	50 ohm
Polarization	Vertical
V.S.W.R	2.0:1
Antenna Gain	6~8 dBi
Note: Gain includes the cable loss	

## 1.2 Mechanical Properties

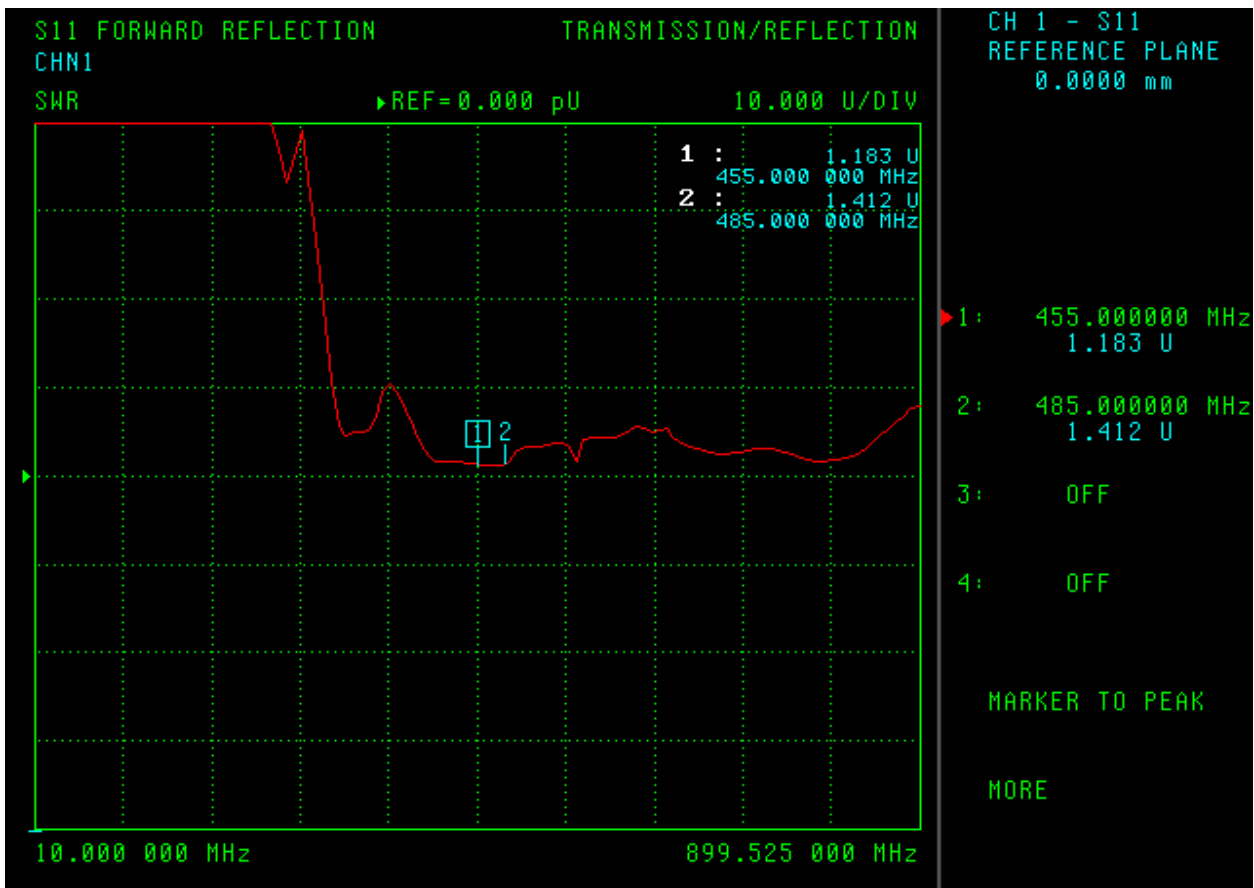
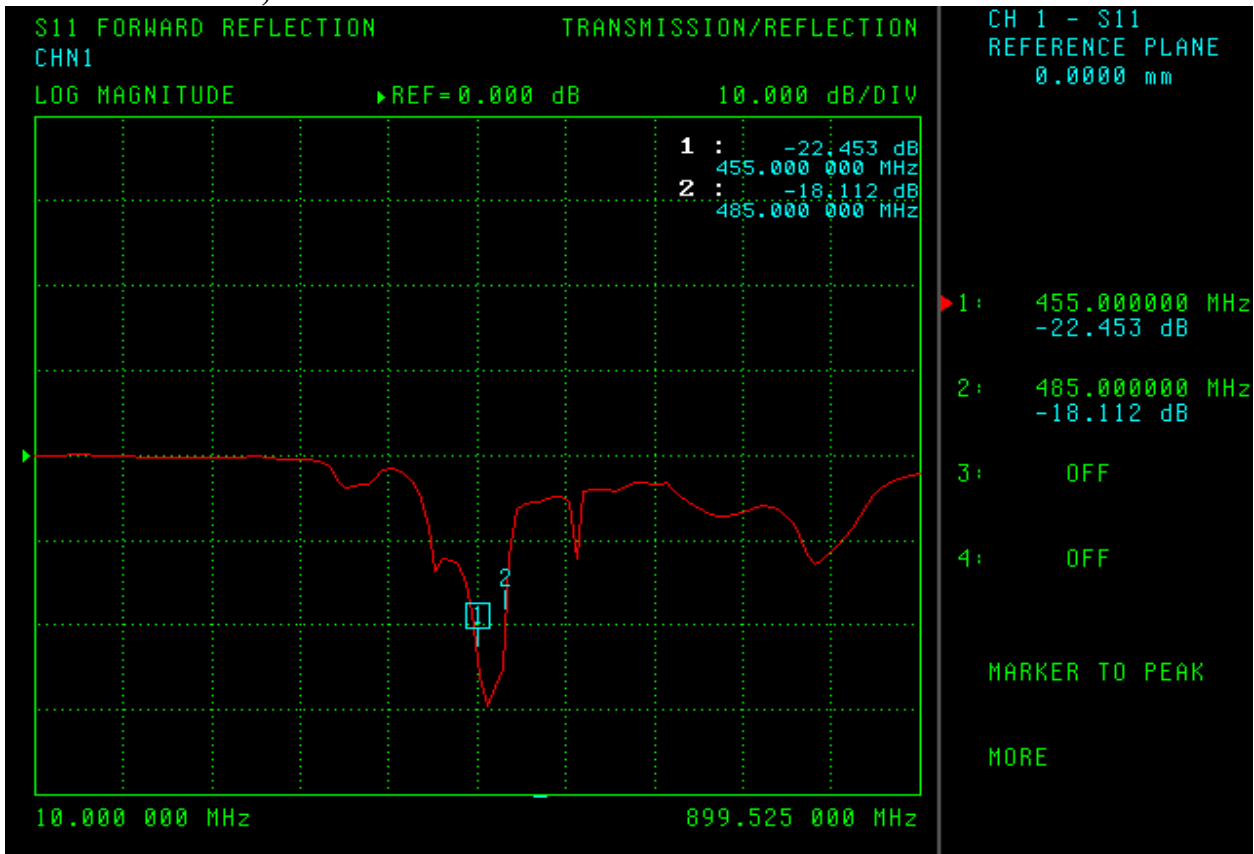
Parameter	Description
Antenna Type	External Antenna
Touch Type	Screw Type
Connector Type	SMA 180° (Male)
Antenna Dimensions	980 mm $\pm$ 10
Antenna Color	Black

Operating Temperature Range	-40°C~+85°C
Storage Temperature Range	-40°C~+85°C

## 2. Appearance



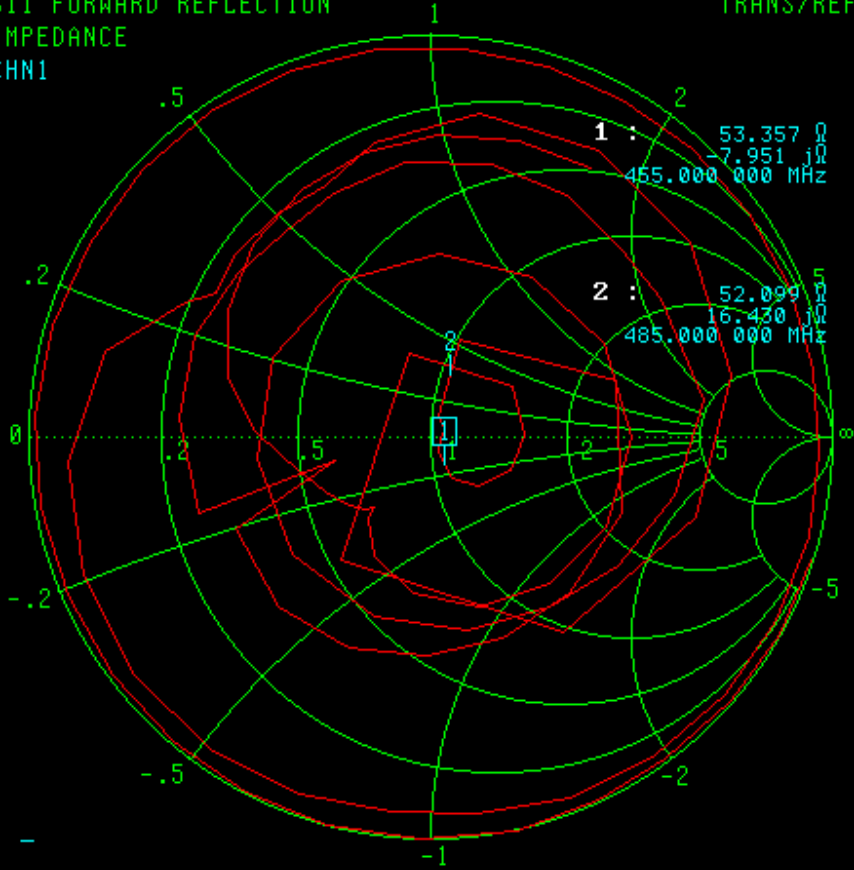
### 3. 1 Return Loss, V.S.W.R. and Smith Chart



S11 FORWARD REFLECTION  
IMPEDANCE  
CHN1

TRANS/REFL

CH 1 - S11  
REFERENCE PLANE  
0.0000 mm



1: 455.000000 MHz  
53.357  $\Omega$   
-7.951  $j\Omega$

2: 485.000000 MHz  
52.099  $\Omega$   
16.430  $j\Omega$

3: OFF

4: OFF

MARKER TO PEAK

MORE