

# Vehicle Locating & Marine Small

## GPS/GSM Antenna

### MODEL: GAF-62

Small size and ruggedness, demand of vehicle locating and marine navigation GPS/ GLONASS/GSM antenna that will sustain harsh environment.



- Low noise figure
- Fully weather proof IPX8 .
- Ultra-high Sensitivity
- Compact construction
- Excellent temperature stability

### Specifications:

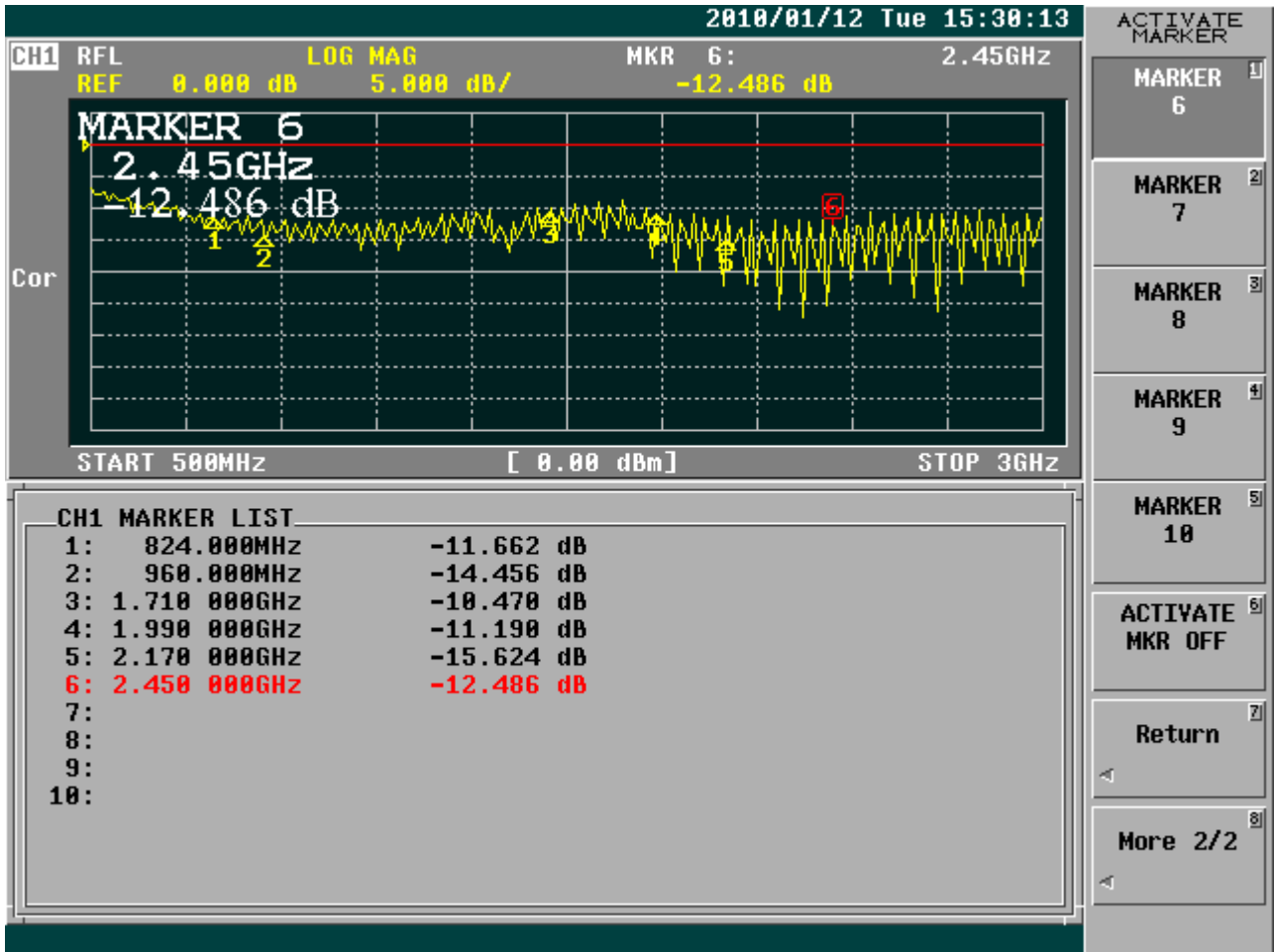
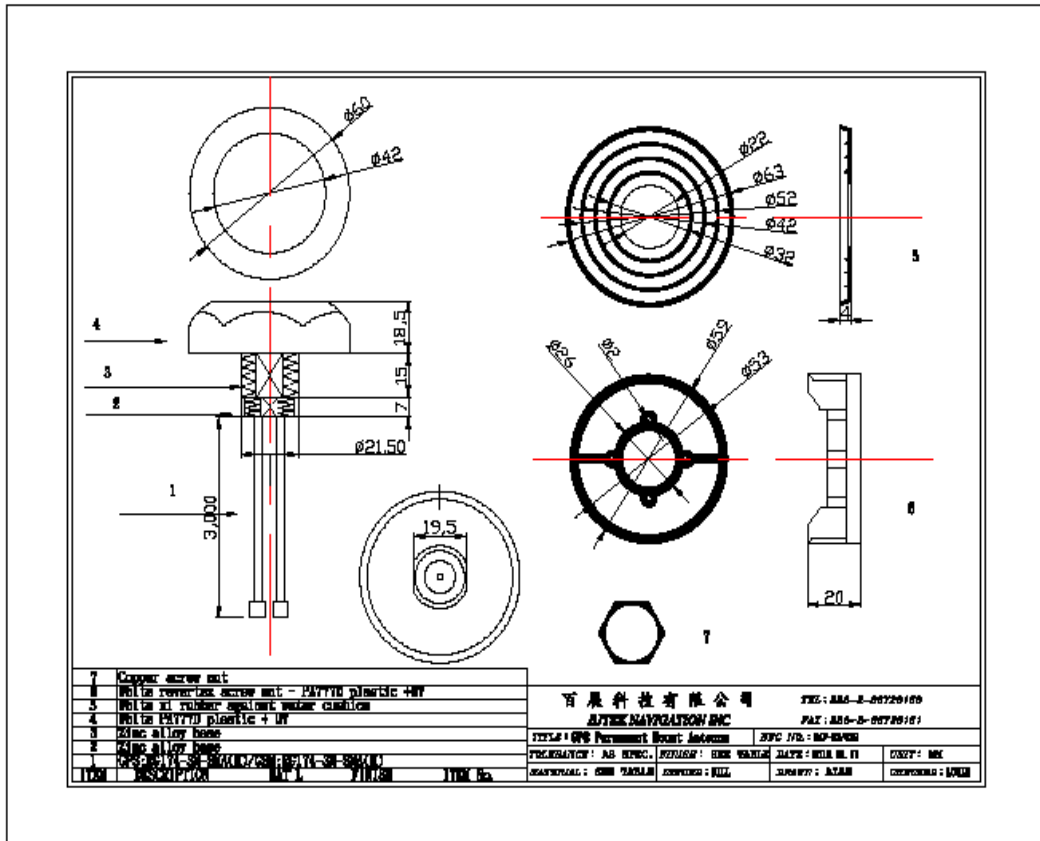
PHYSICAL CONDITION	
Constructions:	Polycarbonate radome, detachable cable/connector for easy mount, rubber-O-ring between top radome and screw base for waterproof
Dimensions:	60mm(Dia.) x 18.5mm(H)
Weight:	65grams (w/o cable & connector).
Color:	Standard in ivory white, other colours available upon request.
Mounting:	Bulkhead mount with 0.8 inch threaded wing nut (standard accessory).
Cable & Connector	
RF cable:	RG174-5M or 3M (standard) other length (optional)
Pulling strength:	6 Kg @ 5sec. molded plastic on connector end for strain relief.
Connector	SMA(M)
Antenna Element	
Center Frequency:	1575.42 MHz +/-1.023 MHz
Polarization:	R.H.C.P. (Right Handed Circular Polarization).
Absolute Gain @ Zenith:	+5 dBi typical.
Gain @ 10° Elevation:	-1 dBi typical.
Axial Ratio:	3 dB max.
Output VSWR:	1.5 max
Output Impedance:	50 ohm
Low Noise Amplifier	
Center Frequency:	1575.42 MHz
Power Gain:	28db +/-4.5db
Bandwidth:	2 MHz min.
Noise Figure:	1.5 min.

Outer Band Attenuation:	20 dB min. @ Fo +/-50 Mhz.
Supply Voltages:	2.5~5.5V DC.
Current Consumption:	2.5V : 6.6mA Typ. 3V: 8.6mA Typ. 4V: 12.6mA Typ. 5V: 16.6mA Typ.
Output Impedance:	50W ohm
<b>Overall Performance: (antenna element, LNA &amp; coax cable)</b>	
Center Frequency:	1575.42 Mhz.
Gain:	At 90° vertical to sky 30 ± 4.5dBi (cable loss) Note:1 Mounted on the 60mm x 60mm square ground plane
Noise Figure:	2.0 max.
Axial Ratio:	3 dB max.
Bandwidth:	2MHz min.
VSWR:	2.0 max.
Output Impedance:	50W ohm
<b>Environmental</b>	
Operating Temperature:	-40°C~ +85°C.
Storage Temperature:	-50°C~ +90°C.
Relative Humidity:	95% non-condensing.
Water Resistance:	100% waterproof.
<b>GSM / CDMA / 3G /</b>	
Frequency	850/900/1800/1900/2170
VSWR	2.0
Impedence	50Ω
Cable type	RG174
Cable length	5M or 3M
Connector	SMA Coding or Others

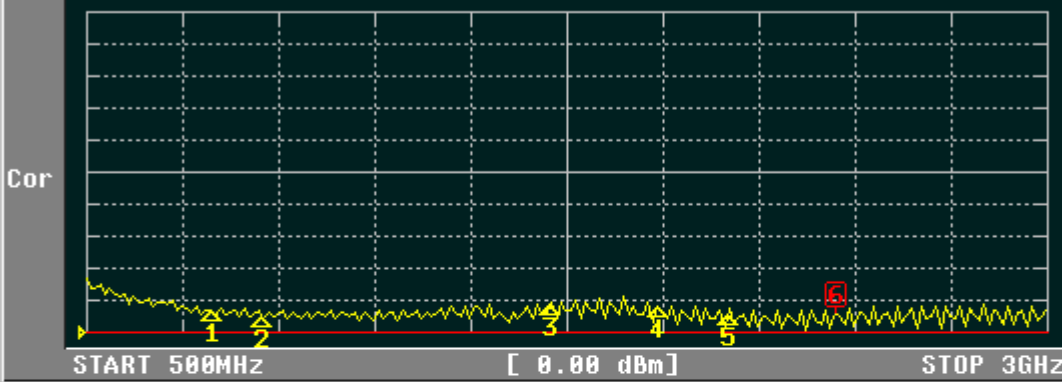
\* This specification is subject to change without prior notice

Data Updated: Sep.23, 2009





CH1 RFL SWR MKR 6: 2.45GHz  
 REF 1.000 1.000 / 1.628



CH1 MARKER LIST

1:	824.000MHz	1.706
2:	960.000MHz	1.477
3:	1.710 000GHz	1.867
4:	1.990 000GHz	1.767
5:	2.170 000GHz	1.525
6:	2.450 000GHz	1.629
7:		
8:		
9:		
10:		

FORMAT

SWR <sup>1]</sup>

REAL <sup>2]</sup>

IMAG <sup>3]</sup>

PHASE <sup>4]</sup>  
 -∞, +∞

LOG MAG & <sup>5]</sup>  
 PHASE

LOG MAG & <sup>5]</sup>  
 DELAY

LIN MAG & <sup>7]</sup>  
 PHASE

More 2/2 <sup>8]</sup>