

433Mhz Antenna

MODEL: TH-433F



1. GENERAL DESCRIPTION

P/N
TH433F-SMA(M) or RP-SMA(M)

Below is a table summarizing the antenna design specification.

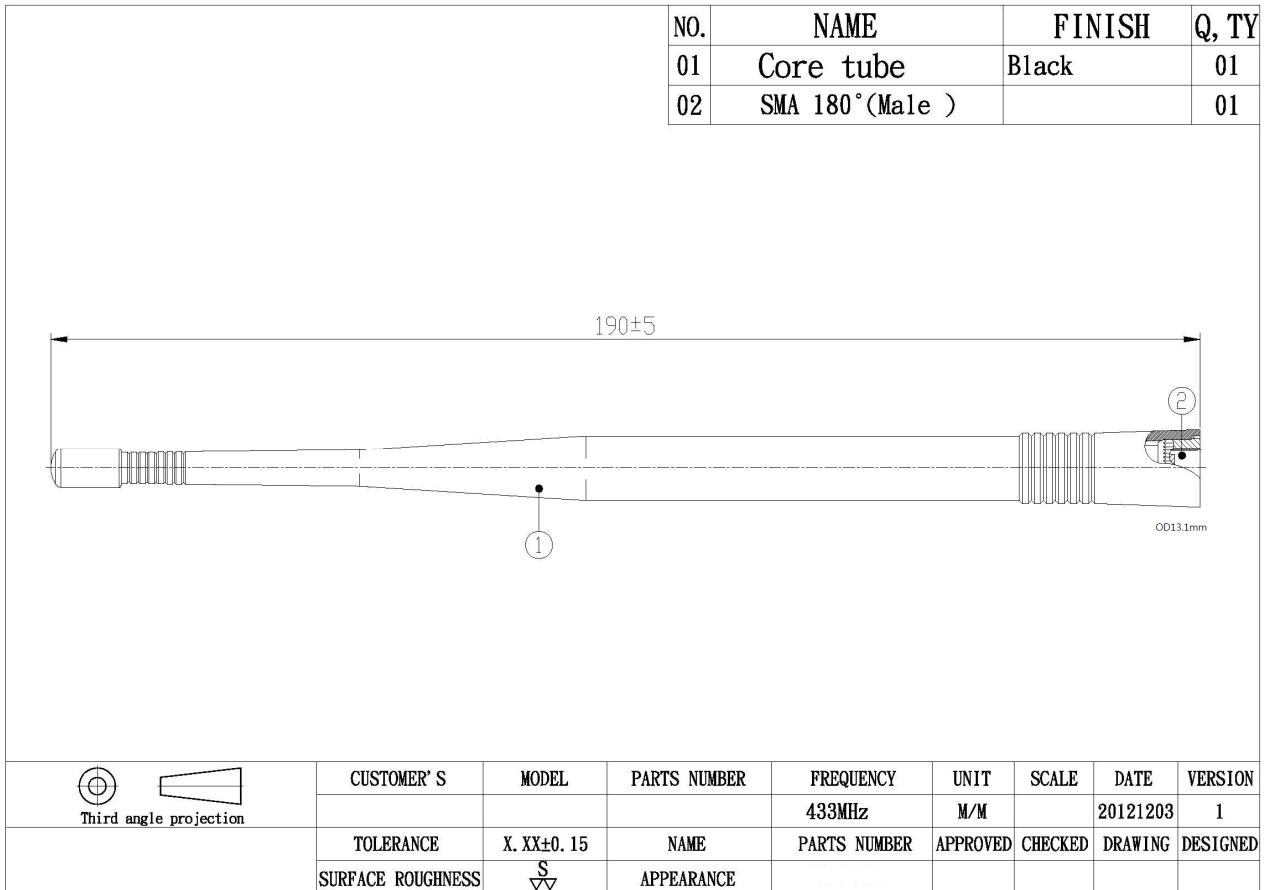
1.2 Electrical Properties

Parameter	Description
Frequency Band	433MHz
Nominal Impedance	50 ohm
Polarization	Vertical
Return Loss	Please See Data-1
V.S.W.R	2.0:1

1.2 Mechanical Properties

Parameter	Description
Antenna Type	External Antenna
Touch Type	Screw Type
Connector Type	SMA (M) or RP-SMA(M)
Antenna Dimensions	190mm±5
Antenna Color	Black
Operating Temperature Range	-30°C~+70°C
Storage Temperature Range	-40°C~+80°C

2. Appearance



3. FREQUENCY

