

UHF Antenna

MODEL: TH-390A



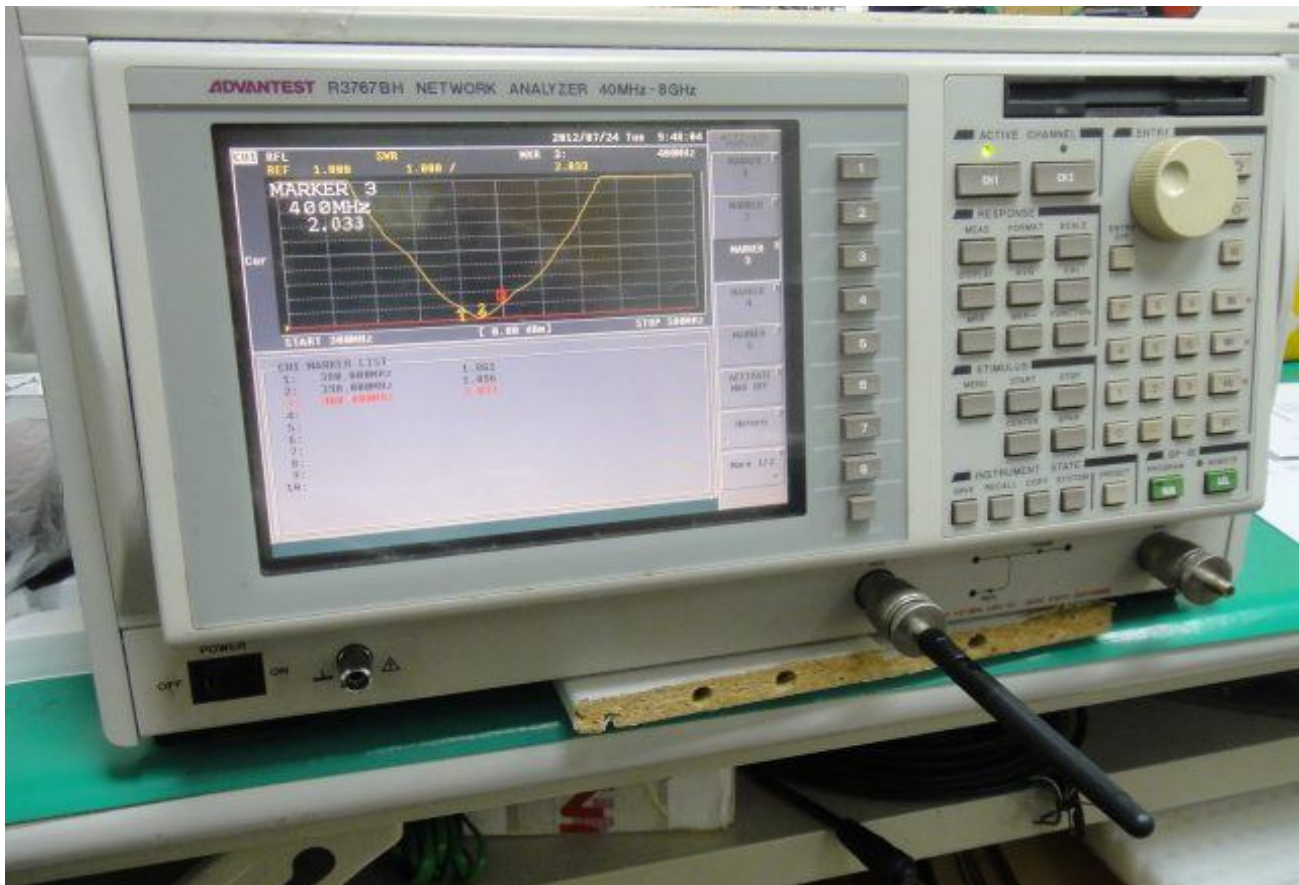
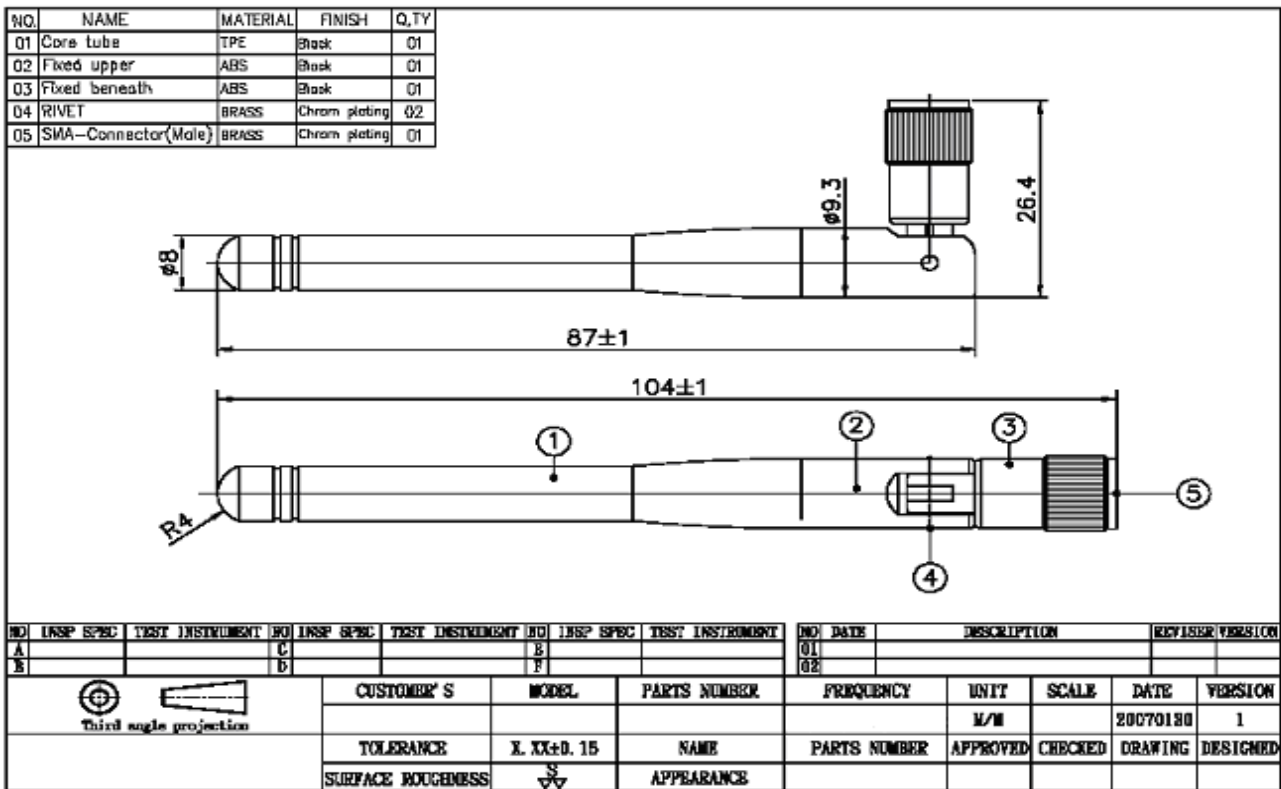
1.1 Electrical Properties

Parameter	Description
Frequency Band	380~400 MHz
Nominal Impedance	50 ohm
Polarization	Vertical
V.S.W.R	2.0:1
Antenna Average Gain	0dBi
Note: Gain includes the cable loss	

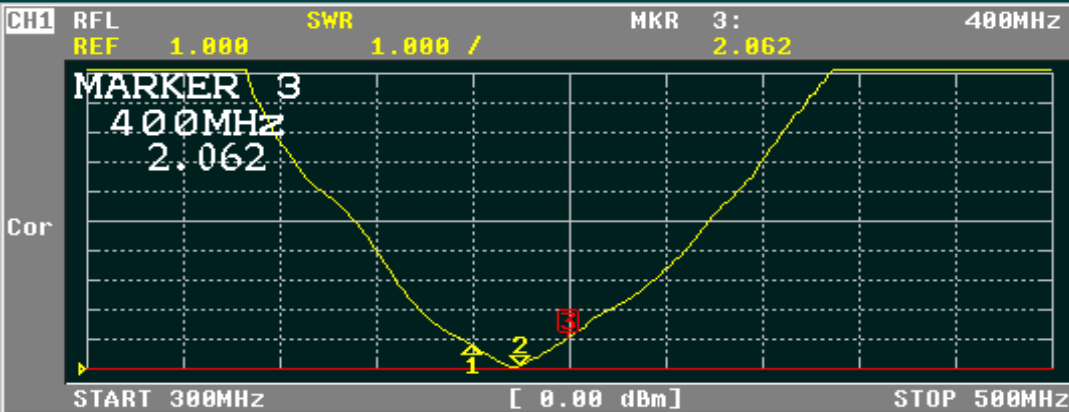
1.2 Mechanical Properties

Parameter	Description
Antenna Type	External Antenna
Antenna Cover	ABS
Touch Type	Screw Type
Connector Type	SMA 180°(Male)
Antenna Dimensions	104mm±2
Antenna Color	Black
Operating Temperature Range	-20°C~+60°C
Storage Temperature Range	-30°C~+70°C

2. APPEARANCE



3. FREQUENCY



CH1 MARKER LIST

1:	380.000MHz	1.790
2:	390.000MHz	1.134
3:	400.000MHz	2.063
4:		
5:		
6:		
7:		
8:		
9:		
10:		

ACTIVATE MARKER

MARKER 1

MARKER 2

MARKER 3

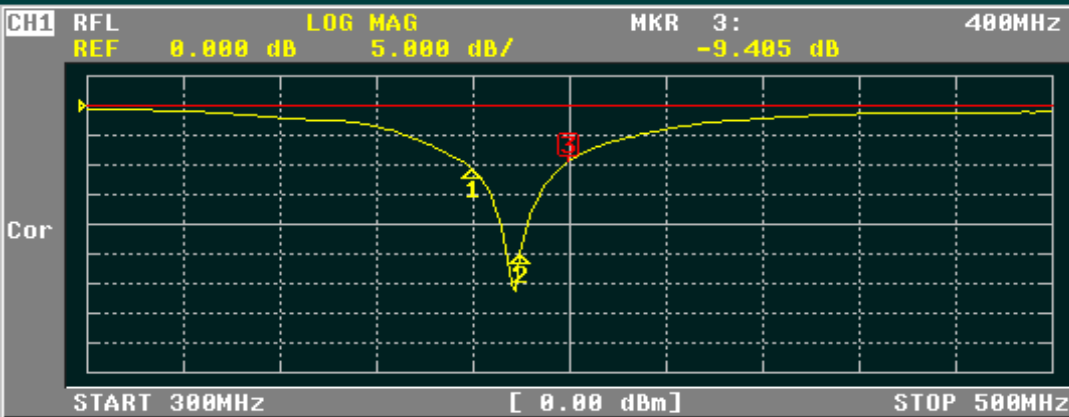
MARKER 4

MARKER 5

ACTIVATE MKR OFF

Return

More 1/2



CH1 MARKER LIST

1:	380.000MHz	-10.741 dB
2:	390.000MHz	-25.015 dB
3:	400.000MHz	-9.448 dB
4:		
5:		
6:		
7:		
8:		
9:		
10:		

FORMAT

LOG MAG

PHASE

DELAY

SMITH (R+jX)

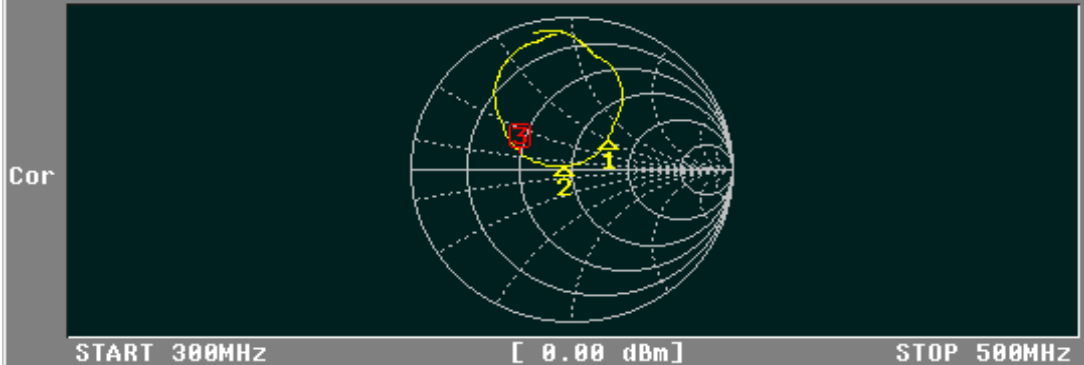
SMITH (G+jB)

POLAR

LIN MAG

More 1/2

CH1 RFL SMITH(R+jX) MKR 3: 400MHz
 FS 1.000 25.006 Ω 6.653 Ω



CH1 MARKER LIST

1:	380.000MHz	70.178 Ω	30.011 Ω	12.569nH
2:	390.000MHz	45.137 Ω	2.038 Ω	831.820pH
3:	400.000MHz	25.201 Ω	6.642 Ω	2.643nH
4:				
5:				
6:				
7:				
8:				
9:				
10:				

FORMAT

LOG MAG

PHASE

DELAY

SMITH (R+jX)

SMITH (G+jB)

POLAR

LIN MAG

More 1/2