

DVBT ANTENNA

Model : TH-600



1. GENERAL DESCRIPTION

Model No	
	TH-600-SMA(M)

Below is a table summarizing the antenna design specification.

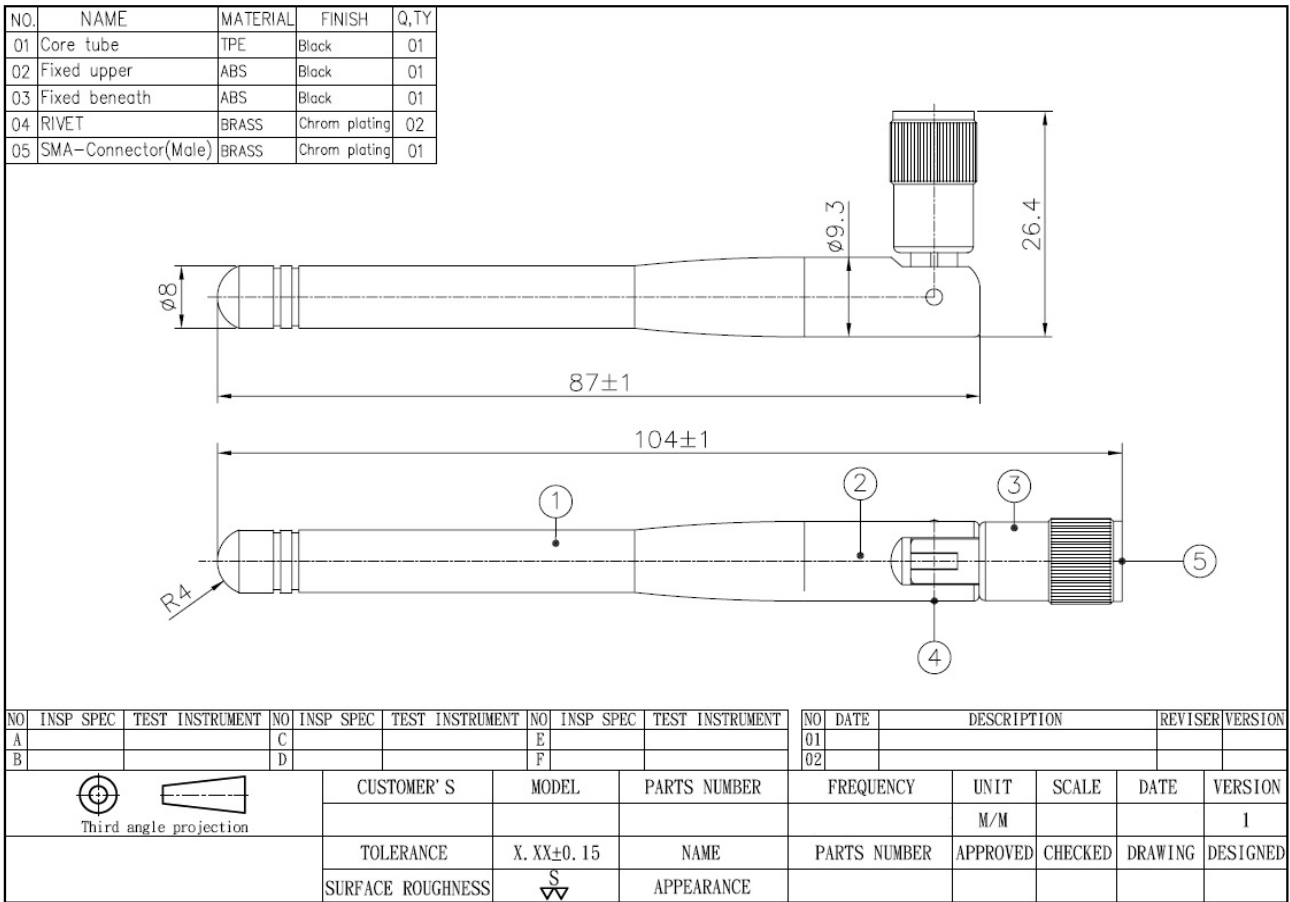
1.1 Electrical Properties

Parameter	Description
Frequency Band	470-900 MHz
Nominal Impedance	50 ohm
Polarization	Vertical
Return Loss	Please See Data-1
V.S.W.R	3.0:1
Note: Gain includes the cable loss	

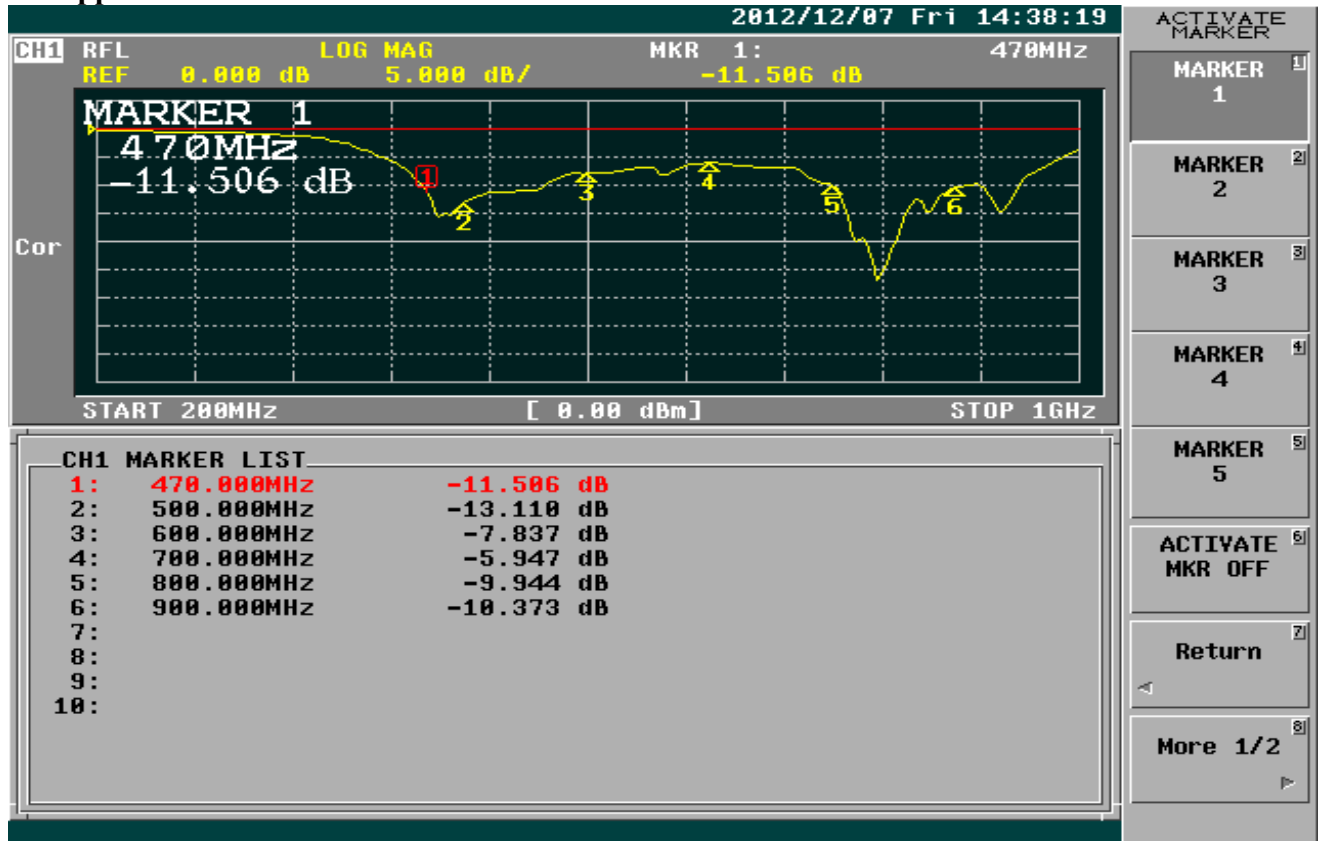
1.2 Mechanical Properties

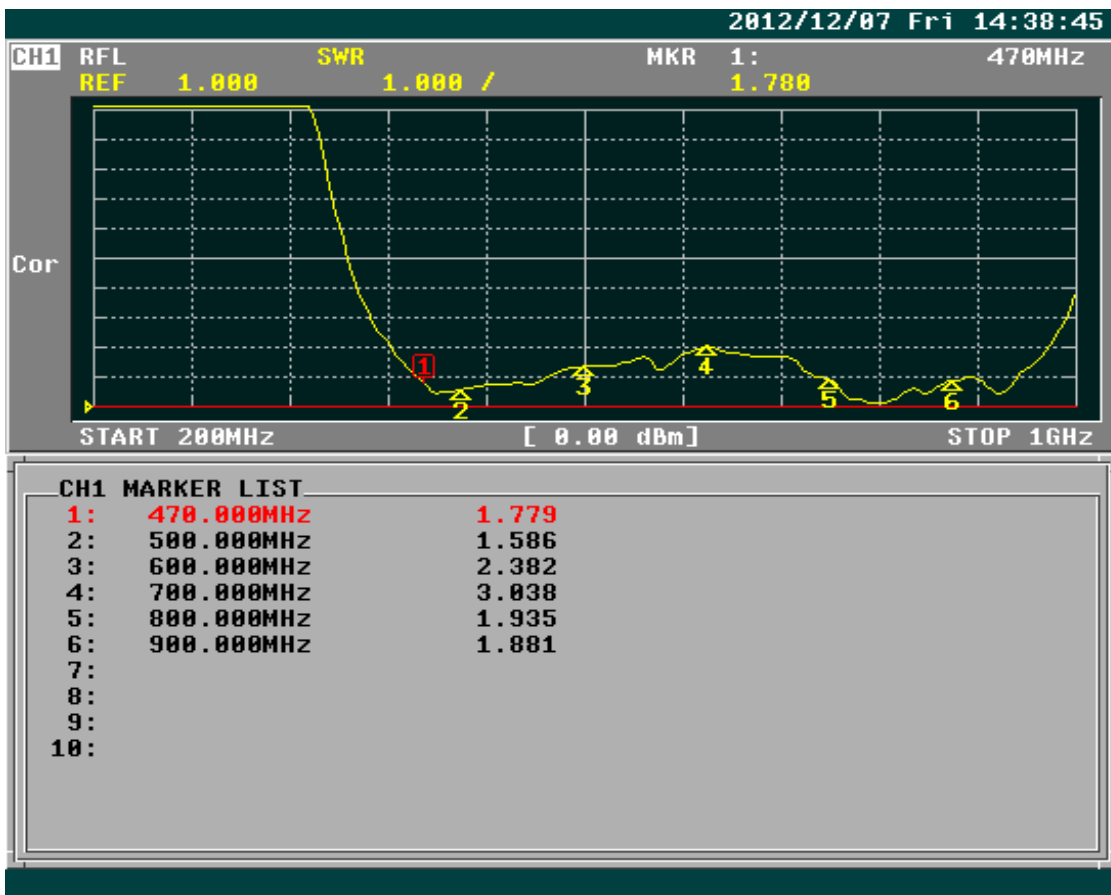
Parameter	Description
Antenna Type	External Antenna
Antenna Cover	TPR
Touch Type	Screw Type
Connector Type	SMA180°
Antenna Dimensions	104mm±1
Antenna Color	Black
Operating Temperature Range	-30°C~+70°C
Storage Temperature Range	-30°C~+70°C

2. Appearance



3. Appearance





FORMAT

SWR ¹

REAL ²

IMAG ³

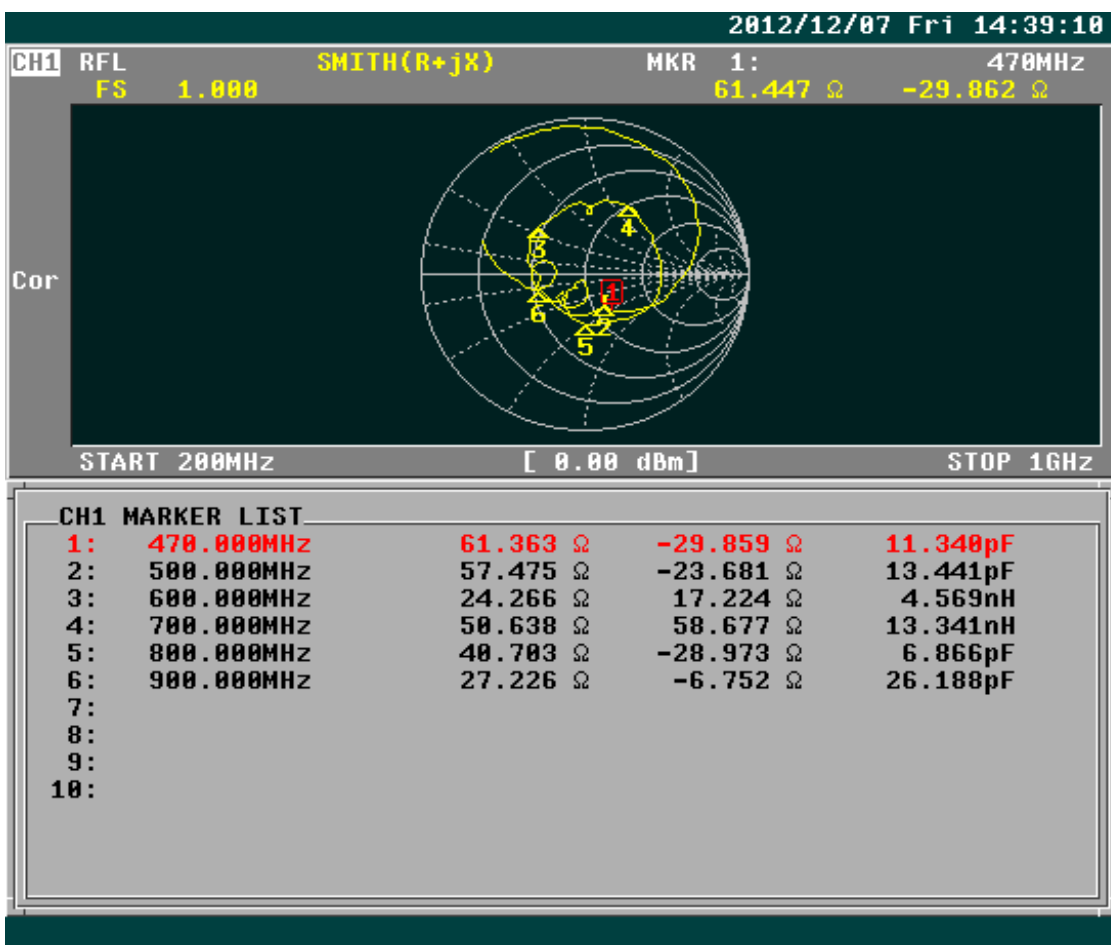
PHASE ⁴
-∞, +∞

LOG MAG & ⁵
PHASE

LOG MAG & ⁶
DELAY

LIN MAG & ⁷
PHASE

More 2/2 ⁸



FORMAT

LOG MAG ¹

PHASE ²

DELAY ³

SMITH (R+jX) ⁴

SMITH (G+jB) ⁵

POLAR ⁶

LIN MAG ⁷

More 1/2 ⁸