

RFID Antenna

MODEL: TH-81-915



1. GENERAL DESCRIPTION

Model No
TH81-SMA(M)-915

Below is a table summarizing the antenna design specification.

1.1 Electrical Properties

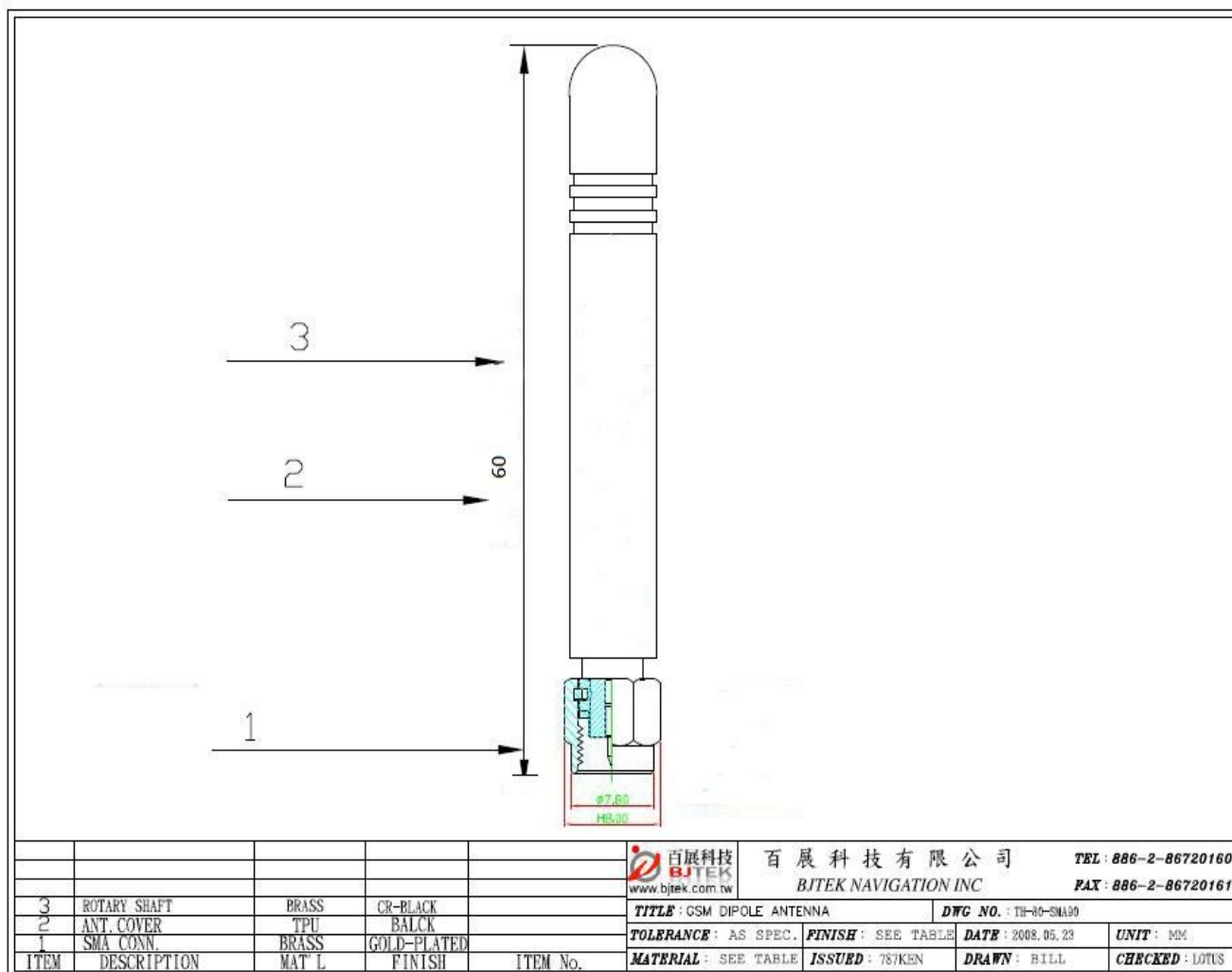
Parameter	Description
Frequency Band	750~860~960MHz
Nominal Impedance	50 ohm
Polarization	Vertical
Return Loss	Please See Data-1
V.S.W.R	2.0 : 1
Gain	1db
Note: Gain includes the cable loss	

1.2 Mechanical Properties

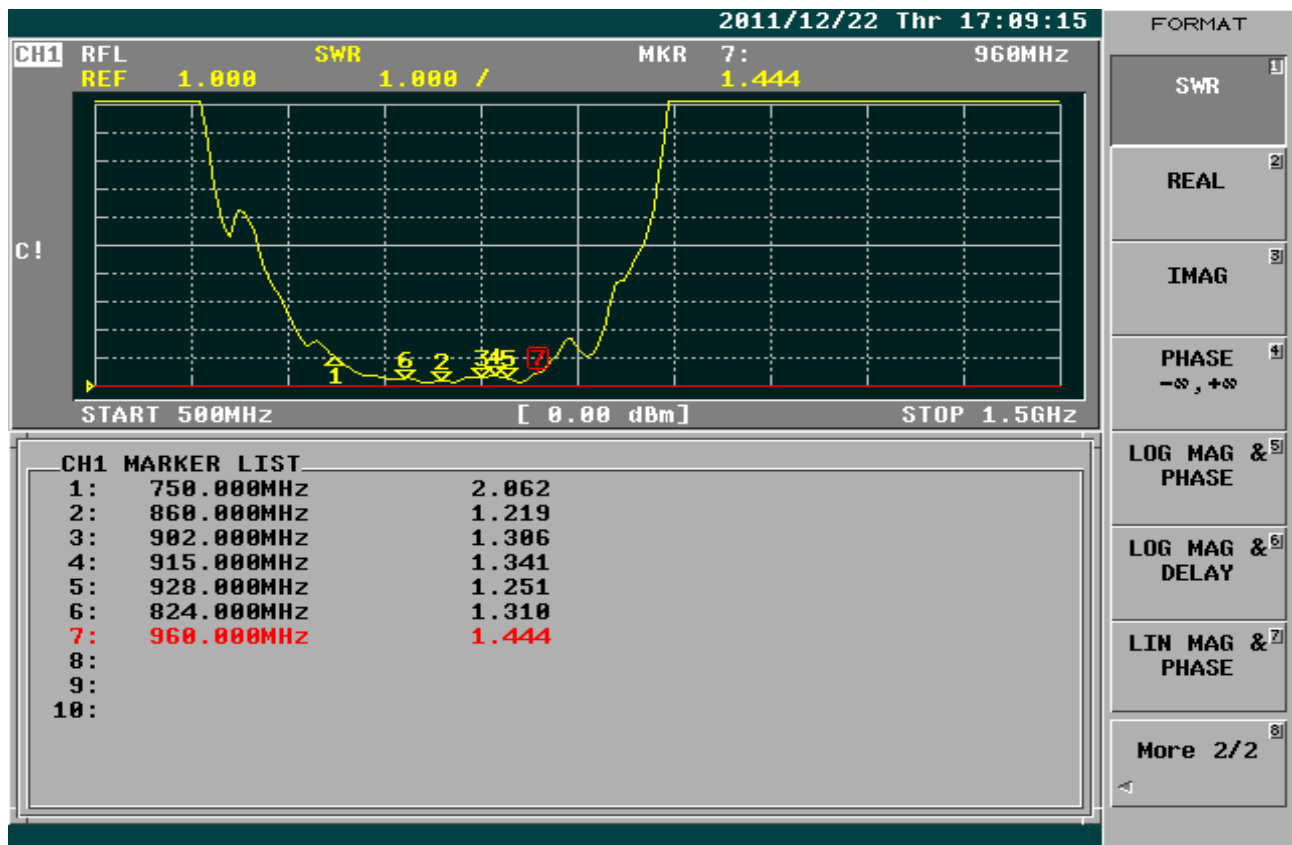
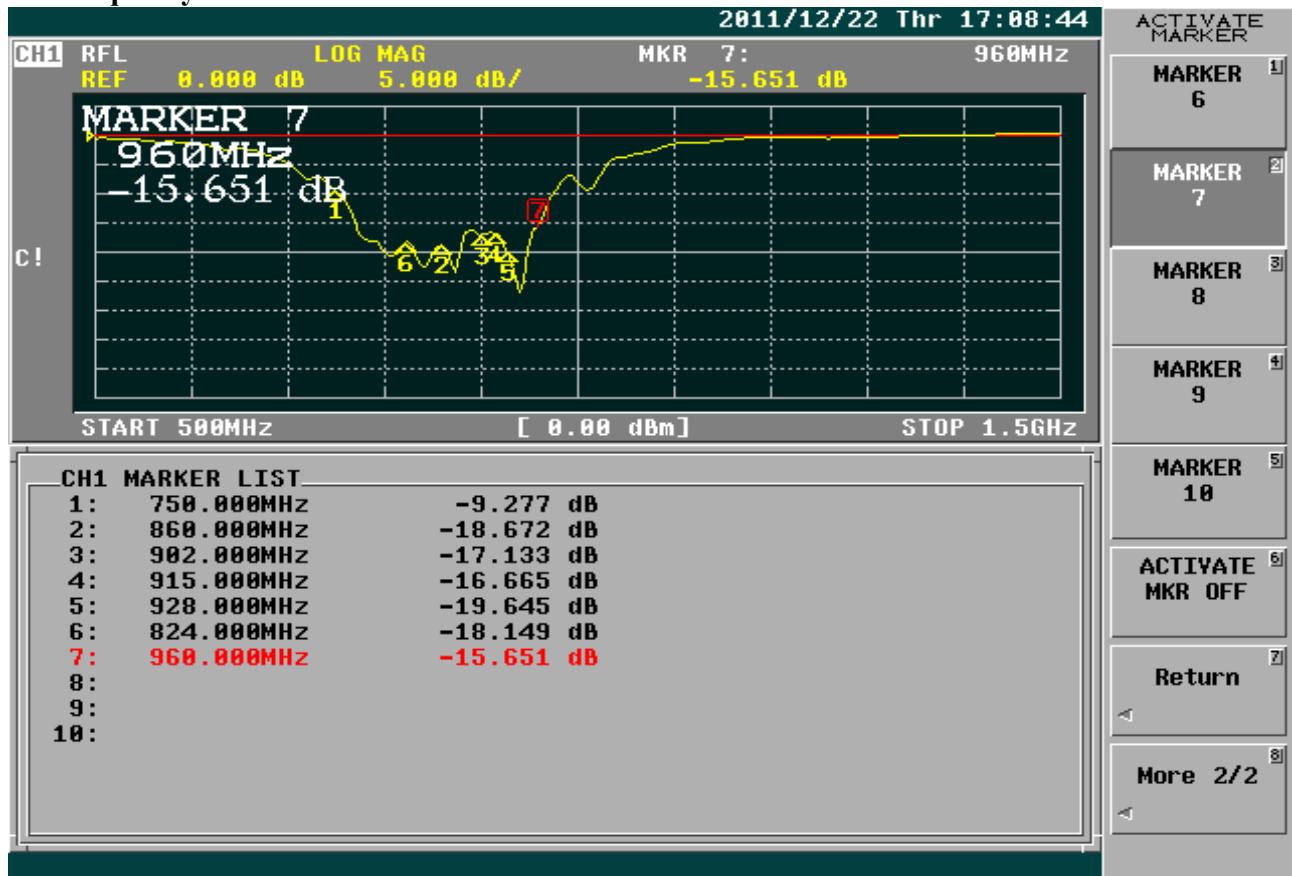
Parameter	Description
Antenna Type	External Antenna
Antenna Material	TPU
Touch Type	Screw Type
Connector Type	SMA 180°(Male)

Antenna Dimensions	60mm \pm 2
Antenna Color	Black
Operating Temperature Range	-20°C~+60°C
Storage Temperature Range	-30°C~+70°C

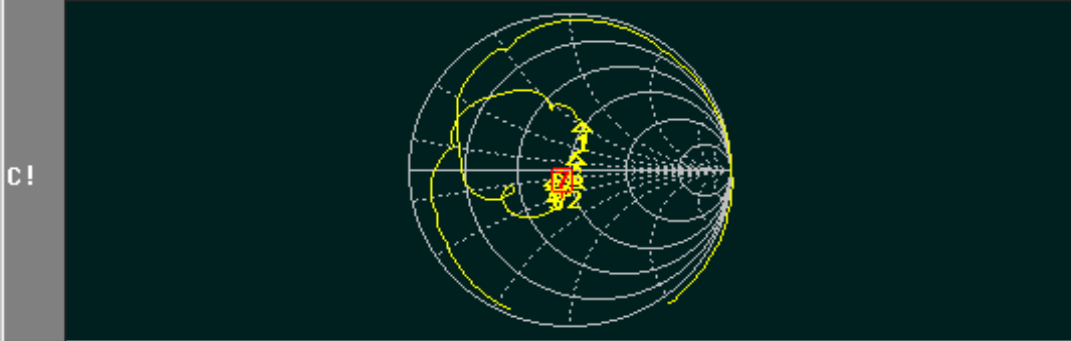
2. Appearance



3. Frequency



CH1 RFL SMITH(R+jX) MKR 7: 960MHz
 FS 1.000 43.102 Ω -15.956 Ω



START 500MHz [0.00 dBm] STOP 1.5GHz

CH1 MARKER LIST

1:	750.000MHz	47.001 Ω	32.470 Ω	6.890nH
2:	860.000MHz	52.253 Ω	-10.130 Ω	18.267pF
3:	902.000MHz	40.871 Ω	-3.284 Ω	53.718pF
4:	915.000MHz	40.741 Ω	-1.431 Ω	121.520pF
5:	928.000MHz	44.319 Ω	249.654mΩ	42.816pH
6:	824.000MHz	53.392 Ω	12.169 Ω	2.350nH
7:	960.000MHz	43.102 Ω	-15.956 Ω	10.390pF
8:				
9:				
10:				

FORMAT

LOG MAG

PHASE

DELAY

SMITH
(R+jX)

SMITH
(G+jB)

POLAR

LIN MAG

More 1/2