

# 2.4 & 5.8G Antenna

**MODEL: TH81-2.4 & 5.8G**



## 1. GENERAL DESCRIPTION

Model No
TH81-SMA(M)-2.4 & 5.8G

Below is a table summarizing the antenna design specification.

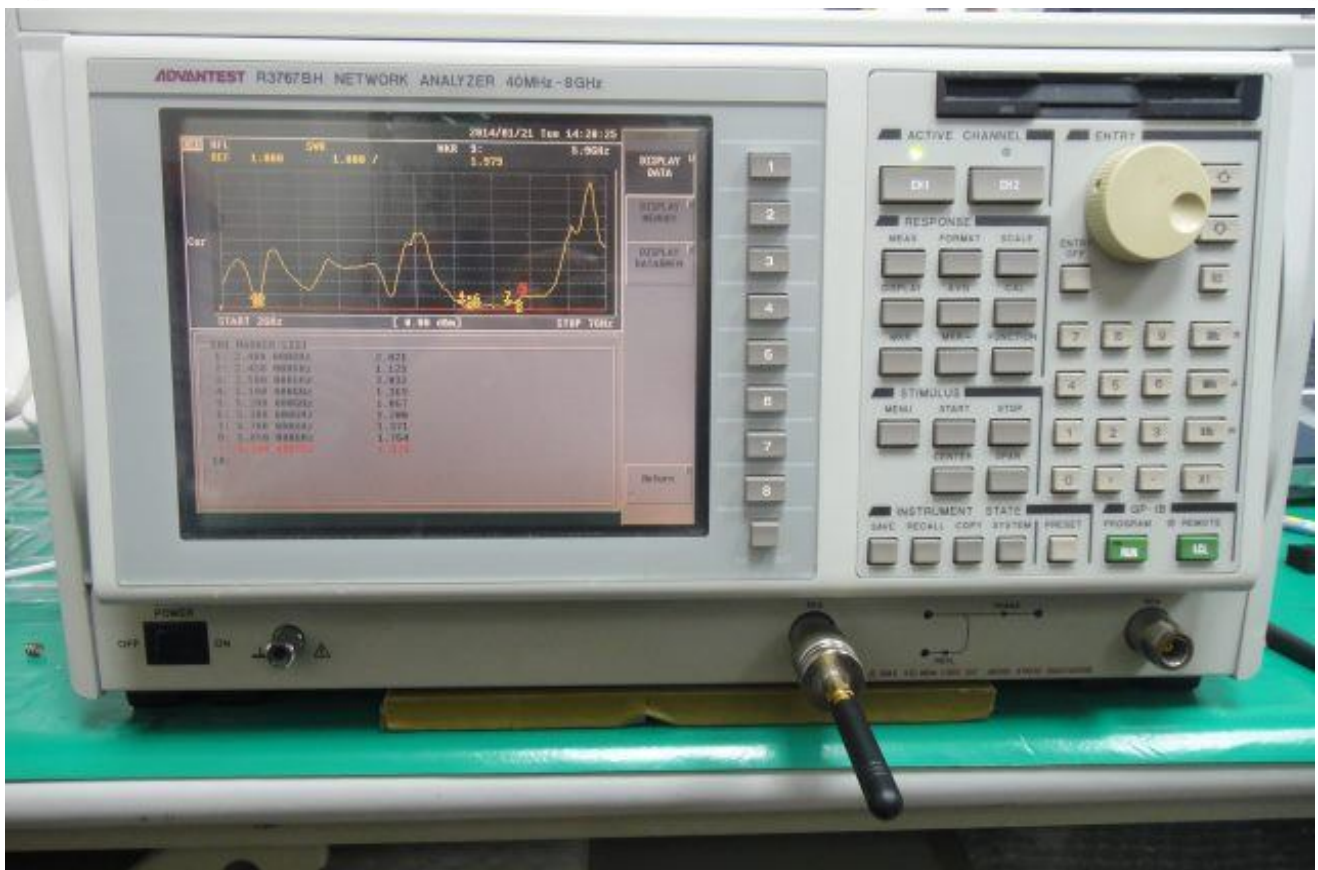
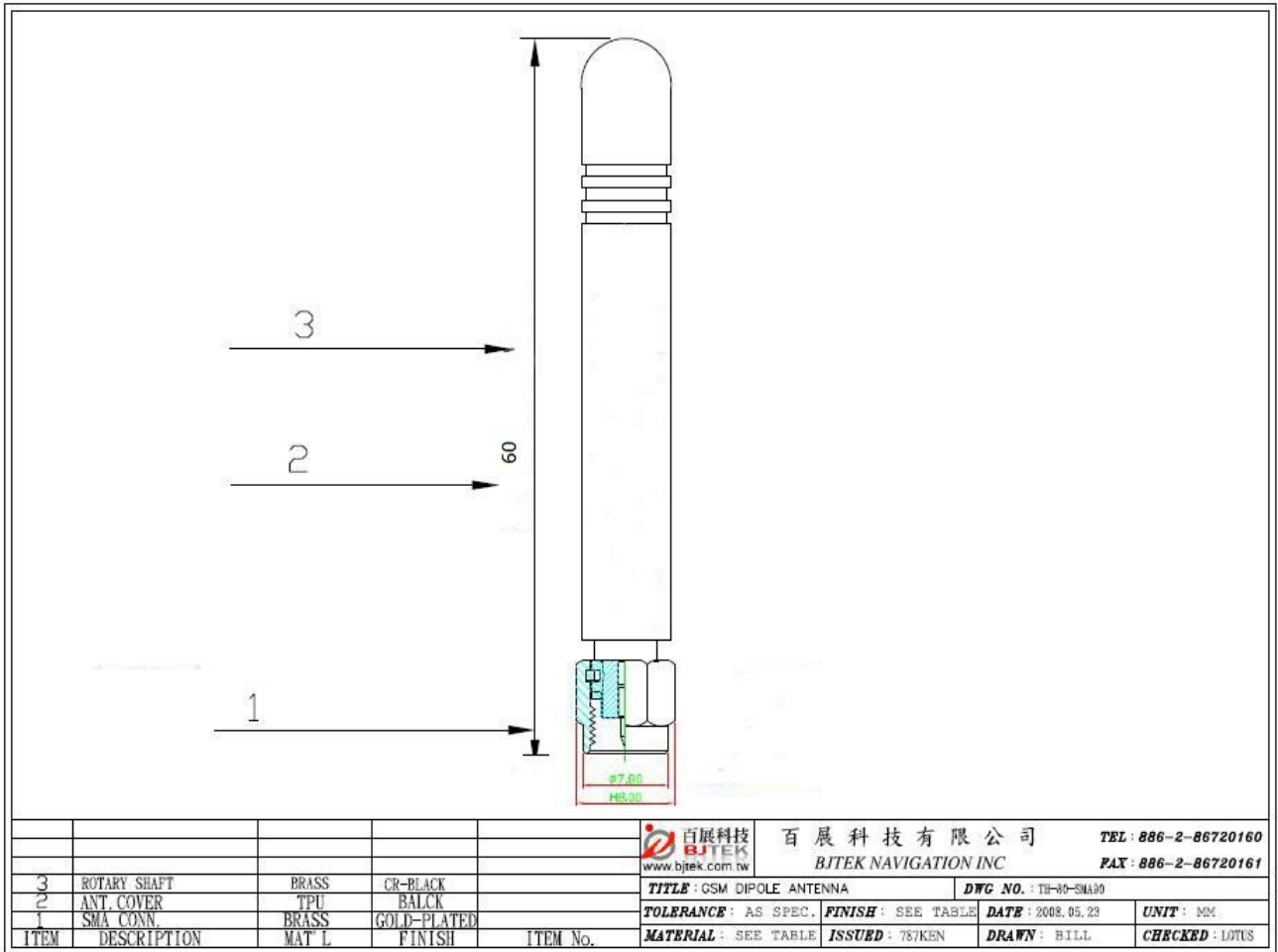
### 1.1 Electrical Properties

Parameter	Description
Frequency Band	2.4 ~2.5GHz & 4.9~5.85Ghz
Nominal Impedance	50 ohm
Polarization	Vertical
Return Loss	Please See Data-1
V.S.W.R	2.5 : 1
Gain	1-2db
Note: Gain includes the cable loss	

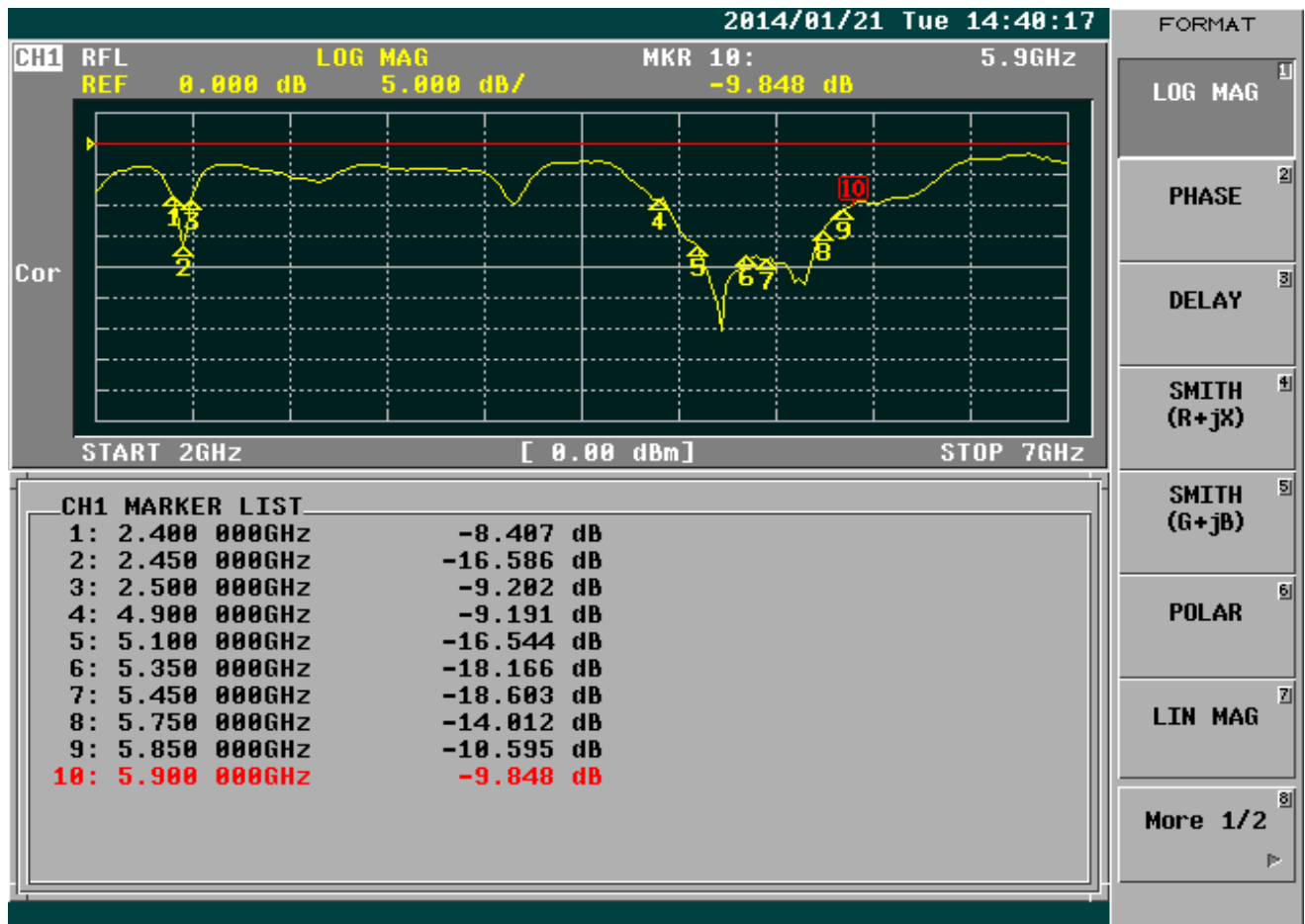
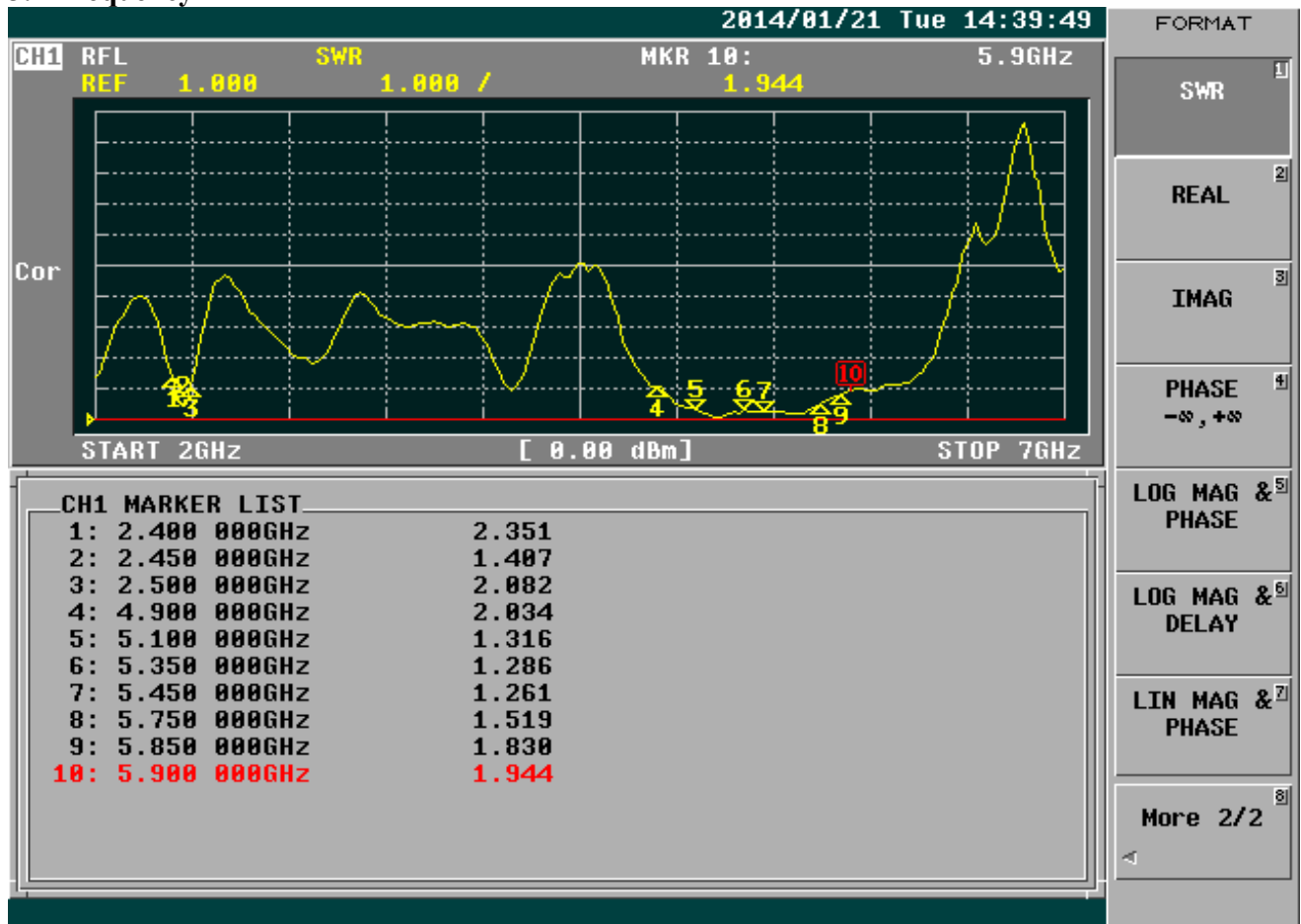
### 1.2 Mechanical Properties

Parameter	Description
Antenna Type	External Antenna
Antenna Material	TPU
Touch Type	Screw Type
Connector Type	SMA 180°(Male)
Antenna Dimensions	60mm ±2
Antenna Color	Black
Operating Temperature Range	-30°C~+70°C
Storage Temperature Range	-30°C~+70°C

## 2. Appearance

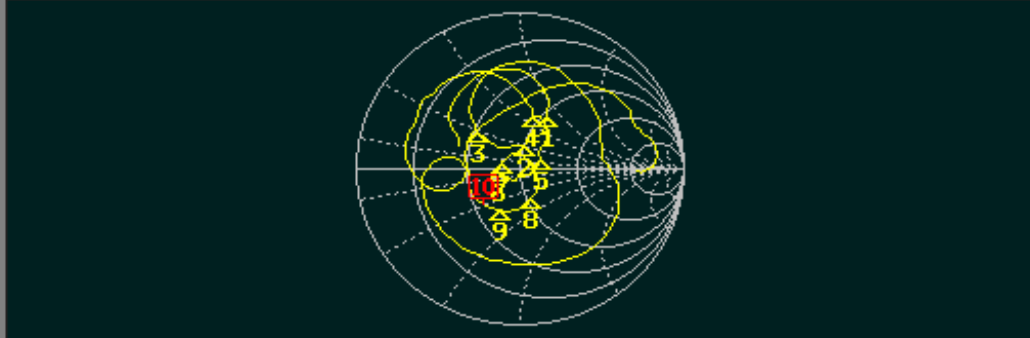


### 3. Frequency



CH1 RFL SMITH(R+jX) MKR 10: 5.9GHz  
 FS 1.000 28.684 Ω -14.566 Ω

Cor



START 2GHz [ 0.00 dBm] STOP 7GHz

CH1 MARKER LIST

1:	2.400 000GHz	52.826 Ω	41.847 Ω	2.775nH
2:	2.450 000GHz	50.625 Ω	14.842 Ω	964.157pH
3:	2.500 000GHz	26.869 Ω	14.167 Ω	901.954pH
4:	4.900 000GHz	45.954 Ω	34.030 Ω	1.105nH
5:	5.100 000GHz	63.696 Ω	8.785 Ω	274.180pH
6:	5.350 000GHz	38.435 Ω	-1.390 Ω	21.398pF
7:	5.450 000GHz	39.700 Ω	3.234 Ω	94.456pH
8:	5.750 000GHz	52.957 Ω	-21.069 Ω	1.313pF
9:	5.850 000GHz	34.074 Ω	-19.563 Ω	1.390pF
10:	5.900 000GHz	28.820 Ω	-14.490 Ω	1.861pF

FORMAT

LOG MAG

PHASE

DELAY

SMITH (R+jX)

SMITH (G+jB)

POLAR

LIN MAG

More 1/2