

2.4G Antenna

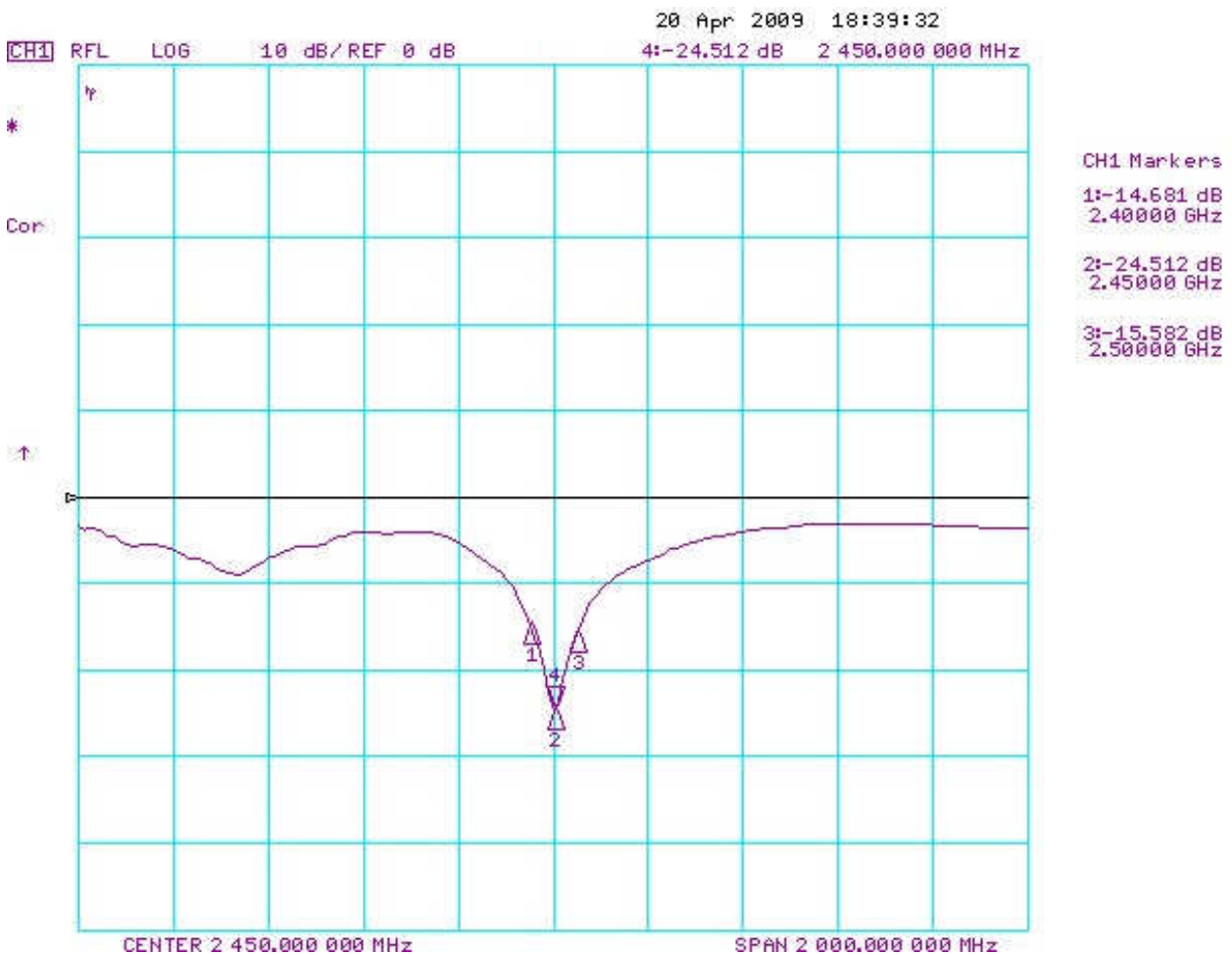
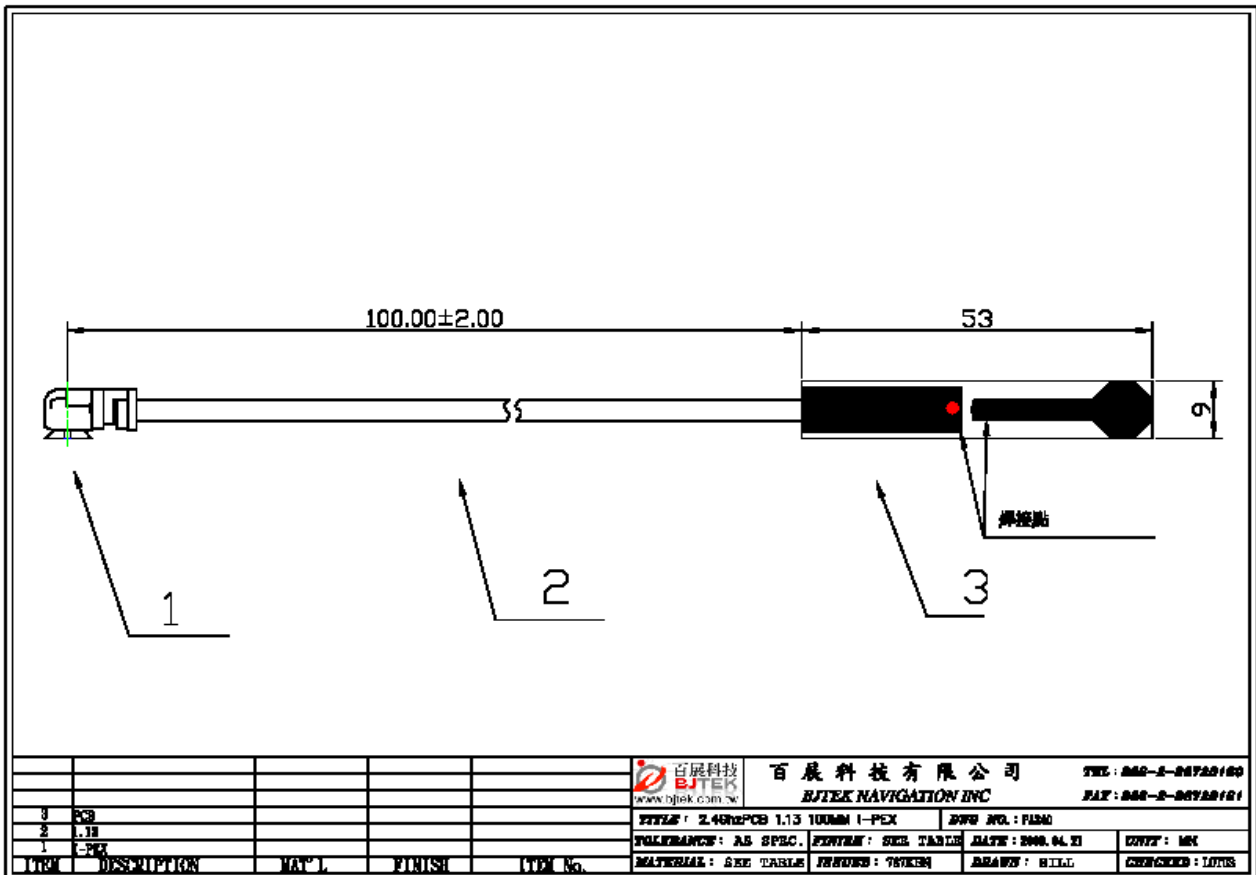
MODEL: PA-240

P/N:PA-240-113-100-IPEX



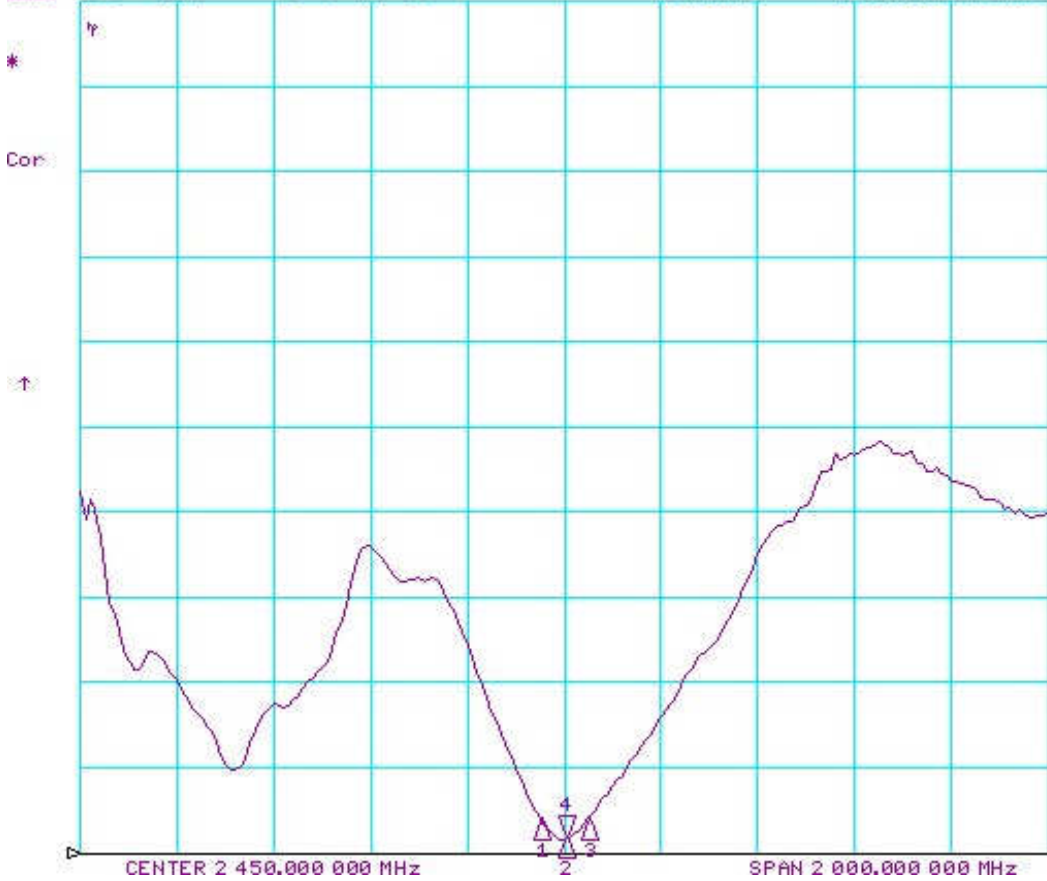
SPECIFICATION-ELECTRIC

1.	WORKING FREQUENCY	2.400-2.500GHz
2.	ELECTRIC WAVE	1/2 λ : DIPOLE
3.	IMPEDANCE	50 Ohm , Nominal
4.	V.S.W.R	2.0
5.	GAIN	0~2.0 dBi
6.	RADIATION	0 mni
7.	POLARIZATION	VERTICAL
8.	POWER HANDLING	1 W MAX
9.	OPERATING TEMPERATURE	-20°C -- +50°C



20 Apr 2009 18:39:49

CH1 RFL SWR 1 / REF 1 4: 1.1716 2 450.000 000 MHz



CH1 Markers

1: 1.3785
2.40000 GHz

2: 1.1716
2.45000 GHz

3: 1.3799
2.50000 GHz