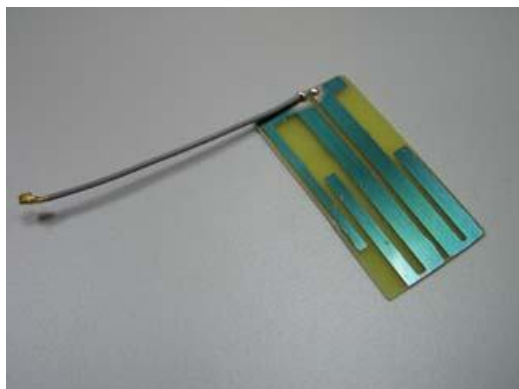


# 5.8GHz Antenna

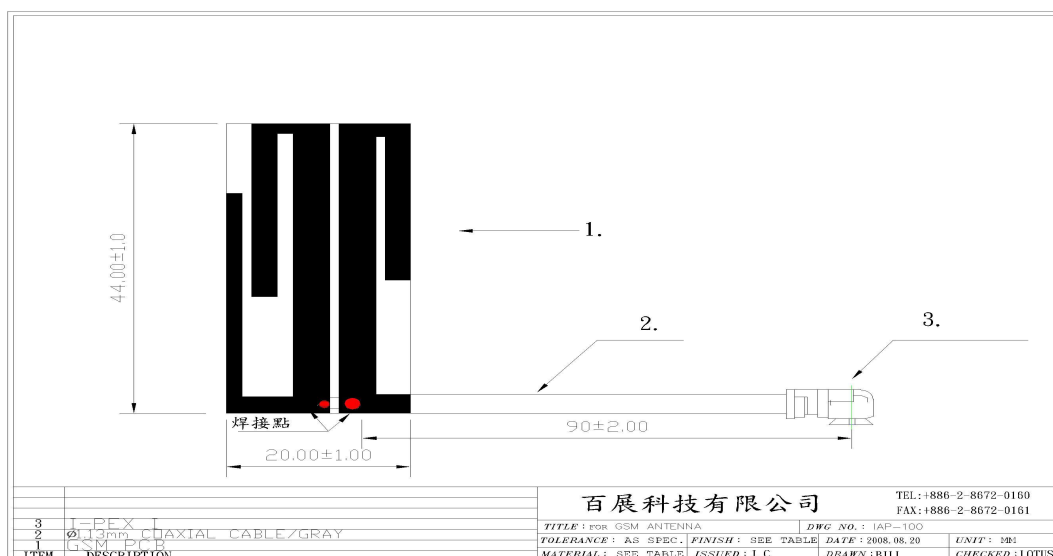
**MODEL: IAP-100-5.8G**

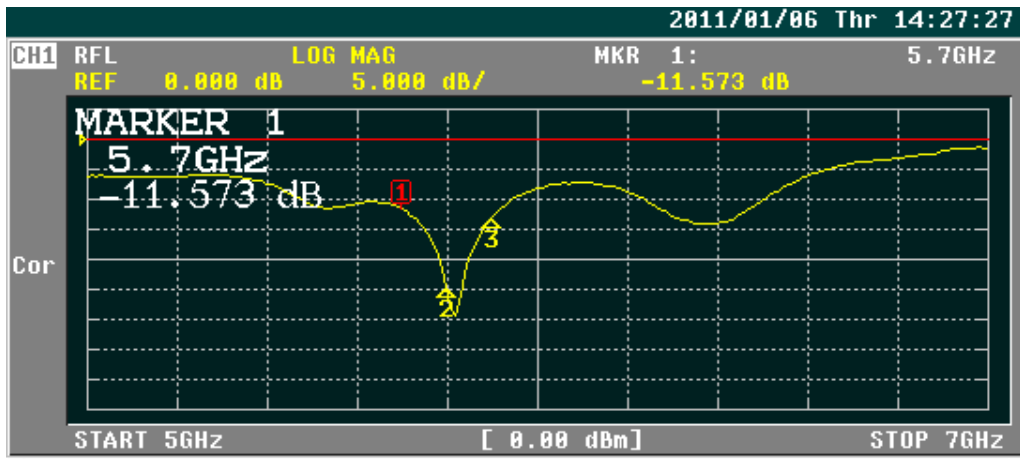


## Specifications:

<b>Frequency range:</b>	5.7~5.9Ghz
<b>Gain:</b>	0~2dBi
<b>V.S.W.R:</b>	2.0:1
<b>Impedence:</b>	50 ohm
<b>Cable:</b>	1.13 - 10cm-IPEX
<b>Dimension:</b>	44 × 20mm
<b>Weight:</b>	2g

\* This specification is subject to change without prior notice





CH1 MARKER LIST

1:	5.700 000GHz	-11.573 dB
2:	5.800 000GHz	-24.674 dB
3:	5.900 000GHz	-13.010 dB
4:		
5:		
6:		
7:		
8:		
9:		
10:		

ACTIVATE MARKER

MARKER 6

MARKER 7

MARKER 8

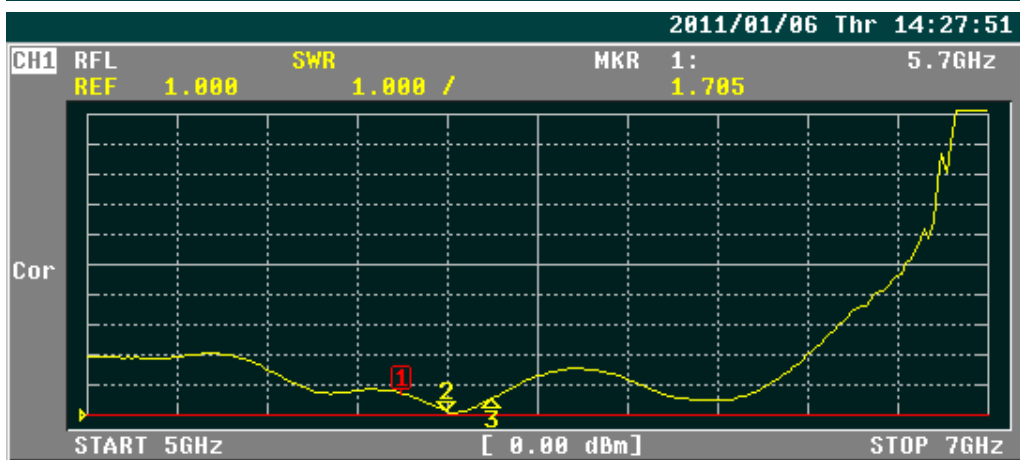
MARKER 9

MARKER 10

ACTIVATE MKR OFF

Return

More 2/2



CH1 MARKER LIST

1:	5.700 000GHz	1.785
2:	5.800 000GHz	1.114
3:	5.900 000GHz	1.579
4:		
5:		
6:		
7:		
8:		
9:		
10:		

FORMAT

SWR

REAL

IMAG

PHASE -∞ , +∞

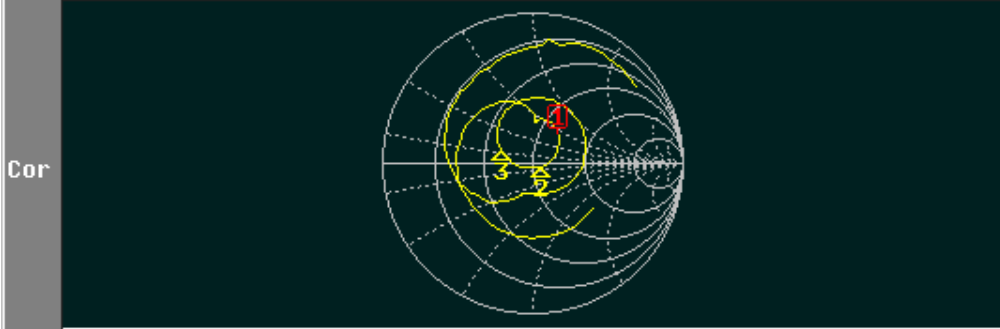
LOG MAG & PHASE

LOG MAG & DELAY

LIN MAG & PHASE

More 2/2

CH1 RFL SMITH(R+jX) MKR 1: 5.7GHz  
 FS 1.000 63.202 Ω 27.493 Ω



START 5GHz [ 0.00 dBm] STOP 7GHz

CH1 MARKER LIST

1:	5.700 000GHz	63.202 Ω	27.493 Ω	767.670pH
2:	5.800 000GHz	55.540 Ω	-2.702 Ω	10.154pF
3:	5.900 000GHz	32.443 Ω	5.627 Ω	151.814pH
4:				
5:				
6:				
7:				
8:				
9:				
10:				

FORMAT

LOG MAG <sup>1</sup>

PHASE <sup>2</sup>

DELAY <sup>3</sup>

SMITH (R+jX) <sup>4</sup>

SMITH (G+jB) <sup>5</sup>

POLAR <sup>6</sup>

LIN MAG <sup>7</sup>

More 1/2 <sup>8</sup>