

2.4G Antenna

MODEL: TH-240J



1. GENERAL DESCRIPTION

Model No
TH240J-3M-SMA(M)- Clamping-L-mounting

Below is a table summarizing the antenna design specification.

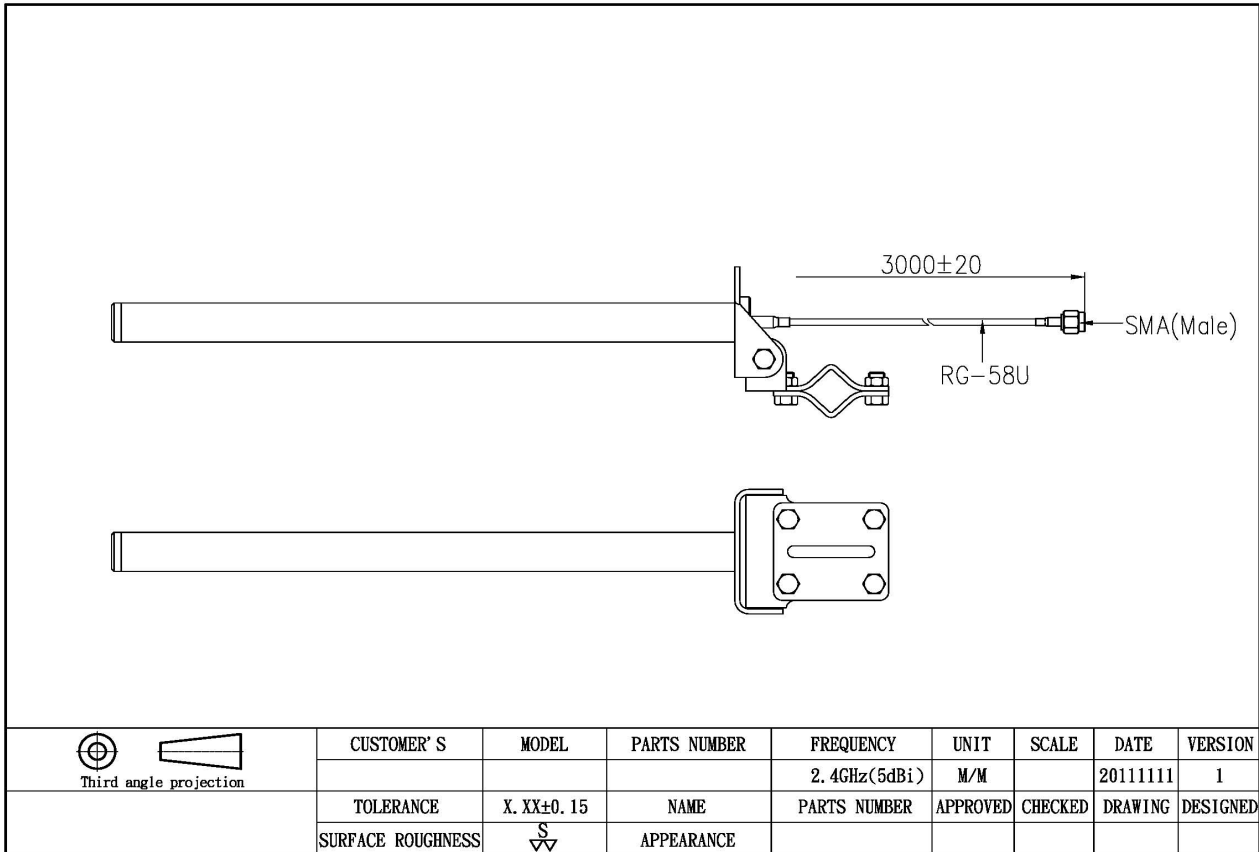
1.1 Electrical Properties

Parameter	Description
Frequency Band	2.4 GHz(5dBi)
Nominal Impedance	50 ohm
Polarization	Vertical
Return Loss	Please See Data-1
V.S.W.R	2.0:1

1.2 Mechanical Properties

Parameter	Description
Antenna Type	External Antenna
Touch Type	Screw Type
Connector Type	SMA 180°(Male)
Antenna Dimensions	255mm+/-20
Antenna Cable Total Length	RG-58 /U 3000 mm ± 20
Antenna Color	Black
Operating Temperature Range	-20°C~+60°C
Storage Temperature Range	-30°C~+70°C

2. Appearance



3. Frequency

