

GSM Antenna

MODEL: TH-81(T)

GSM850/GSM900/DCS1800/PCS1900/3G 2170



1.. GENERAL DESCRIPTION

Model No	P/N
TH81(T)	TH81T-SMA(M) or TH81T-FME(F)

Below is a table summarizing the antenna design specification.

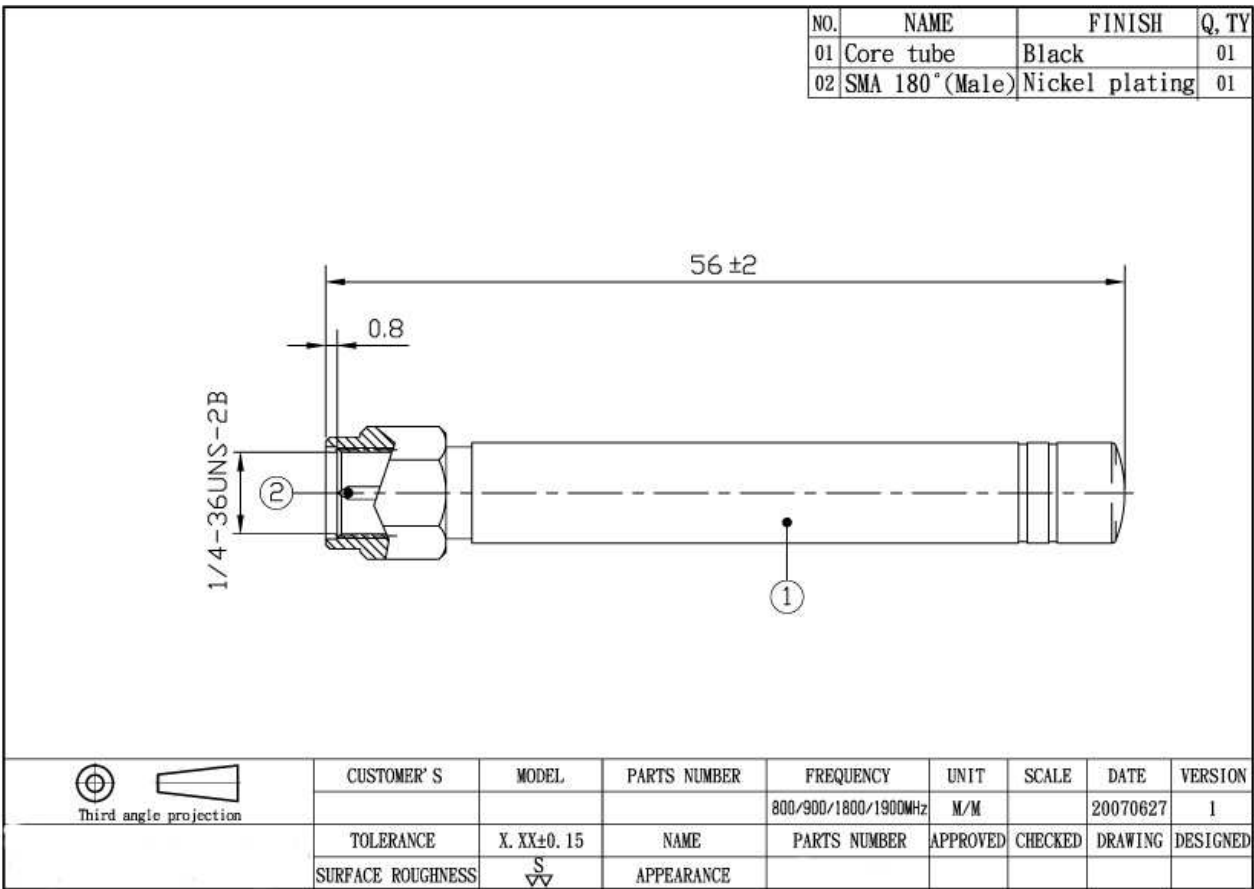
1.1 Electrical Properties

Parameter	Description
Frequency Band	800/900/1800/1900/2170MHz
Nominal Impedance	50 ohm
Polarization	Vertical
Electrical Wave	1 /4 λ
Admitted Power radiation	1W
V.S.W.R	2.5:1
Antenna Average Gain	0 dBi
Note: Gain includes the cable loss	

1.2 Mechanical Properties

Parameter	Description
Antenna Type	External Antenna

Material	PVC
Touch Type	Screw Type
Connector Type	SMA 180° (Male)
Antenna Dimensions	SMA : 56mm±2 ; FME: 64mm
Antenna Color	Black
Operating Temperature Range	-20°C~+60°C
Storage Temperature Range	-30°C~+70°C





MS4231

MODEL:
DEVICE ID:

DATE: 02/25/09
OPERATOR:

09:51 Page 1

START: 0.010000000 GHz GATE START: -
STOP: 3.000000000 GHz GATE STOP: -
STEP: 0.007475000 GHz GATE: -
WINDOW: -

ERROR CORR: REFL PORT1
AVERAGING: 1 PT
IF BANDWIDTH: 1 KHz

-----CH1-----
PARAMETER: -S11-
NORMALIZATION: OFF
REFERENCE PLANE: 0.0000 mm
SMOOTHING: 0.0 PERCENT
DELAY APERTURE: -

