

# GSM Antenna

**MODEL: TH-81**

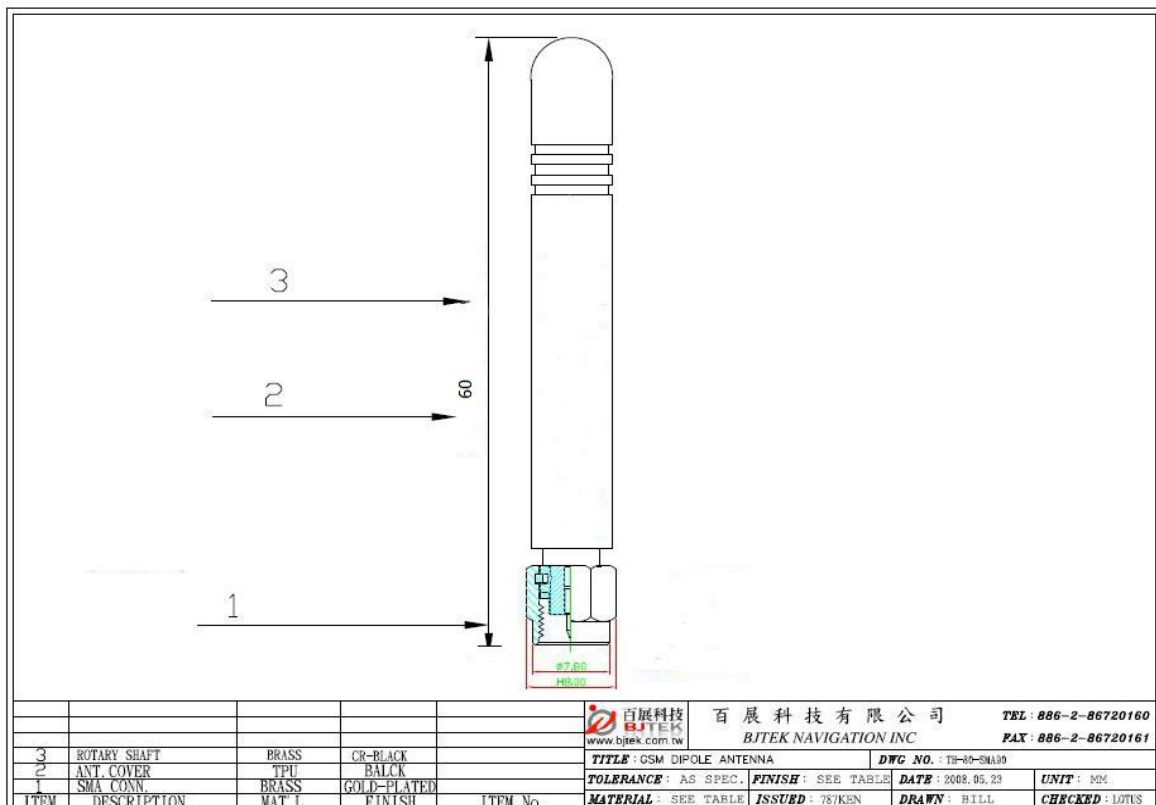
GSM850/GSM900/DCS1800/PCS1900



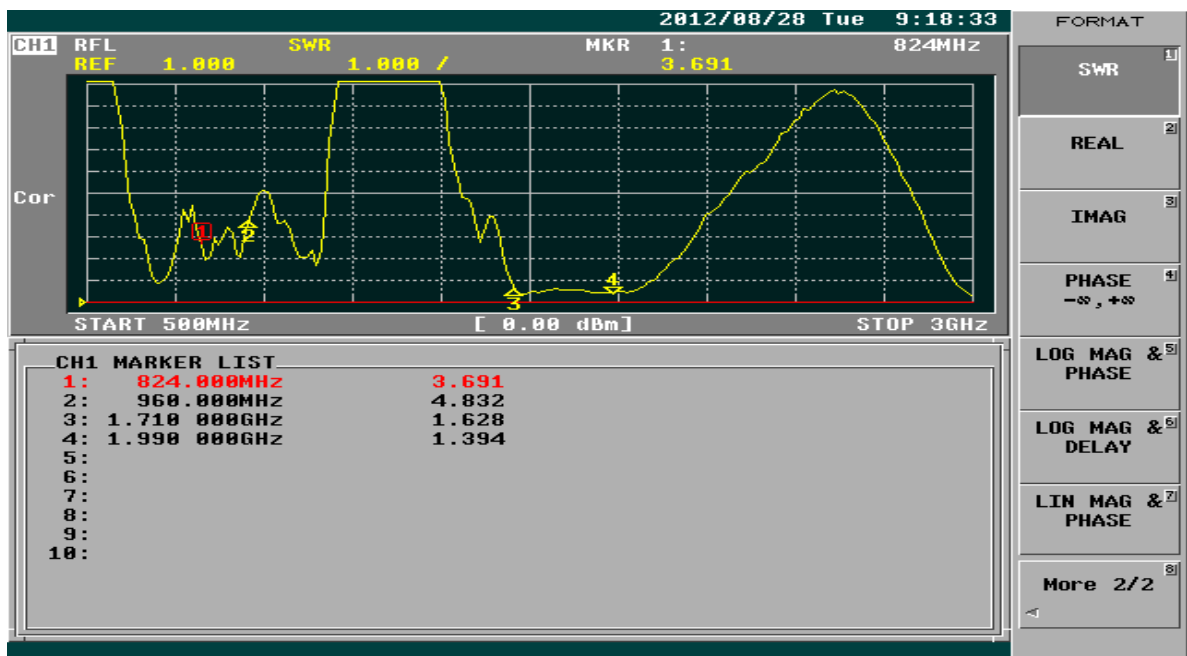
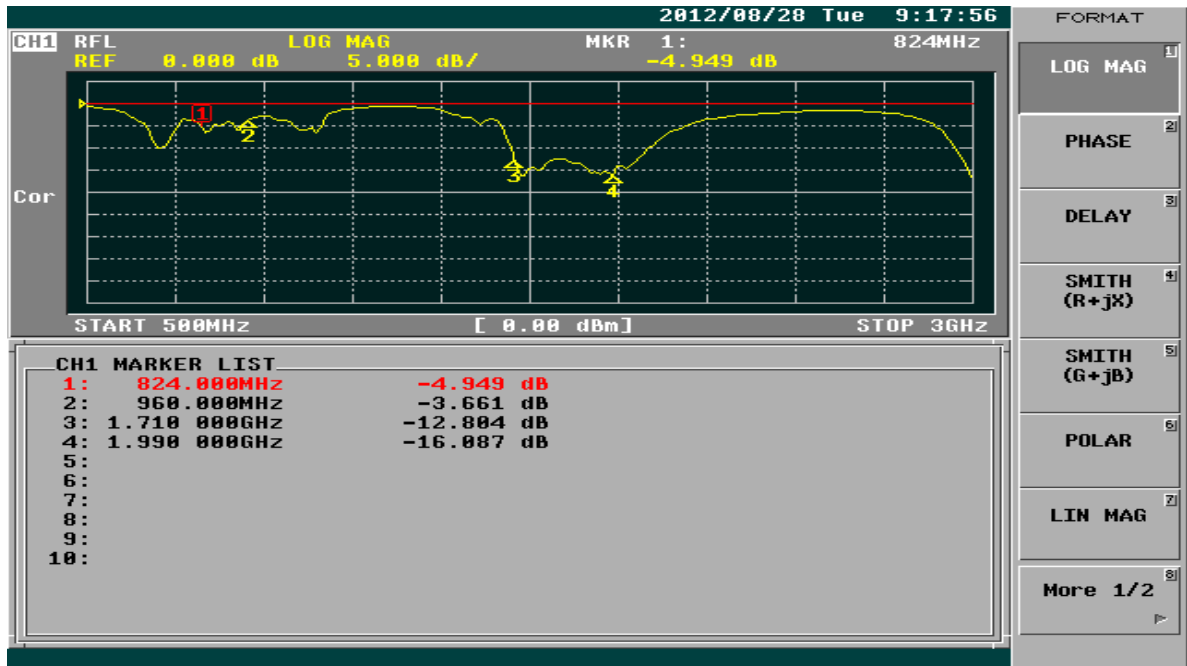
## Specifications:

Frequency range:	824-960/1710-1990Mhz
Gain:	0 dB
V.S.W.R:	3.0:1 (on gnd )
Impedence:	50 ohm
Connector:	SMA(P)
Dimension:	9.1(Dia.) × 60(H) mm
Weight:	>3g (With Connector)

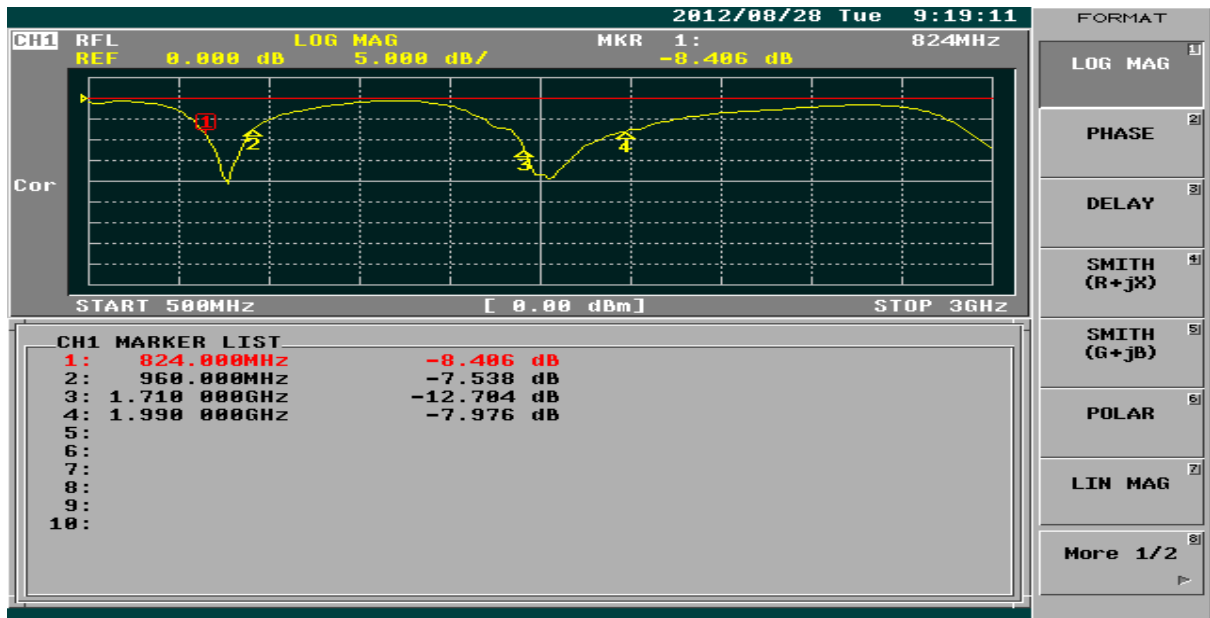
\* This specification is subject to change without prior notice

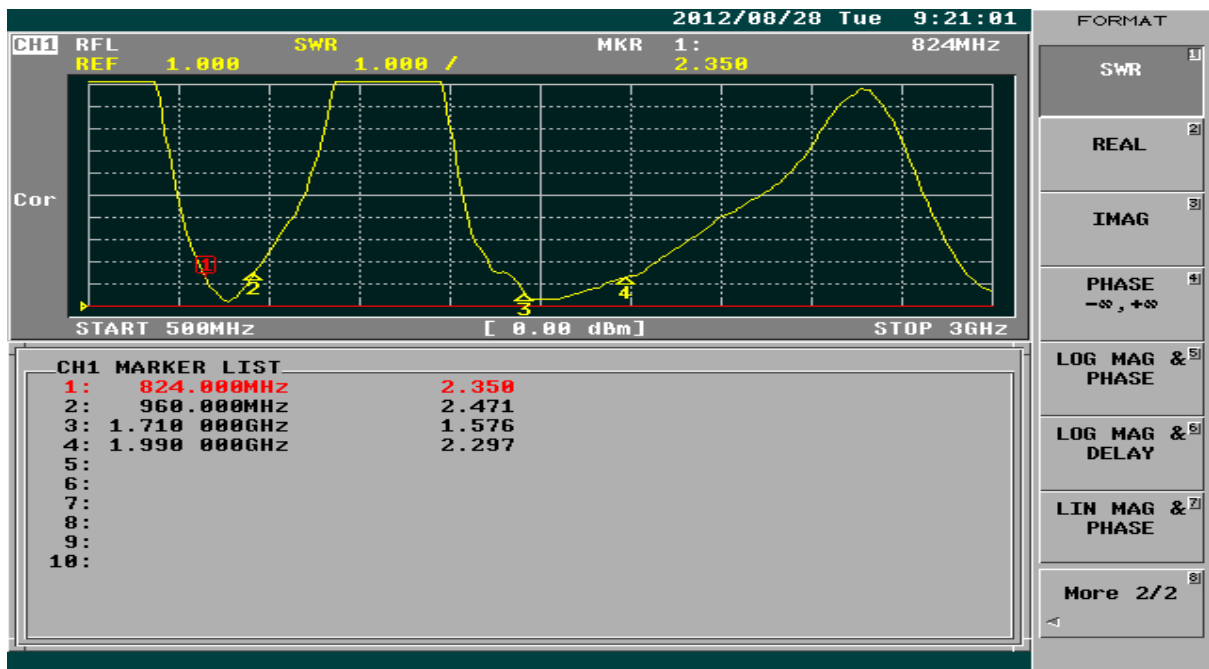


**NO GND TEST :**



**ON GND TEST :**





		Frequency (MHz)				
VSWR		824MHz	960MHz	1710MHz	1880MHz	1990MHz
Value		≤ 3.0	≤ 3.0	≤ 3.0	≤ 3.0	≤ 3.0

Frequency (MHz)	H Plane			E1 Plane			E1 Plane			
	Unit dBi	Max.	Min.	Max.	Min.	Avg.	Avg.	Min.	Avg.	Avg.
824		1.51	-14.40	-1.91	0.89	-21.36	-2.91	2.01	-1.04	1.02
880		0.44	-11.22	-3.21	-0.10	-26.10	-3.84	2.28	-3.27	0.58
960		-2.13	-15.38	-5.65	-2.27	-28.18	-6.18	0.56	-4.79	-1.42
1710		1.19	-9.39	-2.06	1.39	-21.31	-3.09	1.62	-4.20	-0.69
1800		3.09	-8.52	-0.80	2.54	-21.24	-2.34	1.93	-3.03	0.07
1880		1.97	-9.86	-1.58	1.21	-19.88	-2.73	0.72	-4.05	-1.51
1990		-0.21	-11.94	-3.26	0.60	-19.80	-3.22	0.04	-3.88	-1.35

