

Heavy Duty Screw Mount GSM Antenna

MODEL: TH-260C



1. GENERAL DESCRIPTION

Model No
TH260C-RG178-60CM-MMCX180(M)

Below is a table summarizing the antenna design specification.

1.1 Electrical Properties

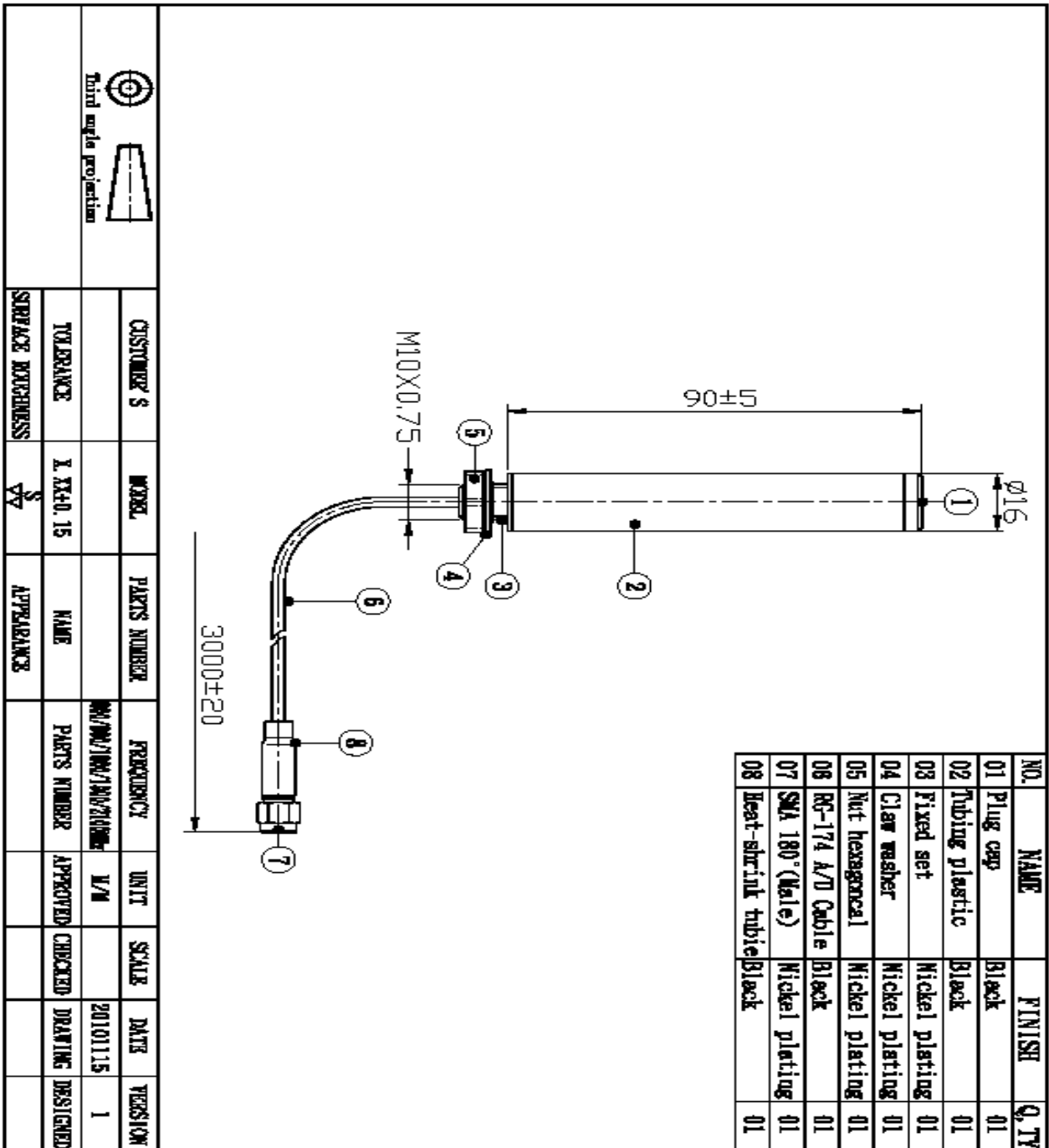
Parameter	Description
Frequency Band	824~960/1710~1990/1990~2170Mhz
Nominal Impedance	50 ohm
Polarization	Vertical
Return Loss	Please See Data-1
V.S.W.R	2.5 : 1
Gain	0~3db
Note: Gain includes the cable loss	

1.2 Mechanical Properties

Parameter	Description
Antenna Type	External Antenna

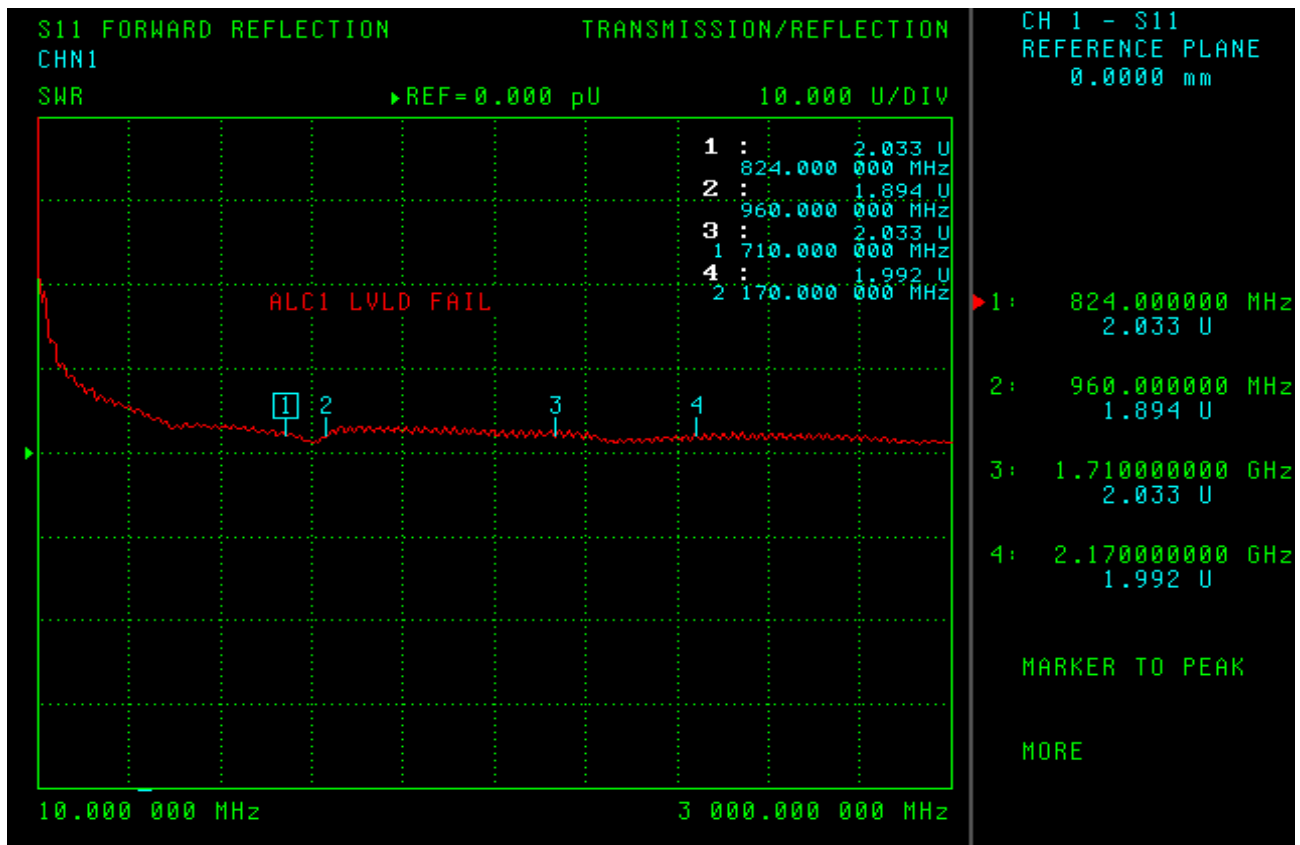
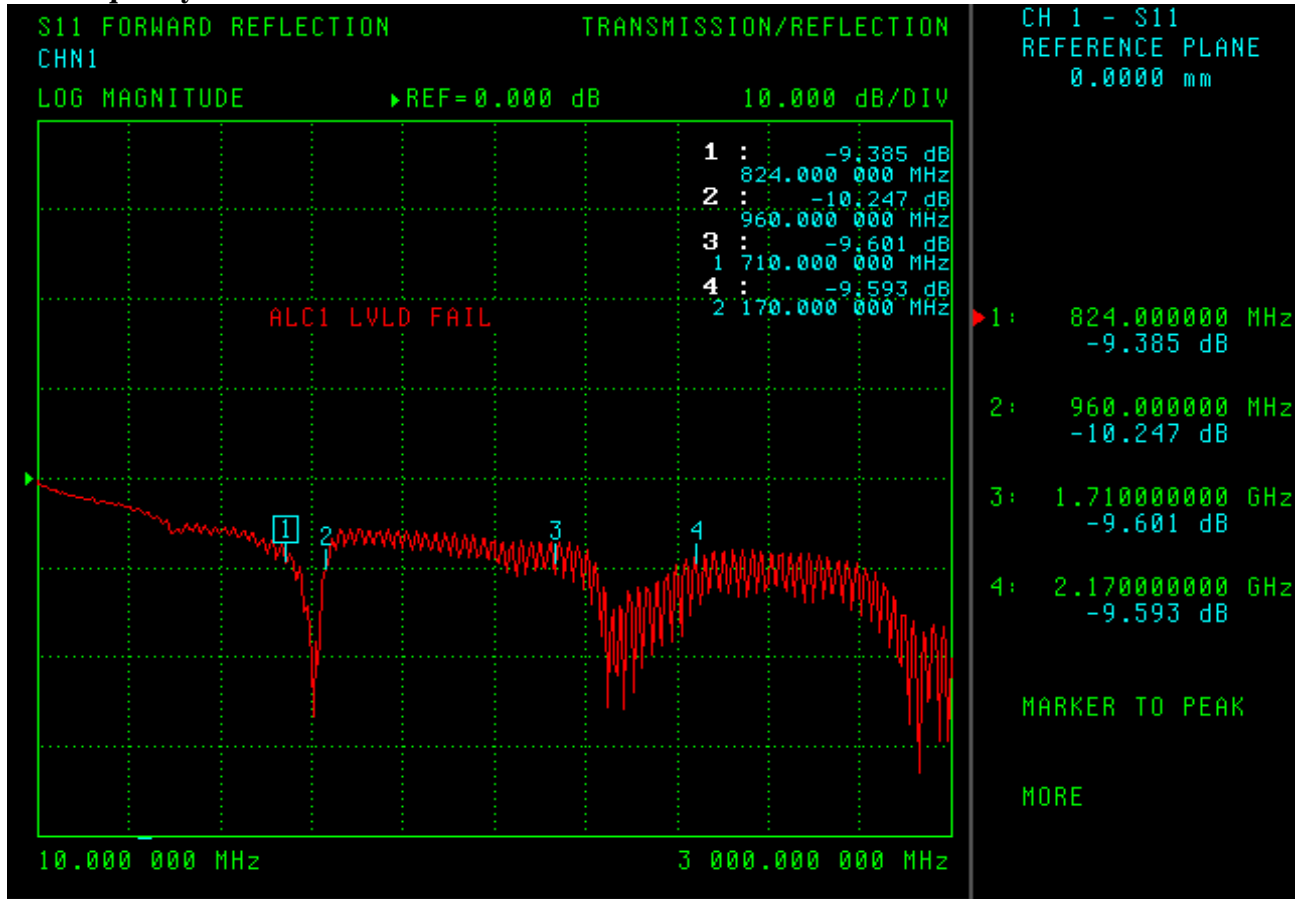
Antenna Material	Tubing plastic
Touch Type	Screw Type M10 x0.75
Connector Type	MMCX 180° (Male) or SMA (Male)
Antenna Dimensions	Φ16x90mm ±5
Antenna Color	Black
Operating Temperature Range	-20°C~+60°C
Storage Temperature Range	-30°C~+70°C

2. Appearance



 Third angle projection		CUSTOMER'S	MODEL	PARTS NUMBER	FREQUENCY	UNIT	SCALE	DATE	VERSION
TOLERANCE	1:1X0.15	NAME						20101115	1
SURFACE ROUGHNESS	\sqrt{R}	APPEARANCE							

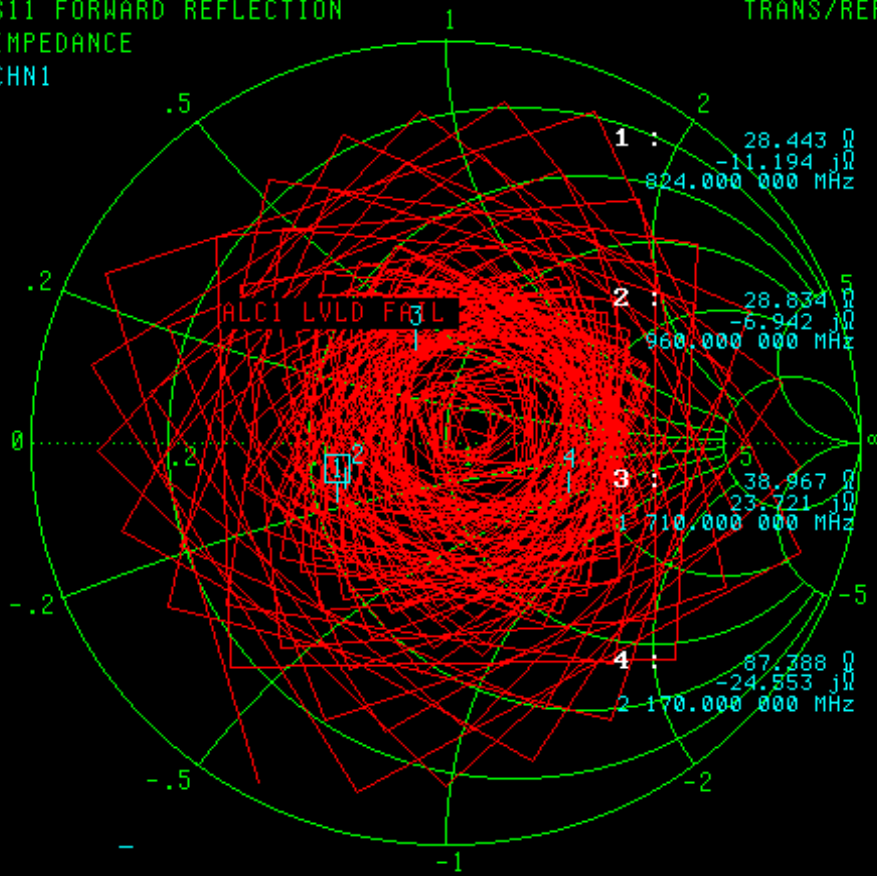
3. Frequency



S11 FORWARD REFLECTION
IMPEDANCE
CHN1

TRANS/REFL

CH 1 - S11
REFERENCE PLANE
0.0000 mm



1 : 28.443 Ω
-11.194 $j\Omega$
824.000 000 MHz

2 : 28.834 Ω
-6.942 $j\Omega$
960.000 000 MHz

3 : 38.967 Ω
23.721 $j\Omega$
1 710.000 000 MHz

4 : 87.388 Ω
-24.553 $j\Omega$
2 170.000 000 MHz

1 : 824.000000 MHz
28.443 Ω
-11.194 $j\Omega$

2 : 960.000000 MHz
28.834 Ω
-6.942 $j\Omega$

3 : 1.71000000 GHz
38.967 Ω
23.721 $j\Omega$

4 : 2.17000000 GHz
87.388 Ω
-24.553 $j\Omega$

MARKER TO PEAK

MORE

10.000 000 MHz - 3 000.000 000 MHz