

CAR GSM Antenna

MODEL: TC-821

Inside Glass Antenna 850/900/1800/1900/2170 MHz



1. GENERAL DESCRIPTION

Model No	P/N
	TC-821

Below is a table summarizing the antenna design specification.

1.1 Electrical Properties

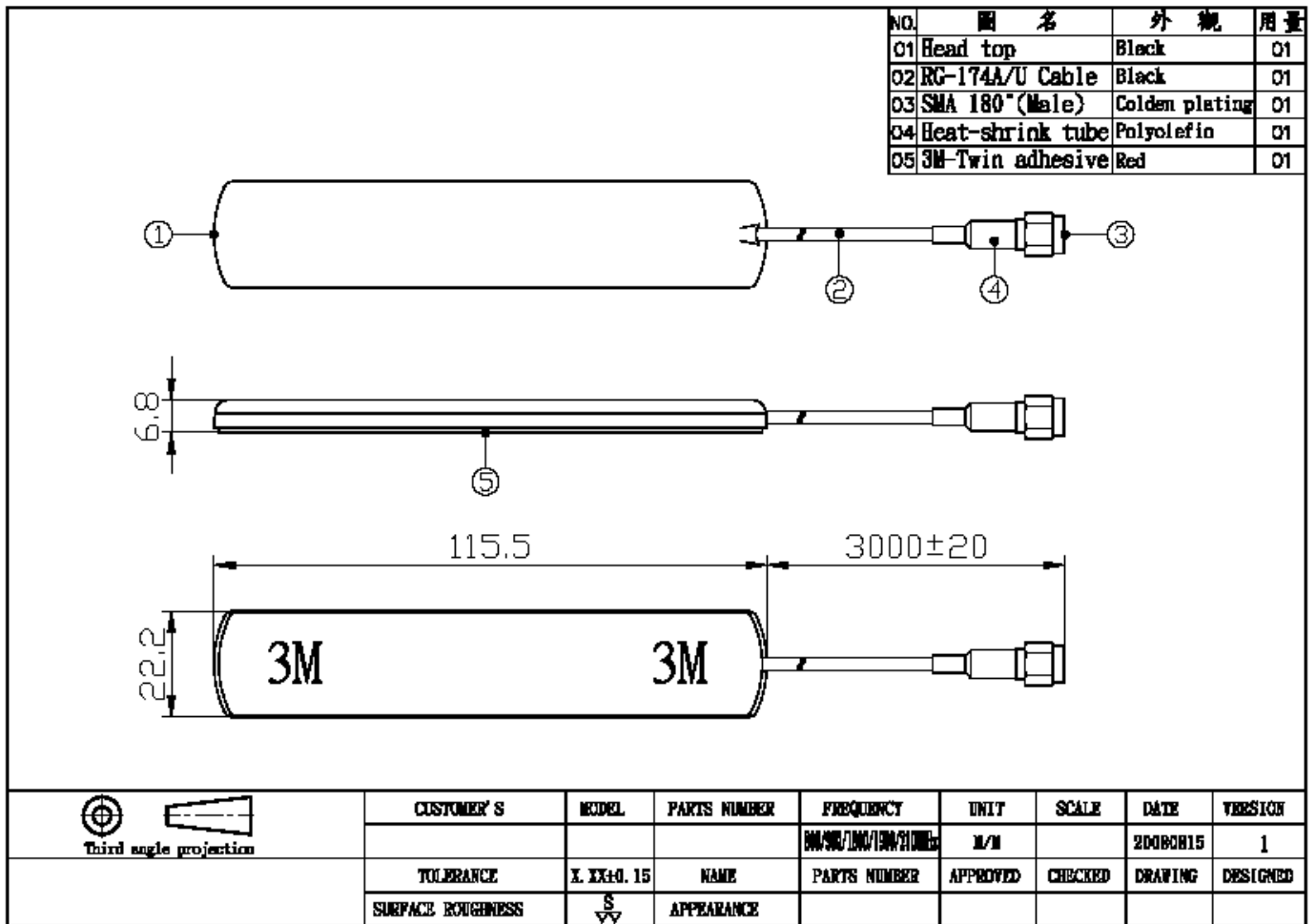
Parameter	Description
Frequency Band	824~960/ 1710~1990/1990~2170MHz
Nominal Impedance	50 ohm
Polarization	Vertical
Electrical Wave	1 / 2 λ Dipole
V.S.W.R	2.0:1
Antenna Average Gain	0~3.0dBi
Note: Gain includes the cable loss	

1.2 Mechanical Properties

Parameter	Description
-----------	-------------

Antenna Material	ABS
Connector Type	SMA 180° male
Antenna Dimensions	115 mm ± 5
Antenna Cable Total Length	3000mm ± 20
Antenna Color	Black
Operating Temperature Range	-20°C~+60°C
Storage Temperature Range	-30°C~+70°C

2.Appearance



3. FREQUENCY

