

CAR GSM ANTENNA

MODEL: TC-820

Inside Glass Antenna

Five Band 800/900/1800/1900/2170MHz



1. GENERAL DESCRIPTION

Model No	P/N
TC820	TC820-3M-SMA-M

Below is a table summarizing the antenna design specification.

1.2 Electrical Properties

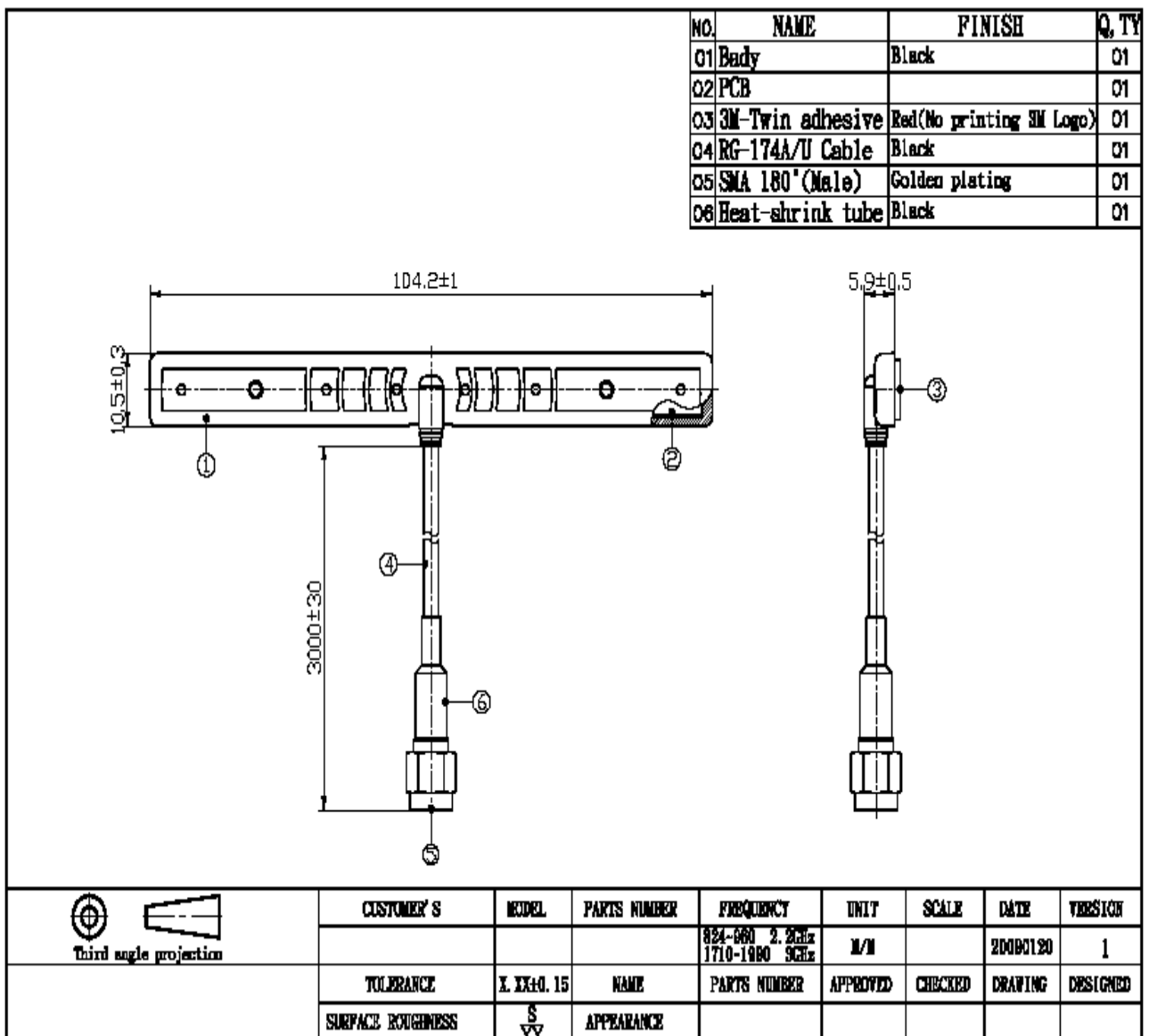
Parameter	Description
Frequency Band	800/900/1800/1900/2170 Mhz
Nominal Impedance	50 ohm
Polarization	Vertical
Electrical Wave	$1/2 \lambda$ Dipole
Return Loss	
V.S.W.R	2.3:1
Antenna Average Gain	3.0dBi
Note: Gain includes the cable loss	

1.2 Mechanical Properties

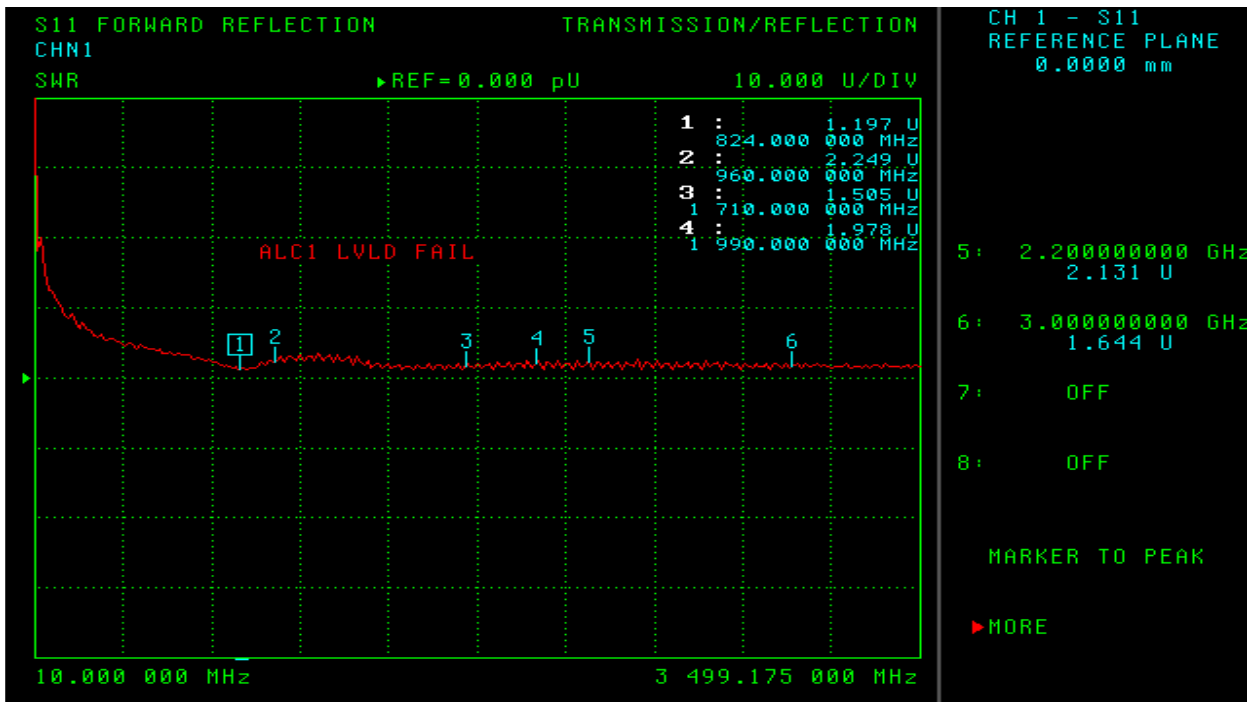
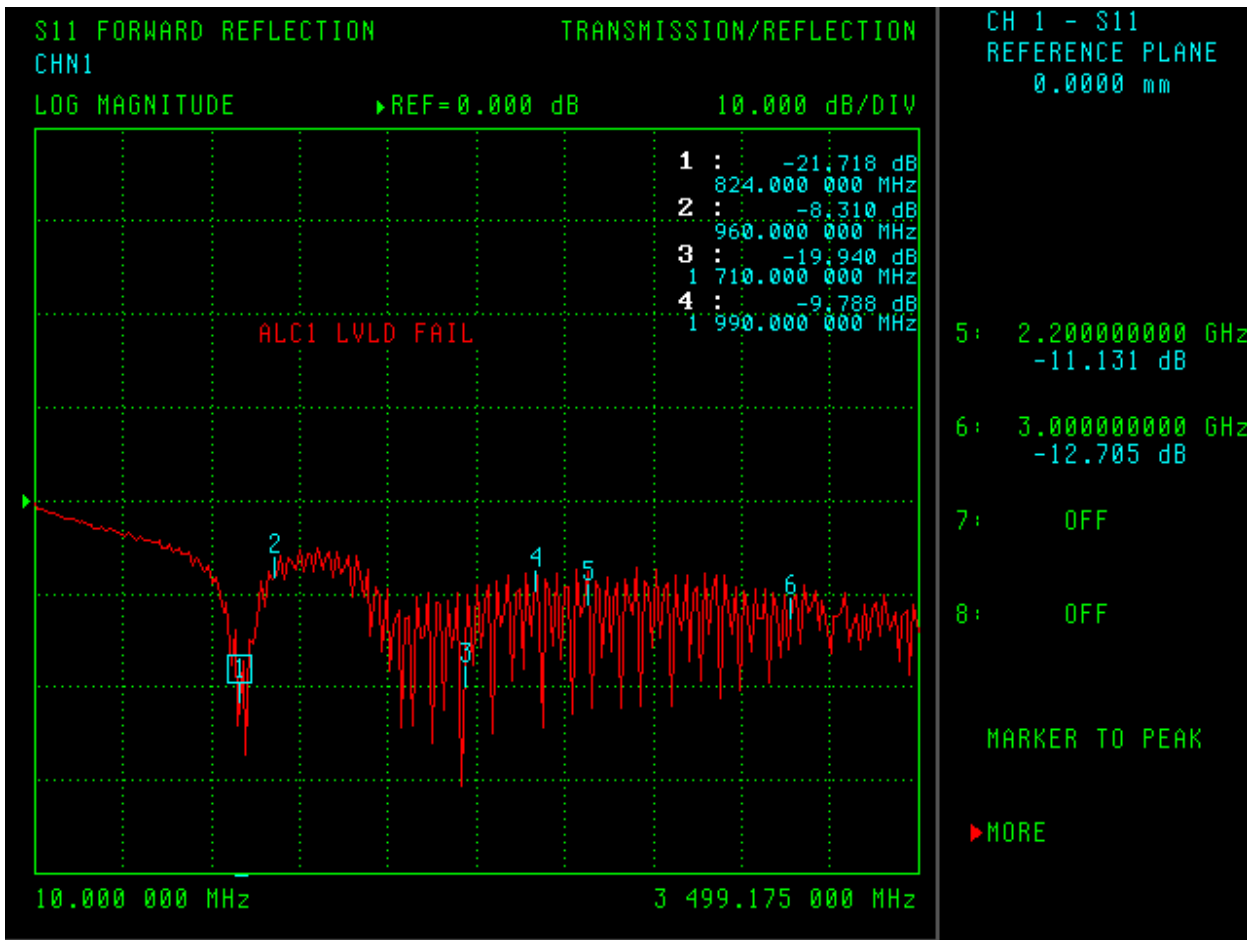
Parameter	Description
Antenna Type	Inside Glass Antenna

Antenna Material	TPR
Touch Type	3M stick cloth Type (no logo)
Connector Type	SMA-Type
Antenna Dimensions	104.2 mm ± 1
Antenna Cable Total Length	2500mm ± 10
Antenna Color	Black
Operating Temperature Range	-20°C~+60°C
Storage Temperature Range	-30°C~+70°C

2. Appearance



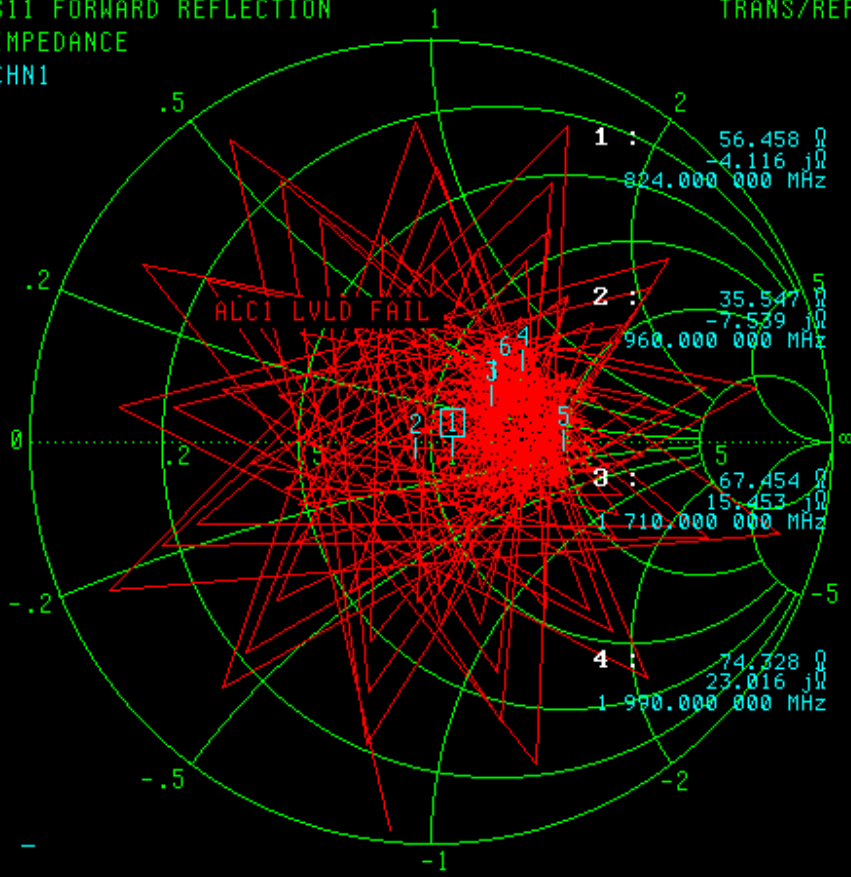
3. FREQUENCY



S11 FORWARD REFLECTION
IMPEDANCE
CHN1

TRANS/REFL

CH 1 - S11
REFERENCE PLANE
0.0000 mm



1 : 56.458 Ω
-4.116 jΩ
824.000 000 MHz

2 : 35.547 Ω
-7.539 jΩ
960.000 000 MHz

3 : 67.454 Ω
15.453 jΩ
1 710.000 000 MHz

4 : 74.328 Ω
23.016 jΩ
1 990.000 000 MHz

- 5: 2.200000000 GHz
106.113 Ω
-5.427 jΩ
- 6: 3.000000000 GHz
63.436 Ω
19.598 jΩ
- 7: OFF
- 8: OFF

MARKER TO PEAK

▶ MORE

10.000 000 MHz - 3 499.175 000 MHz