

CAR SIX Band Antenna

MODEL: MA-90A



1. GENERAL DESCRIPTION

Model No	P/N
	MA90A

Below is a table summarizing the antenna design specification.

1.1 Electrical Properties

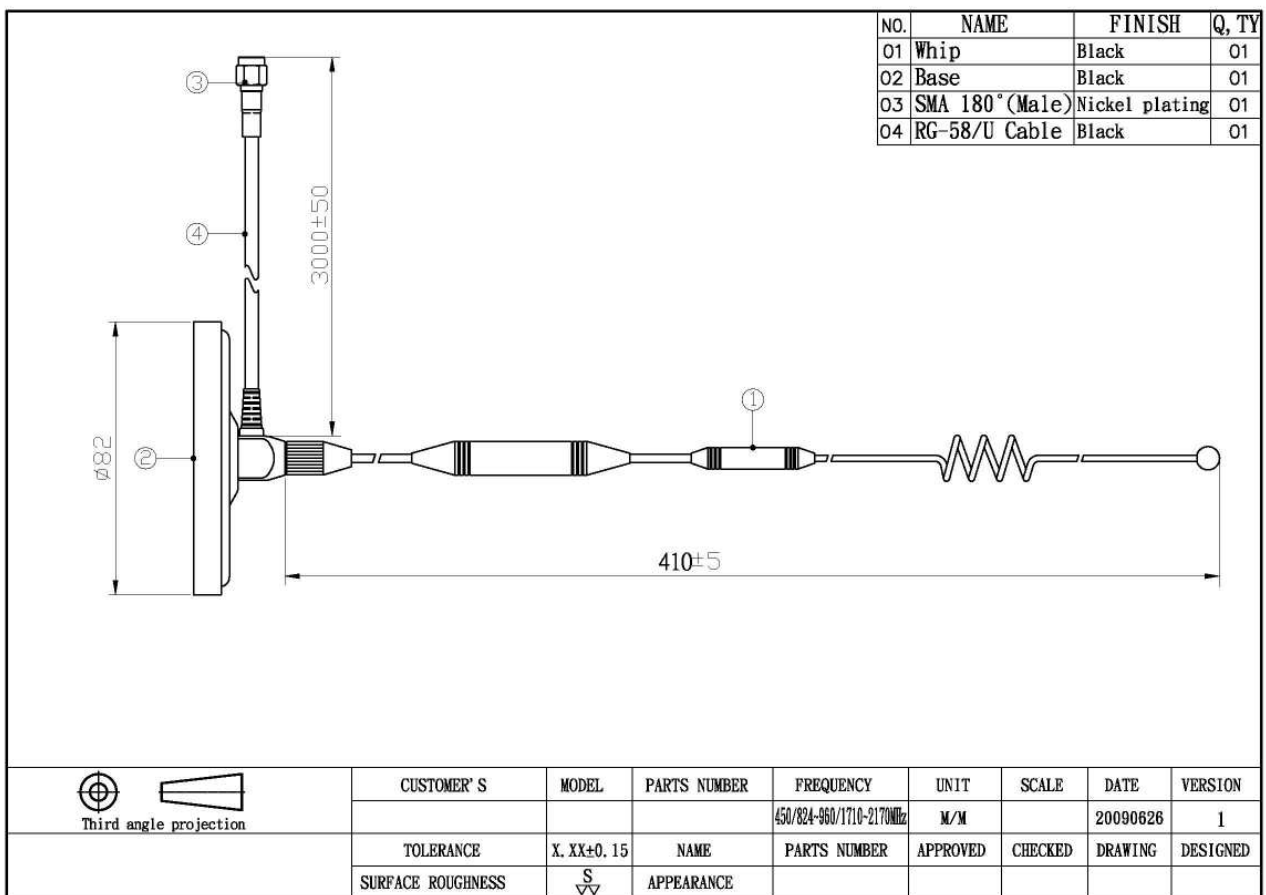
Parameter	Description
Frequency Band	450/850/900/1800/1900/2170MHz
Nominal Impedance	50 ohm
Polarization	Vertical
Return Loss	Please See Data-1
V.S.W.R	2.0 : 1
Antenna Average Gain	9dbi
Note: Gain includes the cable loss	

1.2 Mechanical Properties

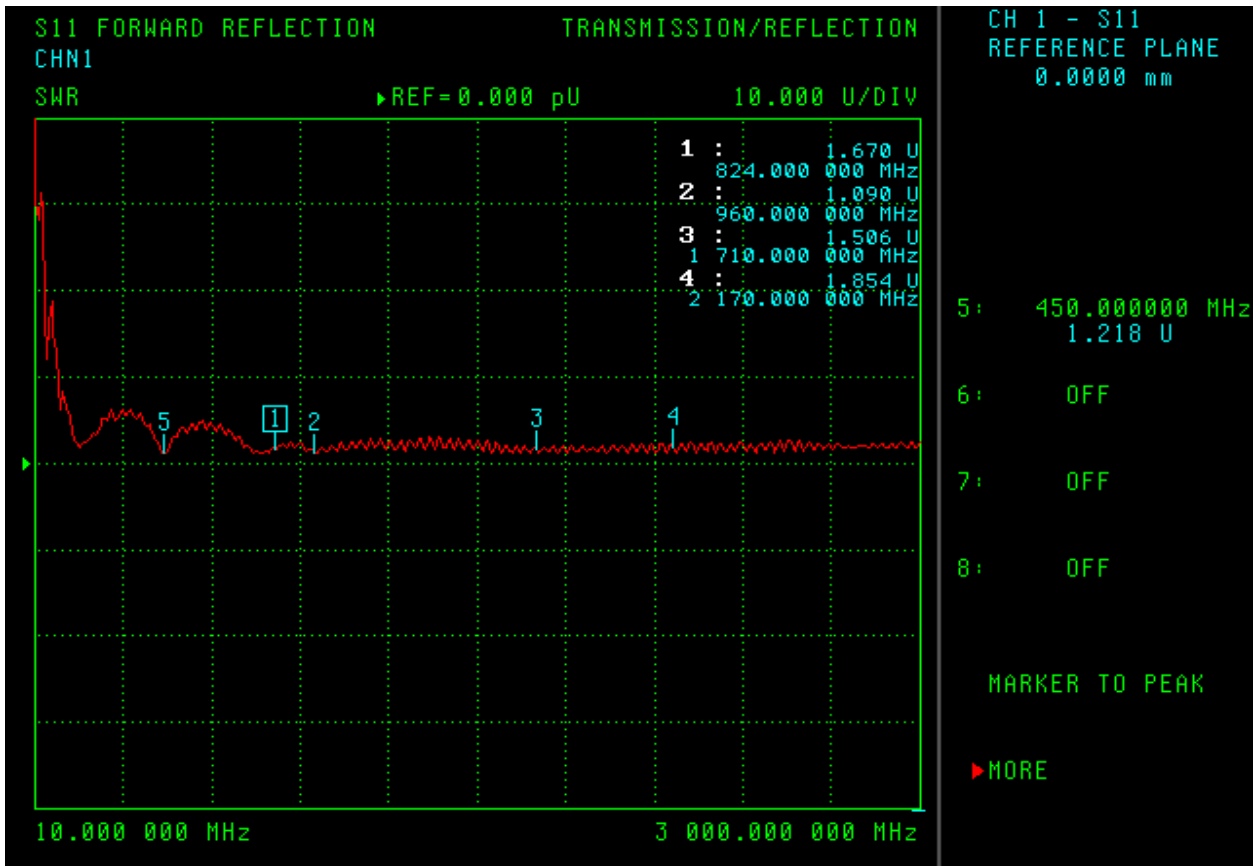
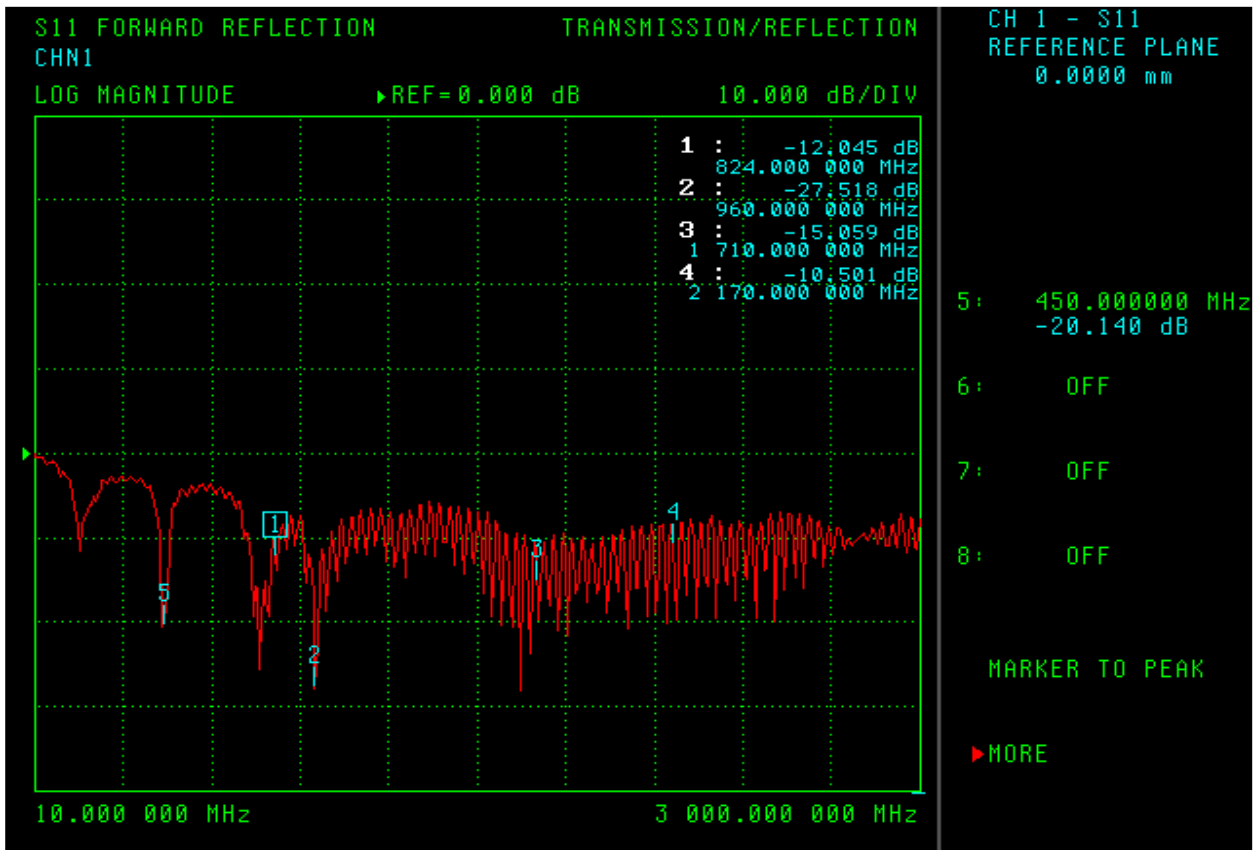
Parameter	Description
Antenna Type	External Antenna

Touch Type	Screw Type
Connector Type	SMA 180° (Male)
Antenna Dimensions	410 mm ± 5
Antenna Cable Total Length	RG-58/U / 3000MM ±50
Antenna Color	Black
Operating Temperature Range	-20°C~+60°C
Storage Temperature Range	-30°C~+70°C

2. Appearance



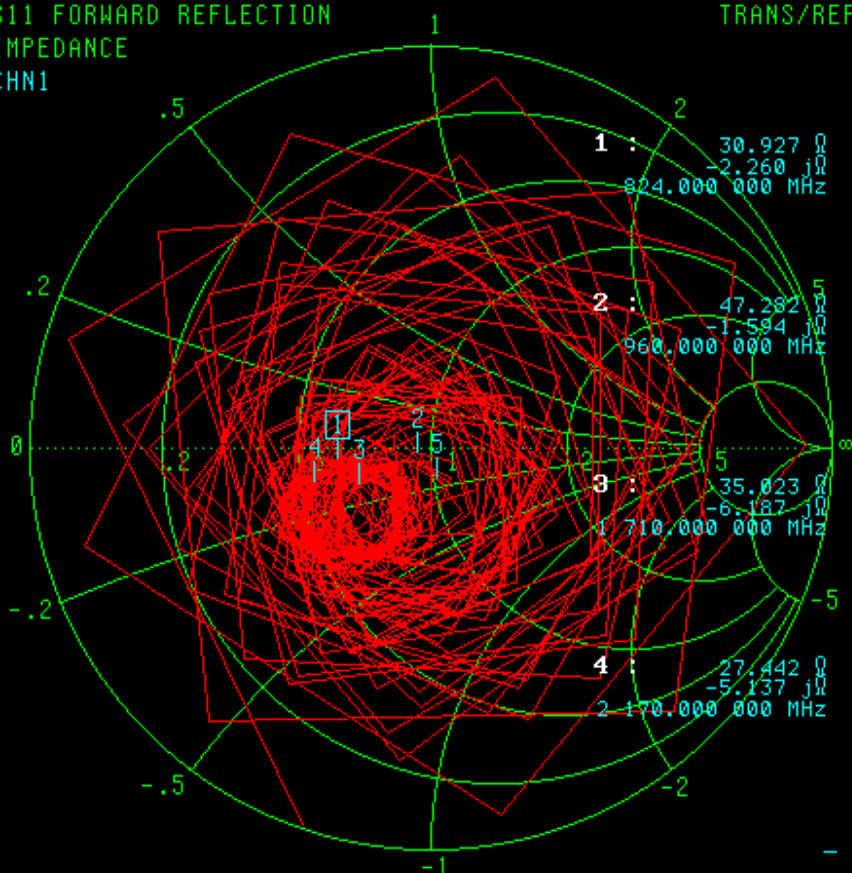
3. Frequency



S11 FORWARD REFLECTION
IMPEDANCE
CHN1

TRANS/REFL

CH 1 - S11
REFERENCE PLANE
0.0000 mm



10.000 000 MHz - 3 000.000 000 MHz

5: 450.000000 MHz
51.151 Ω
-8.185 $j\Omega$
6: OFF
7: OFF
8: OFF

MARKER TO PEAK

▶ MORE