

Drills a hole fixed GSM Antenna

Model : GSM-60



1. GENERAL DESCRIPTION

Model No
GSM60-3M-SMA(M)

Below is a table summarizing the antenna design specification.

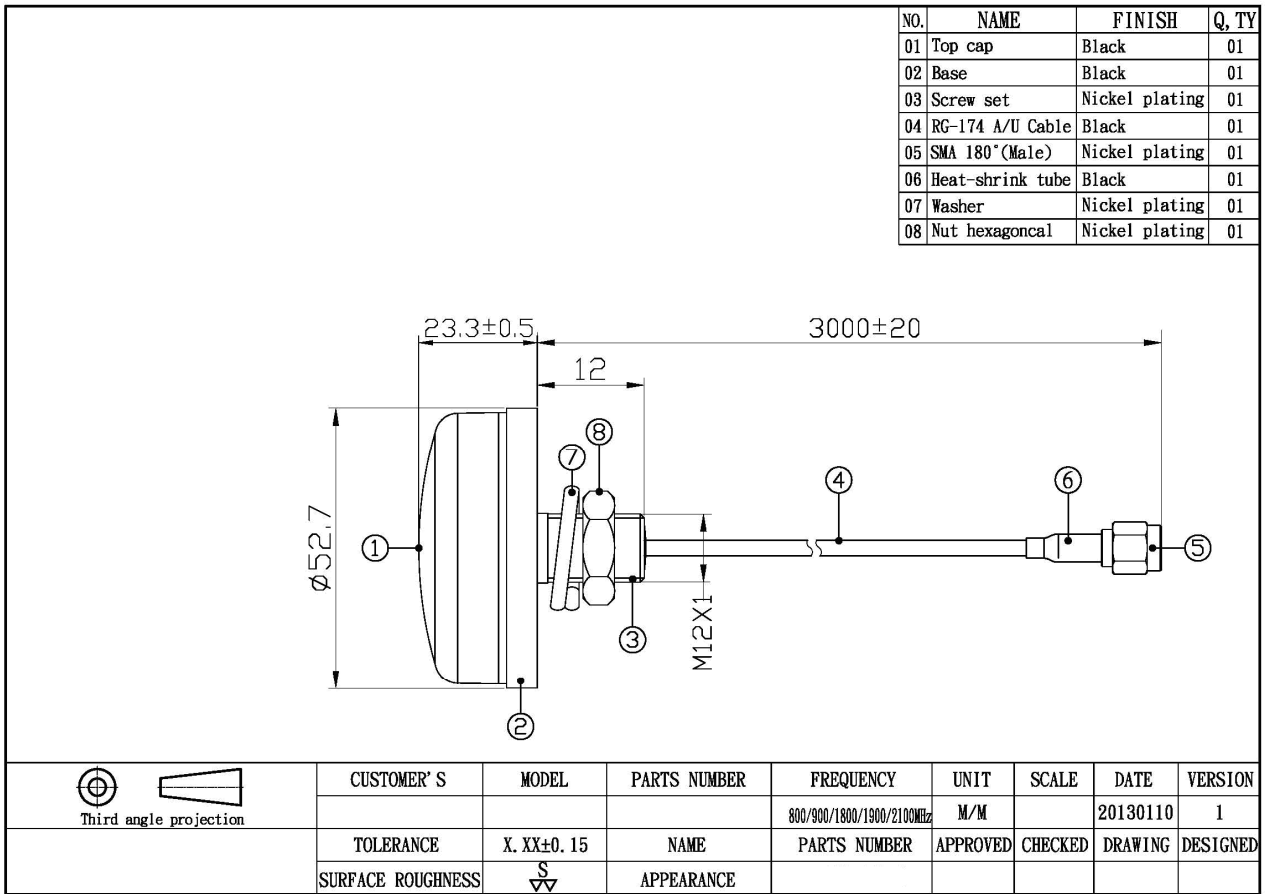
1.1 Electrical Properties

Parameter	Description
Frequency Band	800/900/1800/1900/2100MHz
Nominal Impedance	50 ohm
V.S.W.R	2.0:1

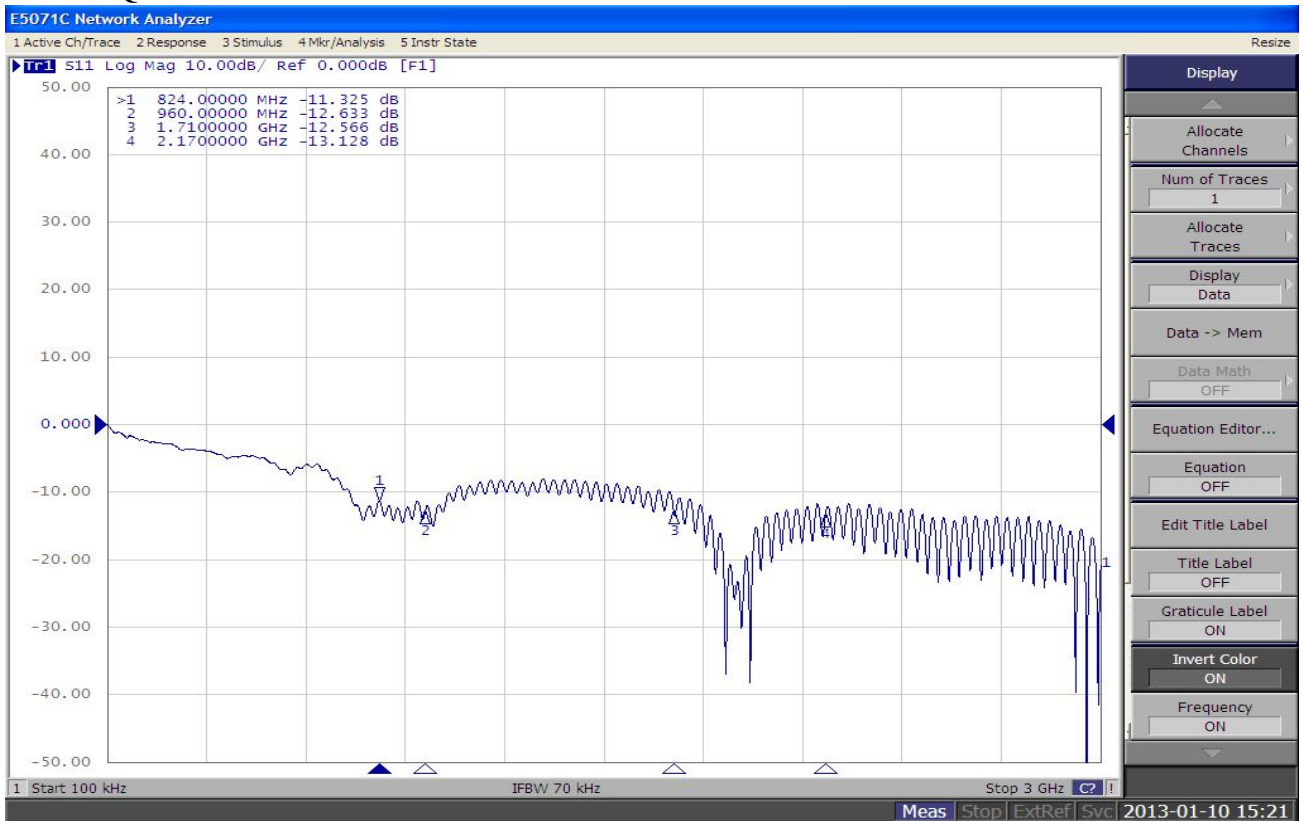
1.2 Mechanical Properties

Parameter	Description
Connector Type	SMA 180 ° (Male)
Antenna Dimensions	3000 mm \pm 20
Antenna Cable Total Length	RG-174/AU
Antenna Color	Black
Operating Temperature Range	-30°C~+70°C
Storage Temperature Range	-40°C~+80°C

2. Appearance



3. FREQUENCY

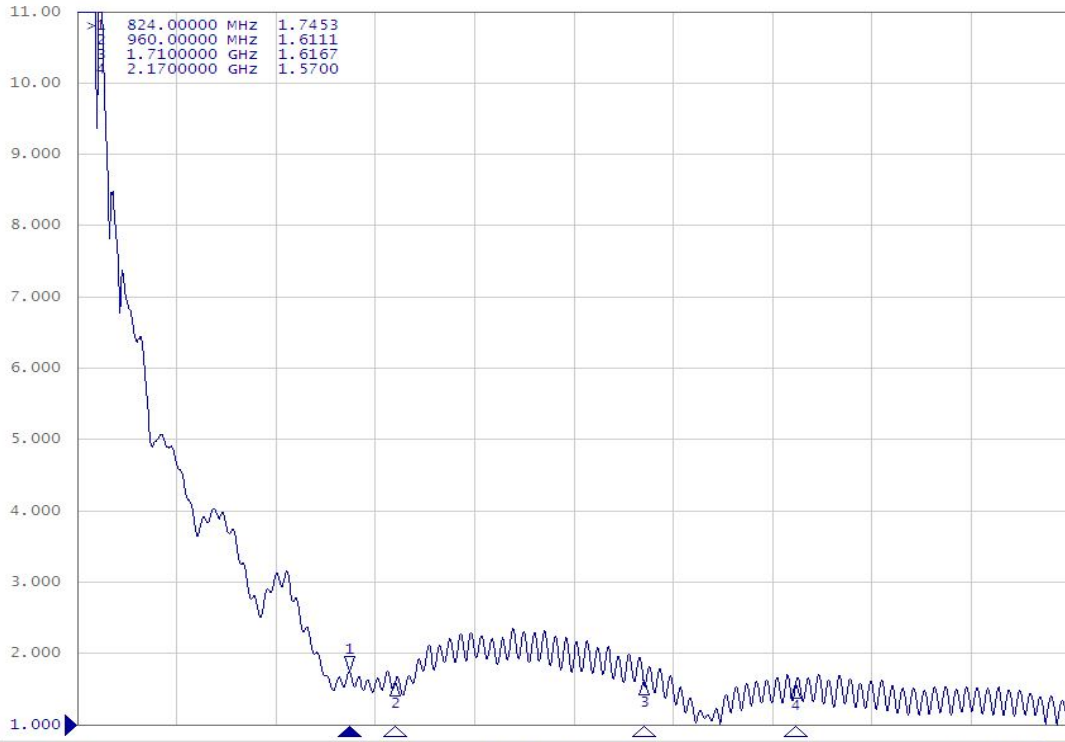


E5071C Network Analyzer

1 Active Ch/Trace 2 Response 3 Stimulus 4 Mkr/Analysis 5 Instr State

Resize

► Tr1 S11 SwR 1.000/ Ref 1.000 [F1]



- Format
- SWR
- Log Mag
- Phase
- Group Delay
- Smith
- Polar
- Lin Mag
- SWR
- Real
- Imaginary
- Expand Phase
- Positive Phase
- Return

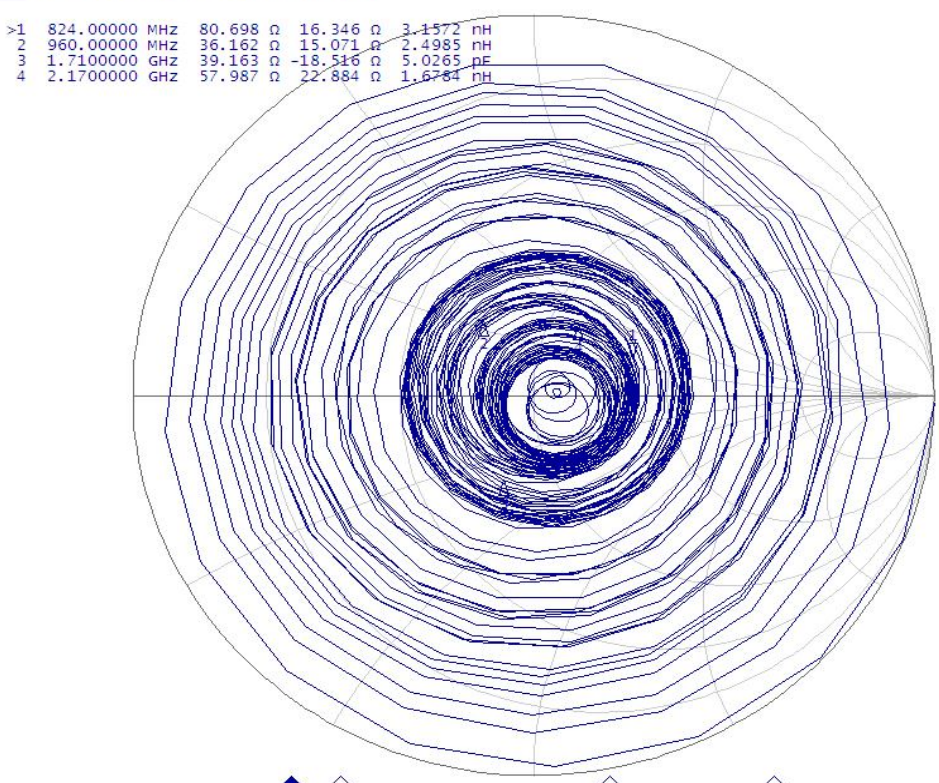
1 Start 100 kHz IFBW 70 kHz Stop 3 GHz Meas Stop ExtRef Svc 2013-01-10 15:22

E5071C Network Analyzer

1 Active Ch/Trace 2 Response 3 Stimulus 4 Mkr/Analysis 5 Instr State

Resize

► Tr1 S11 Smith (R+jX) Scale 1.000U [F1]



- Format
- Smith (R+jX)
- Log Mag
- Phase
- Group Delay
- Smith R + jX
- Polar
- Lin Mag
- SWR
- Real
- Imaginary
- Expand Phase
- Positive Phase
- Return

1 Start 100 kHz IFBW 70 kHz Stop 3 GHz Meas Stop ExtRef Svc 2013-01-10 15:22