

Heavy Duty Screw Mount 2.4G & 5.8G Antenna

MODEL: TH-240D



1. GENERAL DESCRIPTION

Model No
TH240C-RG178-60CM-MMCX180(M)

Below is a table summarizing the antenna design specification.

1.1 Electrical Properties

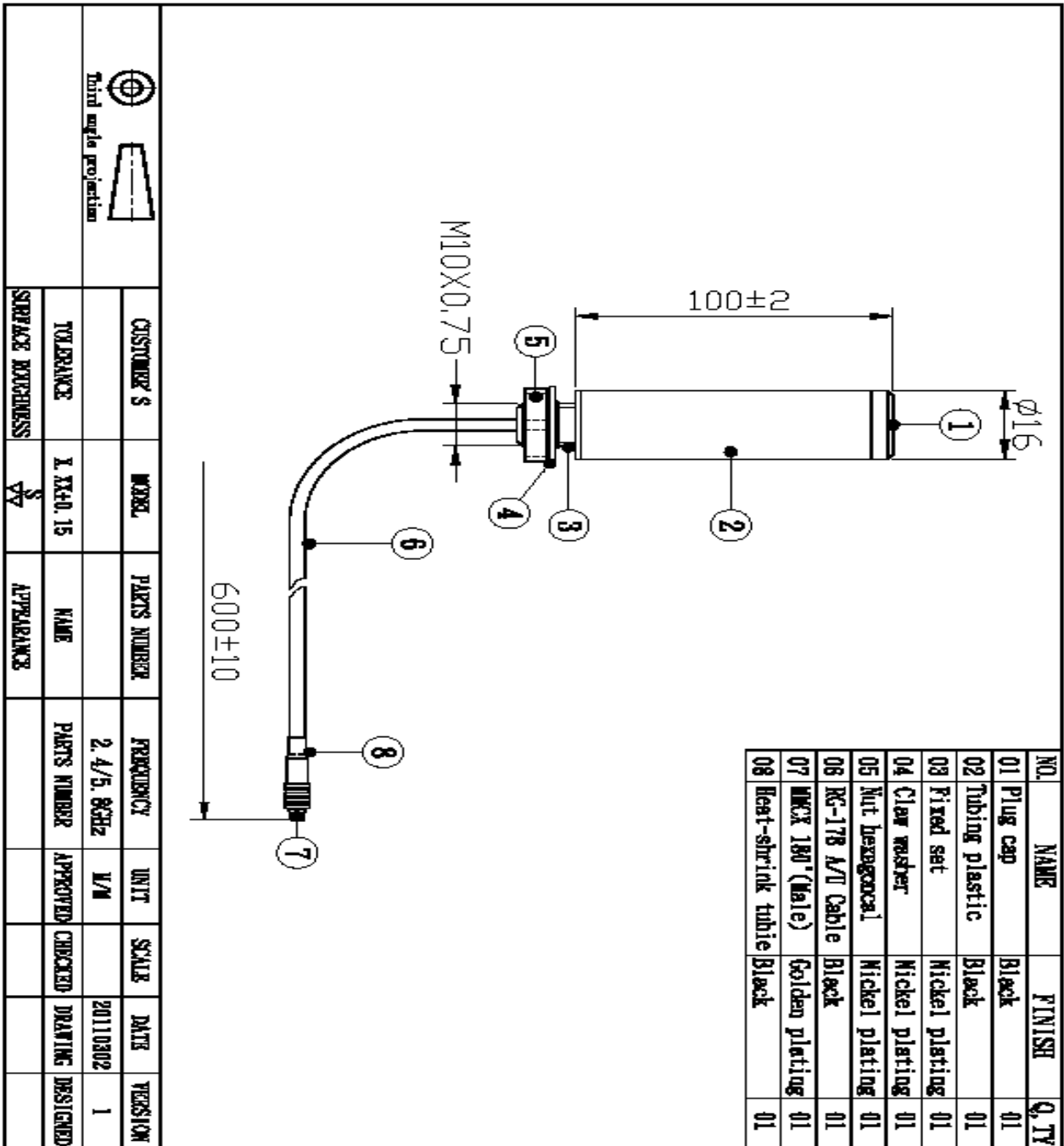
Parameter	Description
Frequency Band	2.4~2.5 & 5.0~5.9 GHz
Nominal Impedance	50 ohm
Polarization	Vertical
Return Loss	Please See Data-1
V.S.W.R	2.5 : 1
Gain	3db
Note: Gain includes the cable loss	

1.2 Mechanical Properties

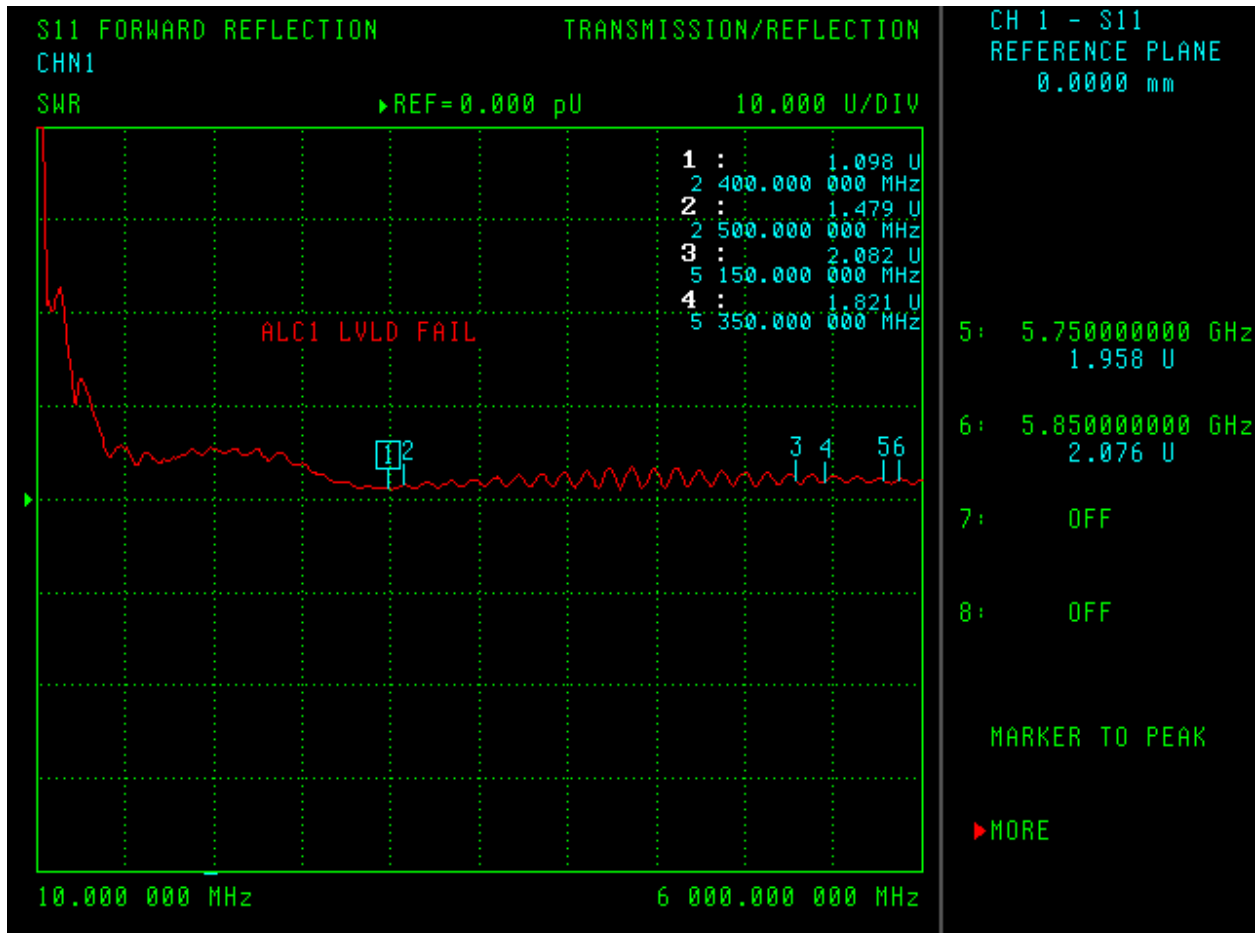
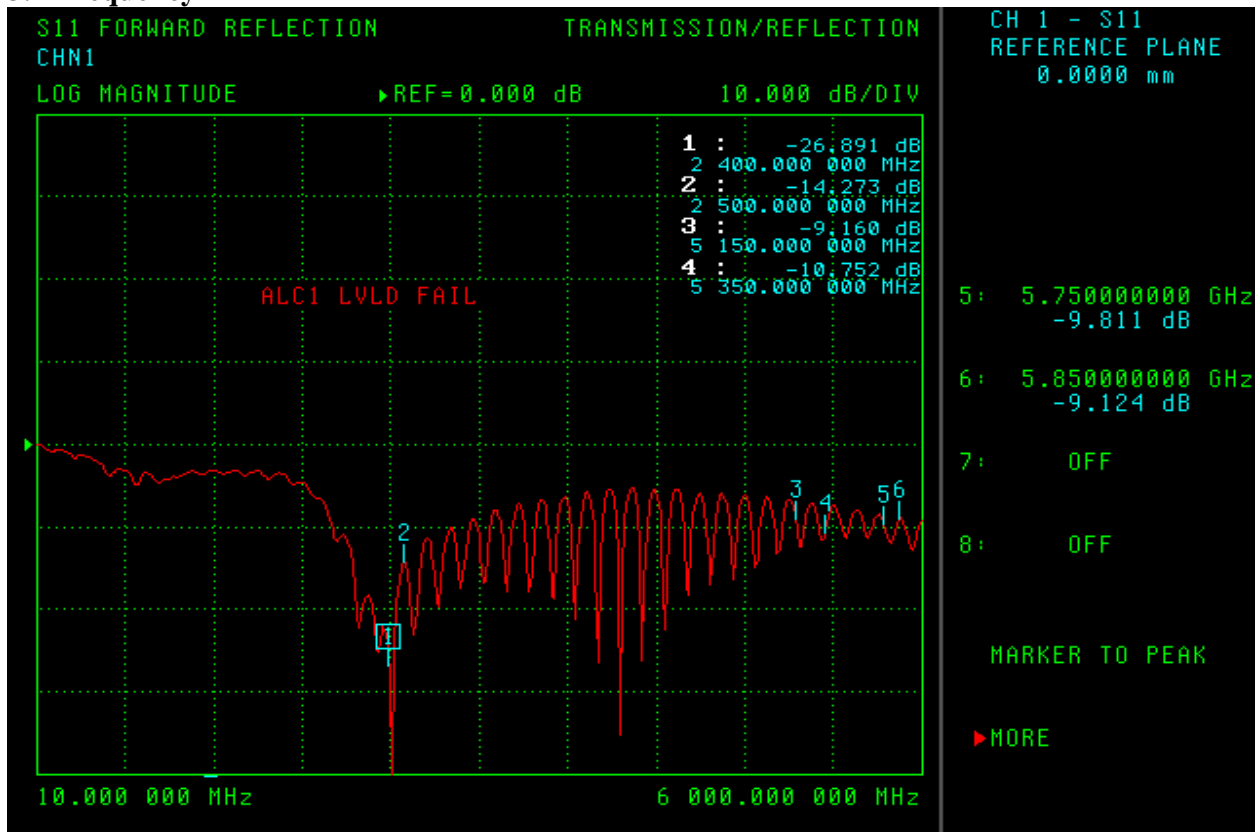
Parameter	Description
Antenna Type	External Antenna

Antenna Material	Tubing plastic
Touch Type	Screw Type M10 x0.75
Connector Type	MMCX 180° (Male) or --
Antenna Dimensions	Φ16x100mm ±2
Antenna Color	Black
Operating Temperature Range	-20°C~+60°C
Storage Temperature Range	-30°C~+70°C

2. Appearance



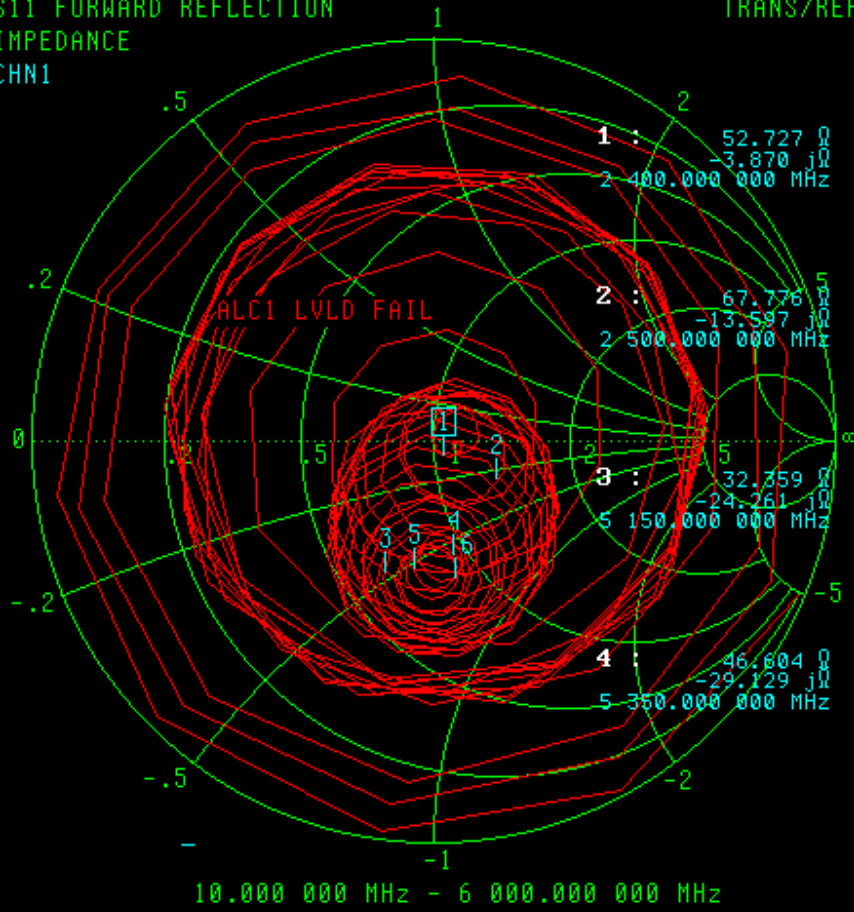
3. Frequency



S11 FORWARD REFLECTION
IMPEDANCE
CHN1

TRANS/REFL

CH 1 - S11
REFERENCE PLANE
0.0000 mm



5: 5.750000000 GHz
37.626 Ω
-26.954 jΩ

6: 5.850000000 GHz
43.612 Ω
-34.280 jΩ

7: OFF

8: OFF

MARKER TO PEAK

▶ MORE