

GSM ANTENNA

MODEL: TH-90-GSM-FAKRA-D

GSM850/GSM900/DCS1800/PCS1900/2170Mhz



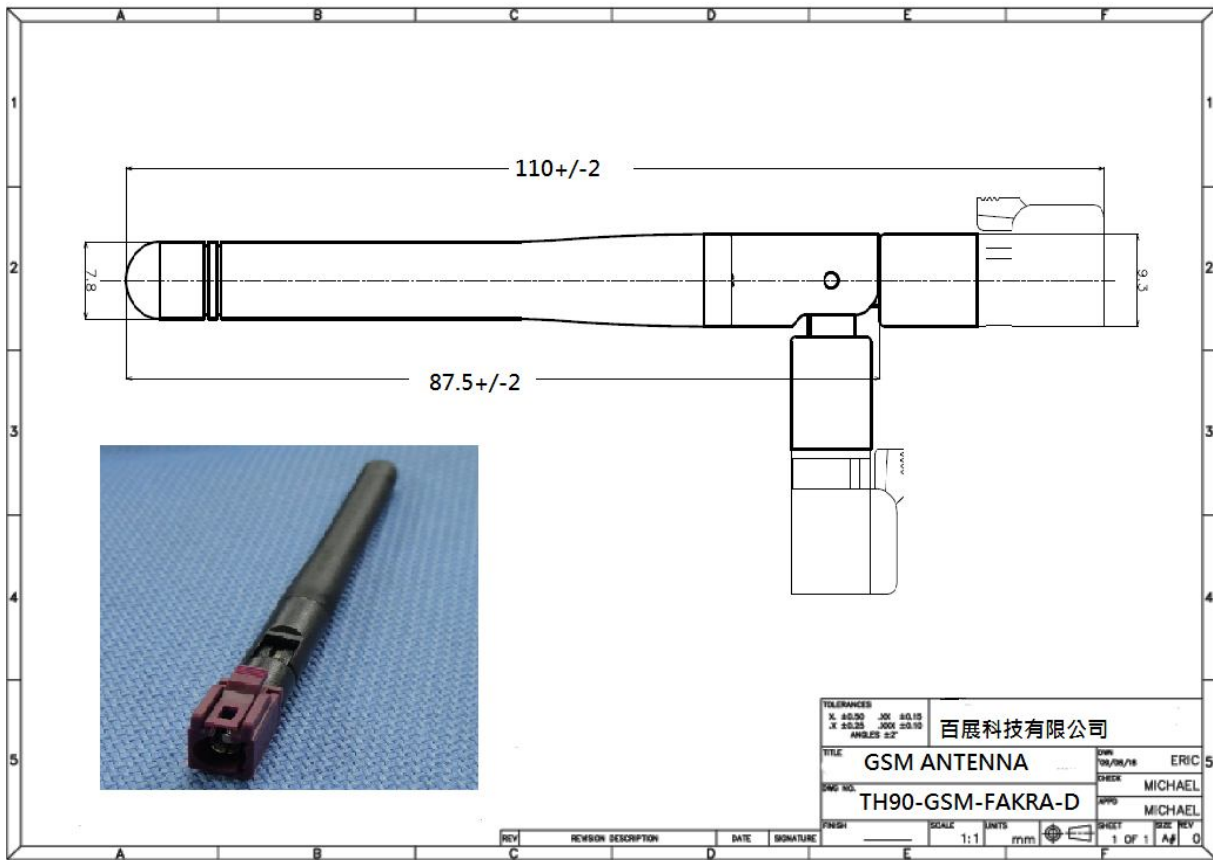
1.1 Electrical Properties

Parameter	Description
Frequency Band	850/900/1800/1900/2170 MHz
Nominal Impedance	50 ohm
Polarization	Vertical
Electrical Wave	Dipole
Return Loss	Please See Data-1
V.S.W.R	2.3:1
Antenna Average Gain	0~3dBi
Note: Gain includes the cable loss	

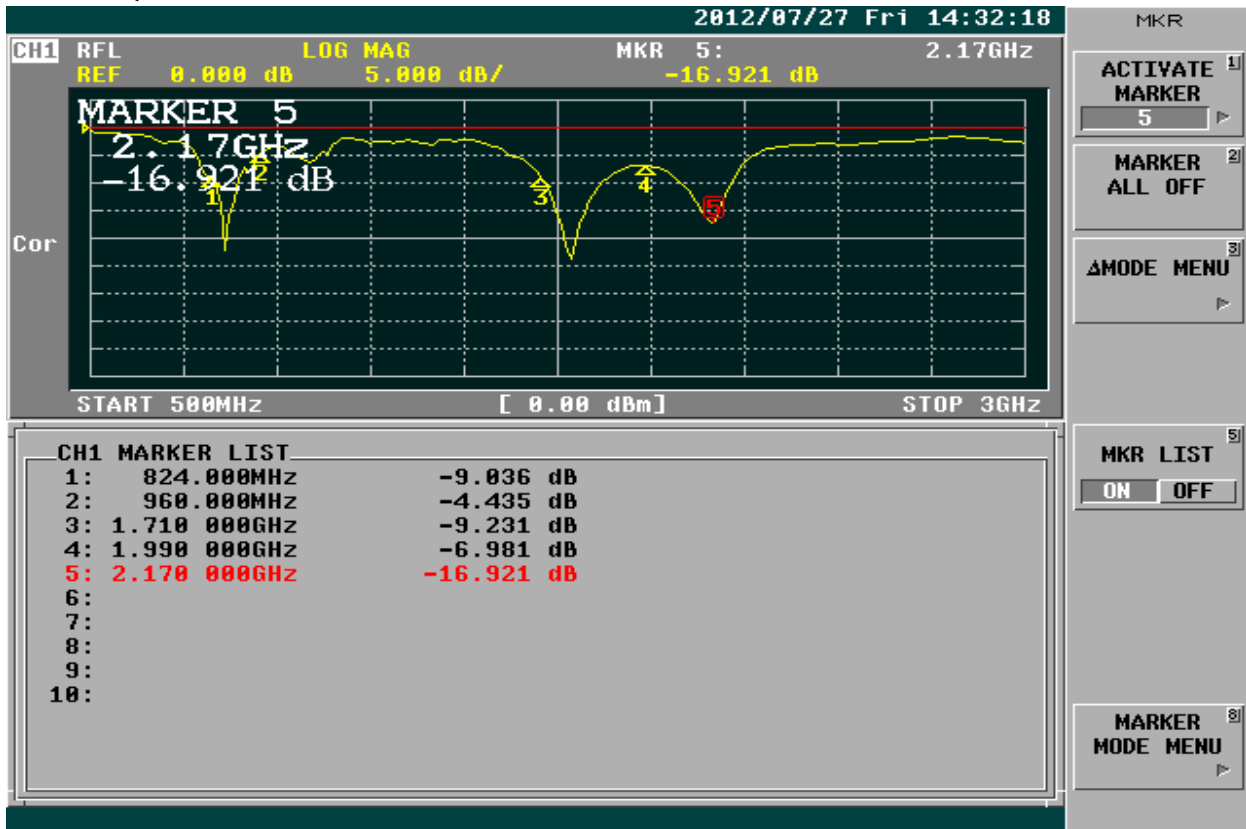
1.2 Mechanical Properties

Parameter	Description
Antenna Type	External Antenna
Antenna Cover	ABS
Touch Type	Screw Type
Connector Type	SMA 180°(Male)
Antenna Dimensions	104mm±2
Antenna Color	Black
Operating Temperature Range	-20°C~+60°C
Storage Temperature Range	-30°C~+70°C

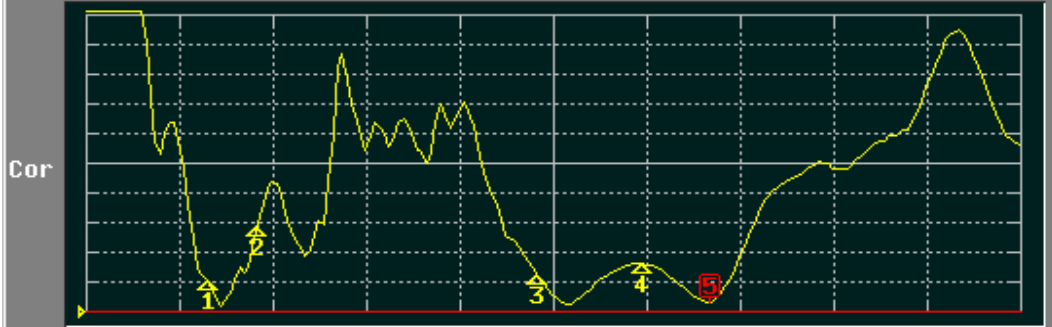
2. APPEARANCE



3. FREQUENCY



CH1 RFL SWR MKR 5: 2.17GHz
REF 1.000 1.000 / 1.328



CH1 MARKER LIST

1:	824.000MHz	2.075
2:	960.000MHz	3.902
3:	1.710 000GHz	2.261
4:	1.990 000GHz	2.584
5:	2.170 000GHz	1.332
6:		
7:		
8:		
9:		
10:		

FORMAT

- SWR ^[1]
- REAL ^[2]
- IMAG ^[3]
- PHASE ^[4]
-∞, +∞
- LOG MAG & ^[5]
PHASE
- LOG MAG & ^[6]
DELAY
- LIN MAG & ^[7]
PHASE
- More 2/2 ^[8]